

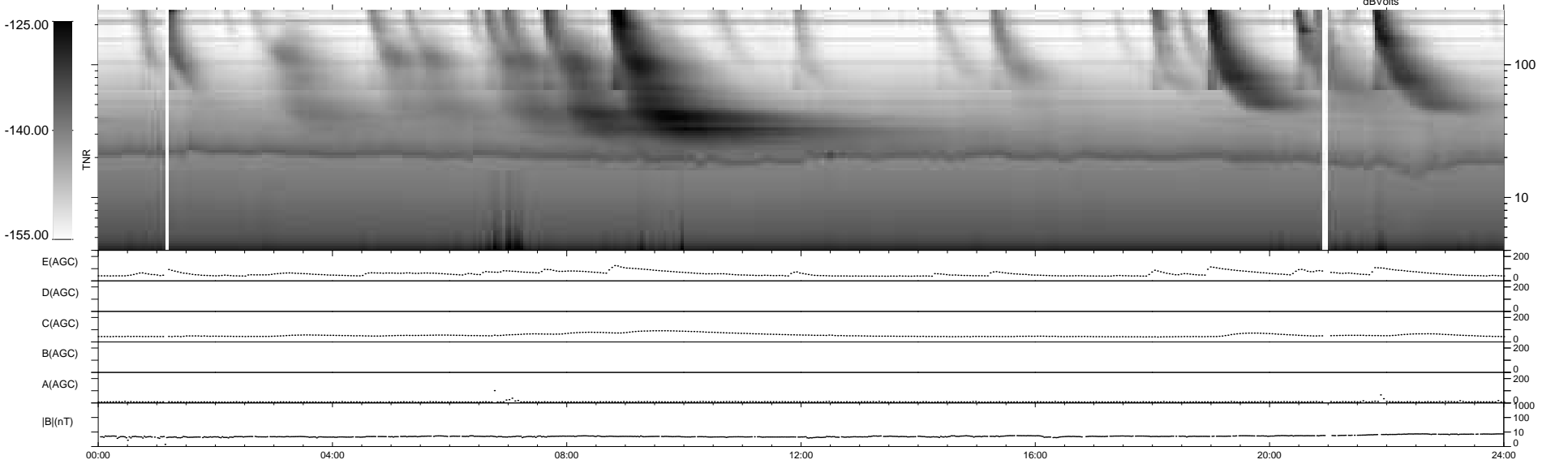
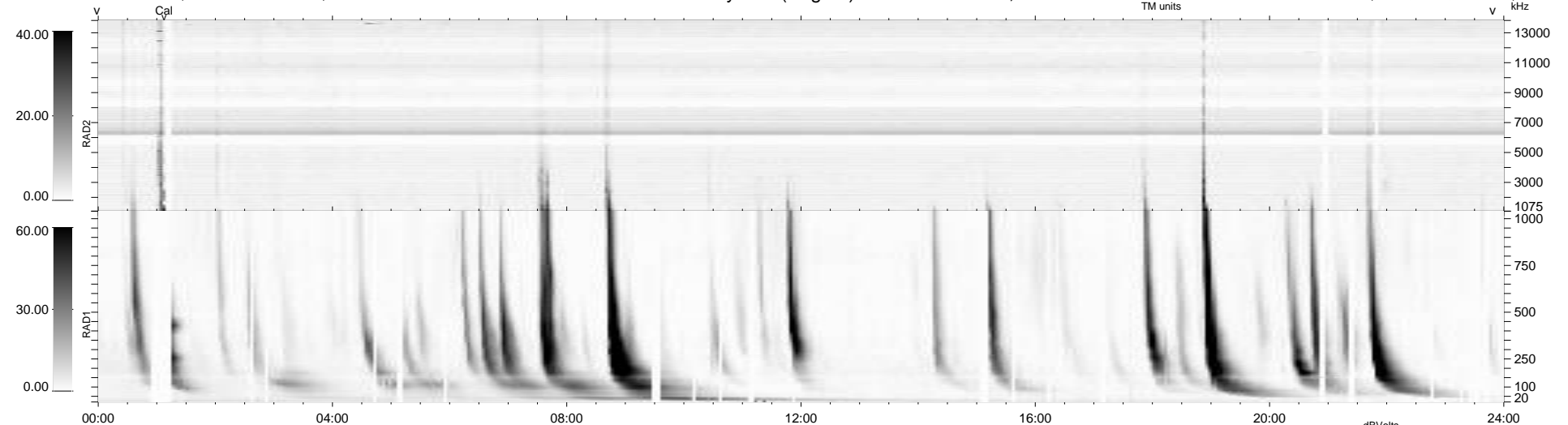
51 bad + 889 good MF/940MF projected (94%) - 0 missing MFs
 Avg interval = 180 secs
 Re = 256.22 (247.52, -63.05, 20.14 GSE)

windlib 2.0b

LZ version = v01

WIND/WAVES Summary Plot (Page 1) for 19-NOV-2012, DOY = 324

DAILY 2012-11-20 12:46:07
 Re = 255.70 (246.35, -65.58, 19.81 GSE)



```

RAD2
Antenna Ey .....
Mode LIN(1) .....
SUM/SEP SEP .....
Toggle OFF .....

RAD1
Antenna Ex .....
Mode LIS(2,4) .....
SUM/SEP SUM .....
Toggle OFF .....

TNR
Antenna ExEy .....
Mode A-32 .....
Sweep ACE .....
  
```