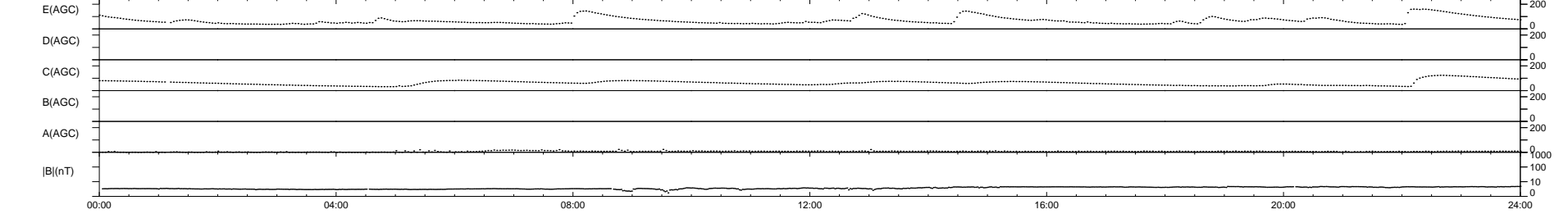
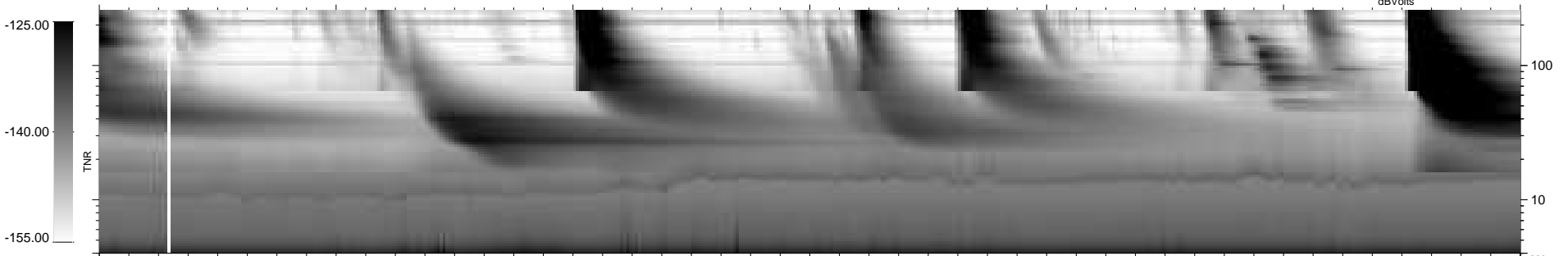
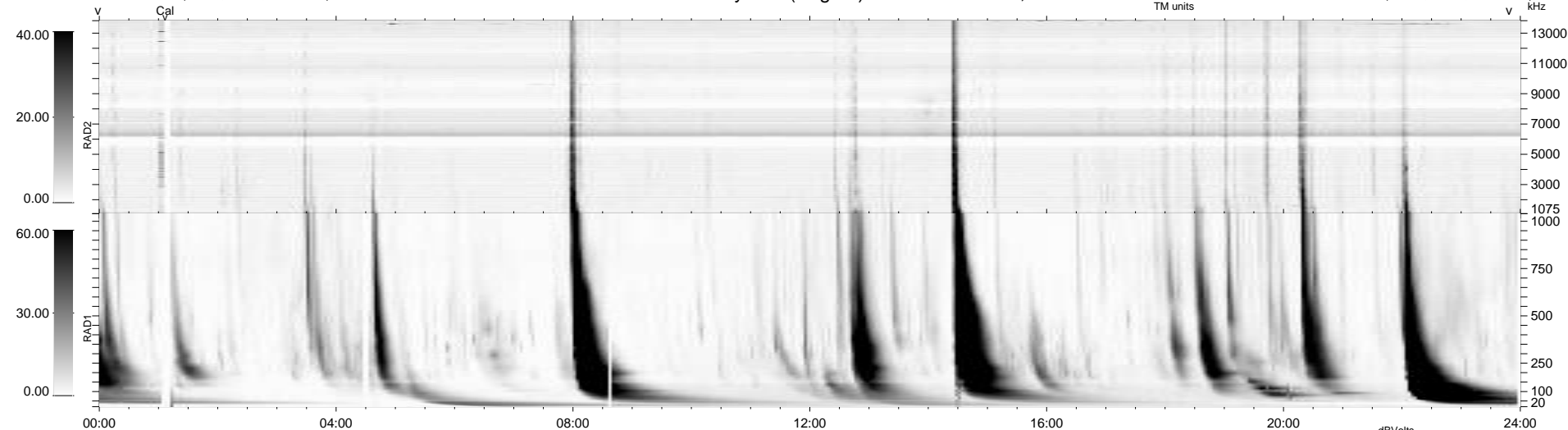


5 bad + 934 good MF/939MF projected (99%) - 0 missing MFs  
 Avg interval = 180 secs  
 Re = 257.96 (251.69, -52.40, 21.25 GSE)

windlib 2.0b LZ version = v01  
 DAILY 2012-11-16 18:16:08  
 Re = 257.60 (250.75, -55.12, 21.01 GSE)

### WIND/WAVES Summary Plot (Page 1) for 15-NOV-2012, DOY = 320



RAD2  
 Antenna Ey .....  
 Mode LIN(1) .....  
 SUM/SEP SEP .....  
 Toggle OFF .....  
 RAD1  
 Antenna Ex .....  
 Mode LIS(2,4) .....  
 SUM/SEP SUM .....  
 Toggle OFF .....  
 TNR  
 Antenna ExEy .....  
 Mode A-32 .....  
 Sweep ACE .....