

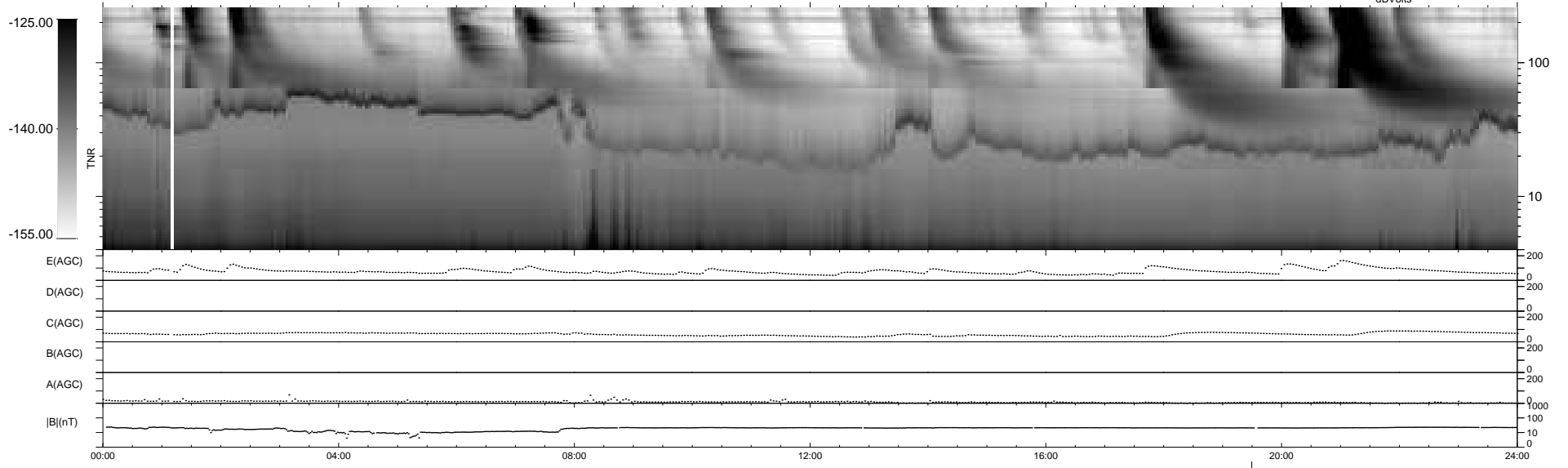
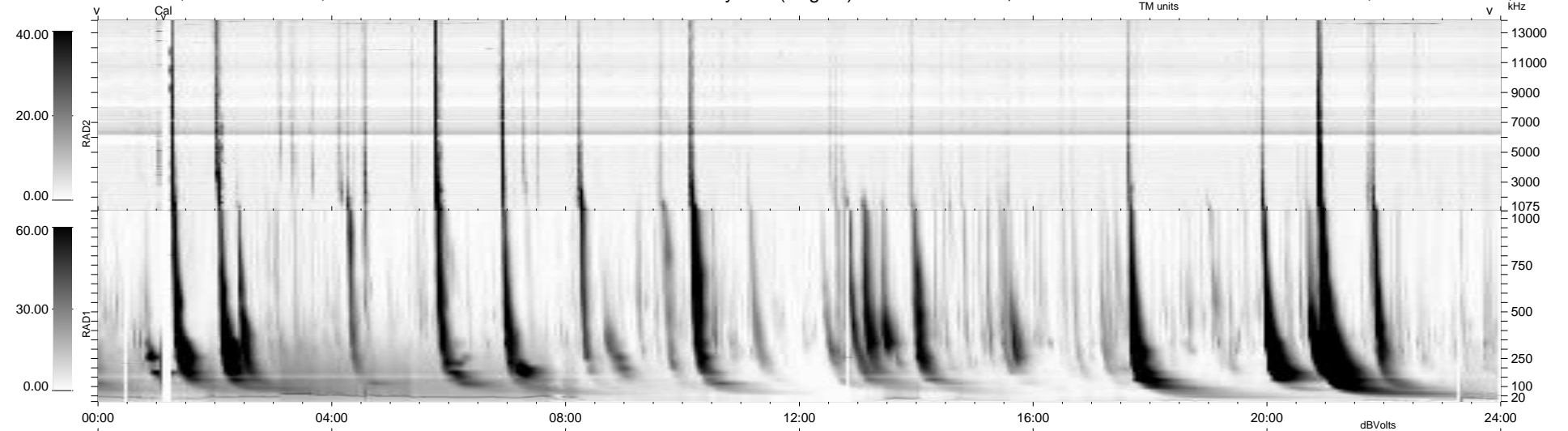
7 bad + 931 good MF/939MF projected (99%) - 1 missing MF
 Avg interval = 180 secs
 Re = - 258.53 (253.34, -46.77, 21.67 GSE)

windlib 2.0b

LZ version = v02

WIND/WAVES Summary Plot (Page 1) for 13-NOV-2012, DOY = 318

DAILY 2012-11-16 13:16:09
 Re = 258.28 (252.56, -49.59, 21.47 GSE)



RAD2
 Antenna Ey
 Mode LIN(1)
 SUM/SEP SEP
 Toggle OFF
 RAD1
 Antenna Ex
 Mode LIS(2/4)
 SUM/SEP SUM
 Toggle OFF
 TNR
 Antenna ExEy
 Mode A-32
 Sweep ACE