

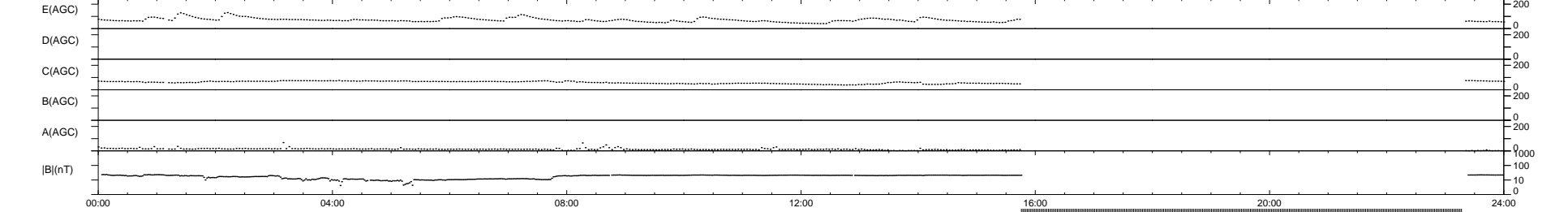
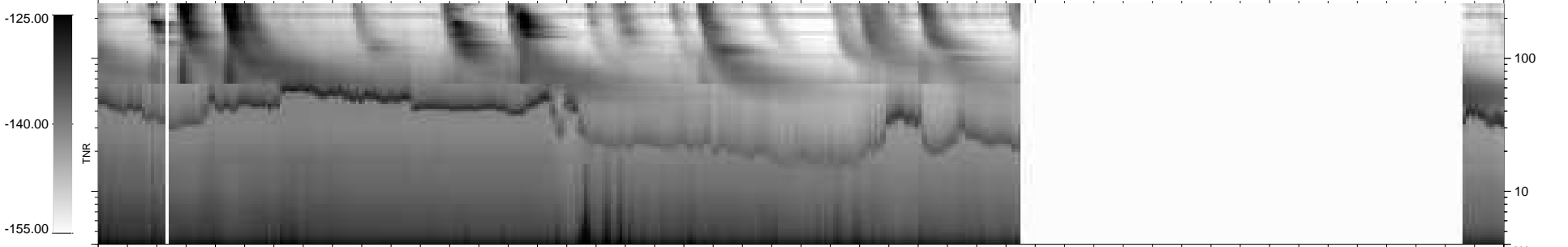
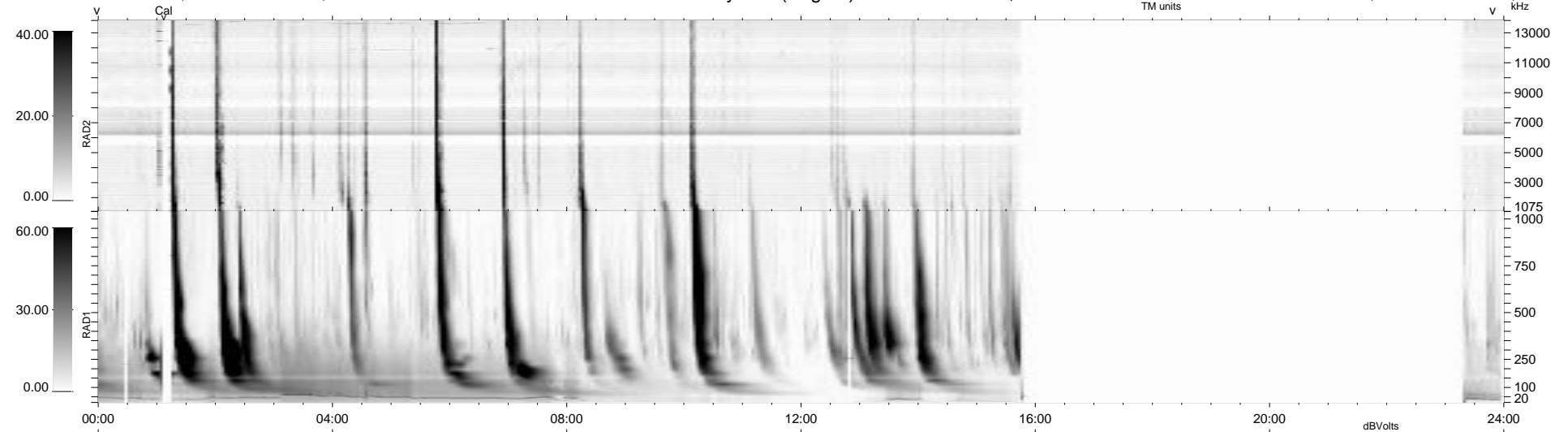
6 bad + 638 good MF/939MF projected (67%) - 295 missing MFs  
 Avg interval = 180 secs  
 Re = - 258.53 (253.34, -46.77, 21.67 GSE)

windlib 2.0b

LZ version = v01

### WIND/WAVES Summary Plot (Page 1) for 13-NOV-2012, DOY = 318

DAILY 2012-11-15 02:16:06  
 Re = 258.28 (252.56, -49.59, 21.47 GSE)



```

RAD2
Antenna Ey .....
Mode LIN(1) .....
SUM/SEP SEP .....
Toggle OFF .....

RAD1
Antenna Ex .....
Mode LIS(2,4) .....
SUM/SEP SUM .....
Toggle OFF .....

TNR
Antenna ExEy .....
Mode A-32 .....
Sweep ACE .....
  
```