

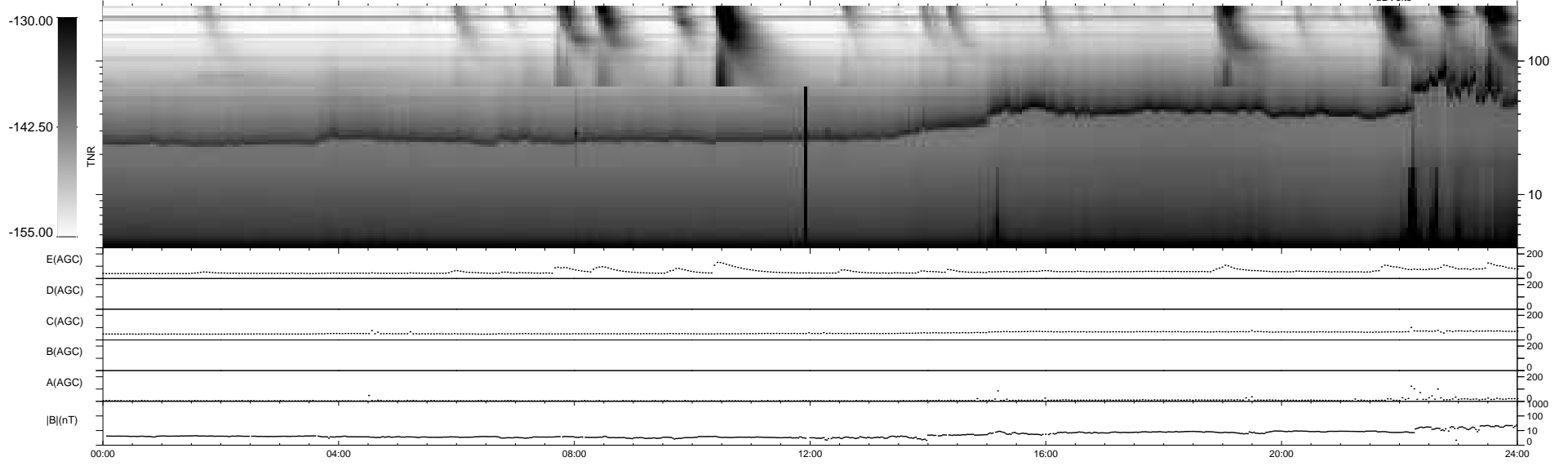
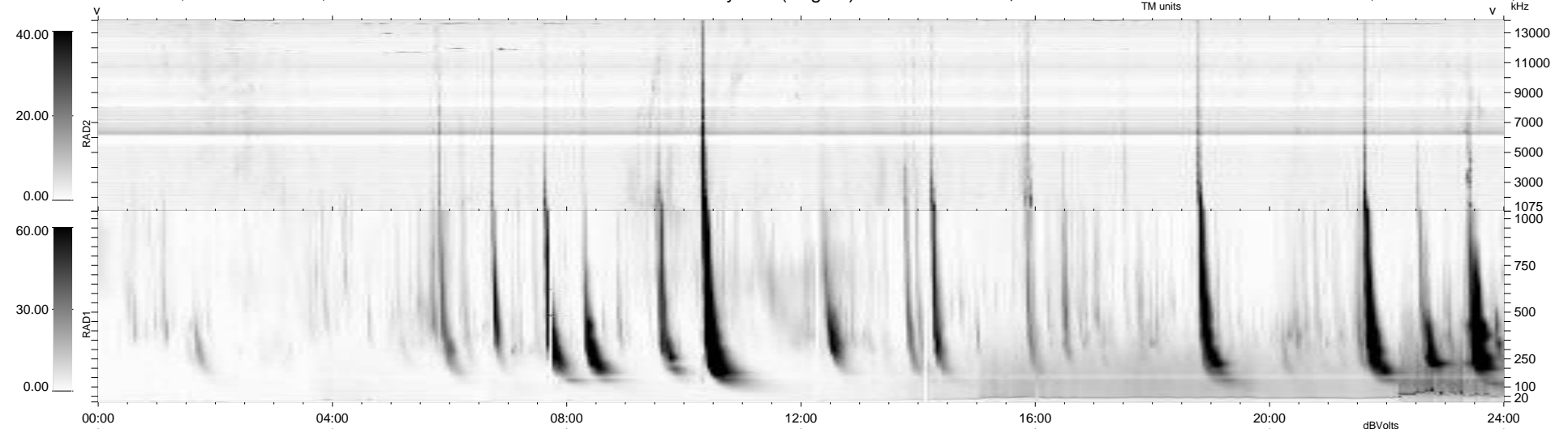
14 bad + 925 good MF/939MF projected (98%) - 0 missing MFs  
 Avg interval = 180 secs  
 Re = -258.72 (254.04, -43.85, 21.85 GSE)

windlib 2.0b

LZ version = v02

### WIND/WAVES Summary Plot (Page 1) for 12-NOV-2012, DOY = 317

DAILY 2012-11-15 12:16:08  
 Re = 258.53 (253.34, -46.75, 21.67 GSE)



RAD2 Antenna Ey .....  
 Mode LIN(1) .....  
 SUM/SEP SEP .....  
 Toggle OFF .....  
 RAD1 Antenna Ex .....  
 Mode LIS(2,4) .....  
 SUM/SEP SUM .....  
 Toggle OFF .....  
 TNR Antenna ExEy .....  
 Mode A-32 .....  
 Sweep ACE .....