

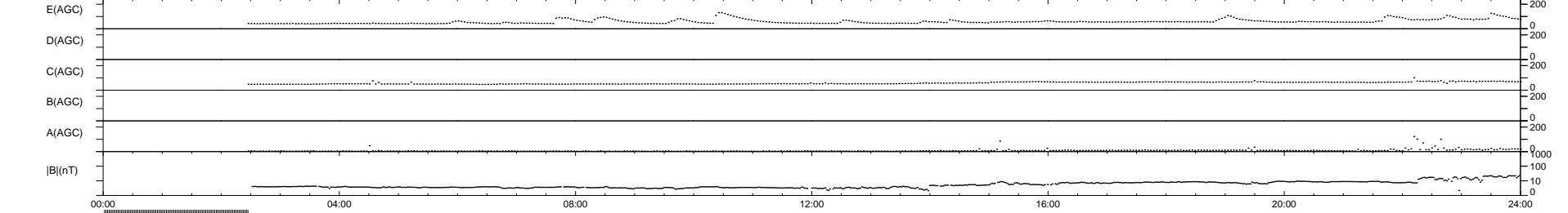
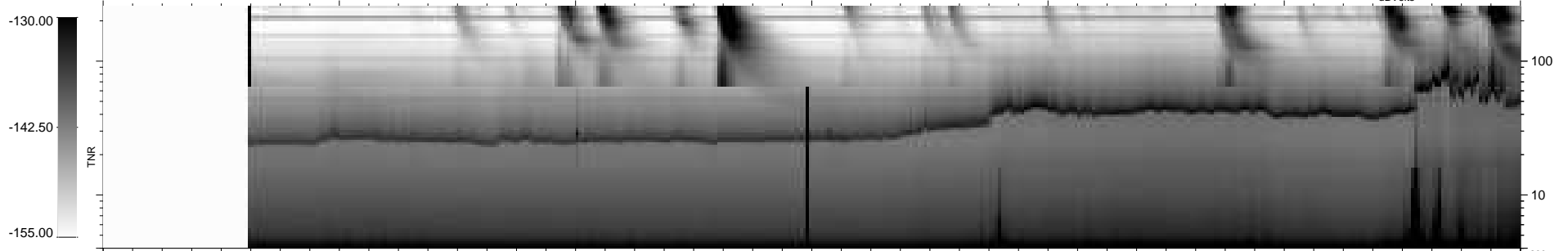
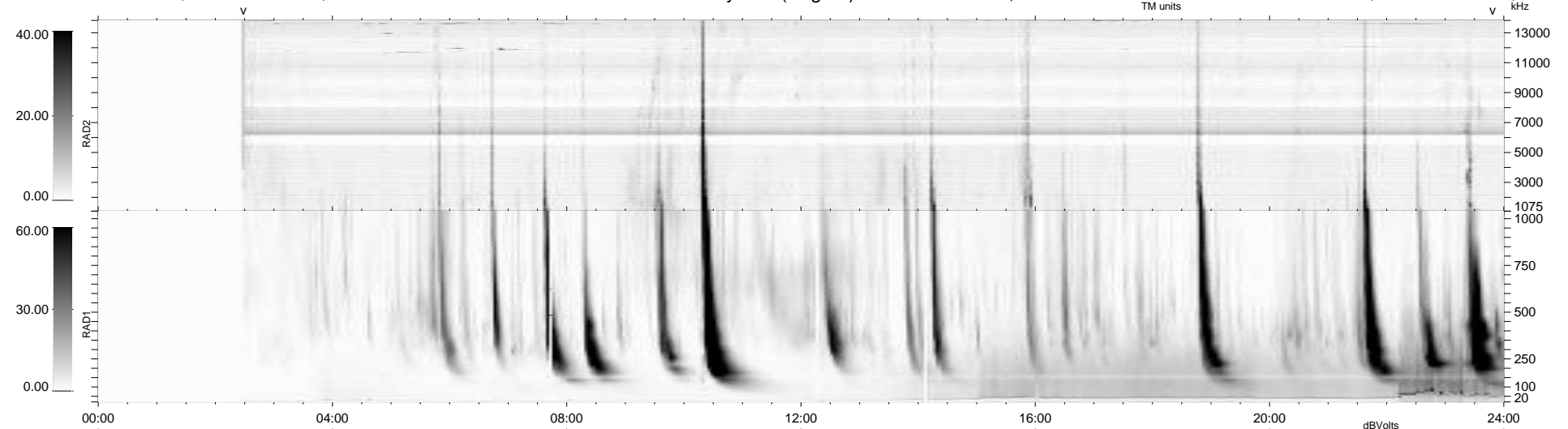
14 bad + 829 good MF/939MF projected (88%) - 96 missing MFs
Avg interval = 180 secs
Re = -258.71 (253.97, -44.16, 21.83 GSE)

windlib 2.0b

LZ version = v01

WIND/WAVES Summary Plot (Page 1) for 12-NOV-2012, DOY = 317

DAILY 2012-11-13 16:16:07
Re = 258.53 (253.34, -46.75, 21.67 GSE)



RAD2 Antenna Mode SUM/SEP Toggle
RAD1 Antenna Mode SUM/SEP Toggle
TNR Antenna Mode Sweep