

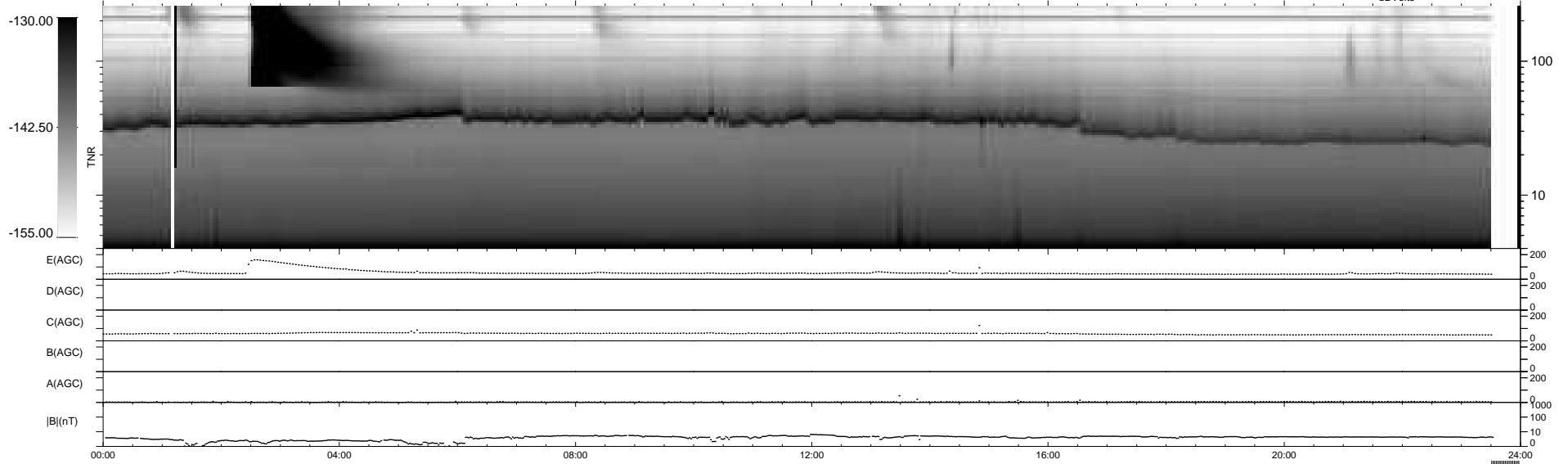
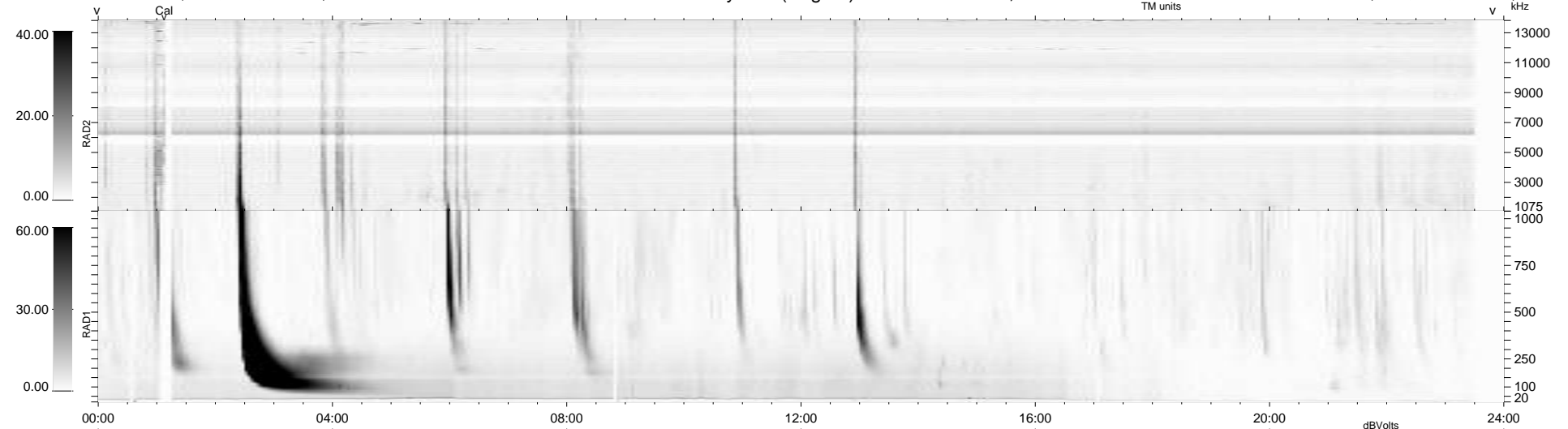
6 bad + 914 good MF/939MF projected (97%) - 19 missing MFs
 Avg interval = 180 secs
 Re = 258.87 (254.67, -40.87, 22.01 GSE)

windlib 2.0b

LZ version = v01

WIND/WAVES Summary Plot (Page 1) for 11-NOV-2012, DOY = 316

DAILY 2012-11-13 02:16:07
 Re = 258.73 (254.05, -43.83, 21.85 GSE)



RAD2
 Antenna Ey
 Mode LIN(1)
 SUM/SEP SEP
 Toggle OFF
 RAD1
 Antenna Ex
 Mode LIS(2,4)
 SUM/SEP SUM
 Toggle OFF
 TNR
 Antenna ExEy
 Mode A-32
 Sweep ACE