

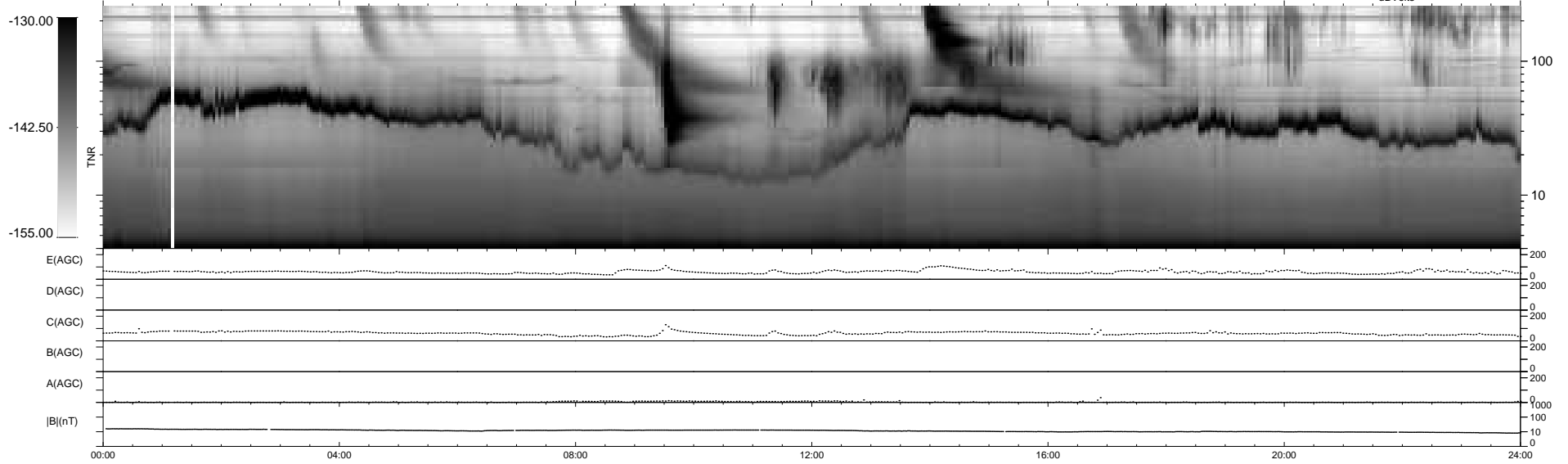
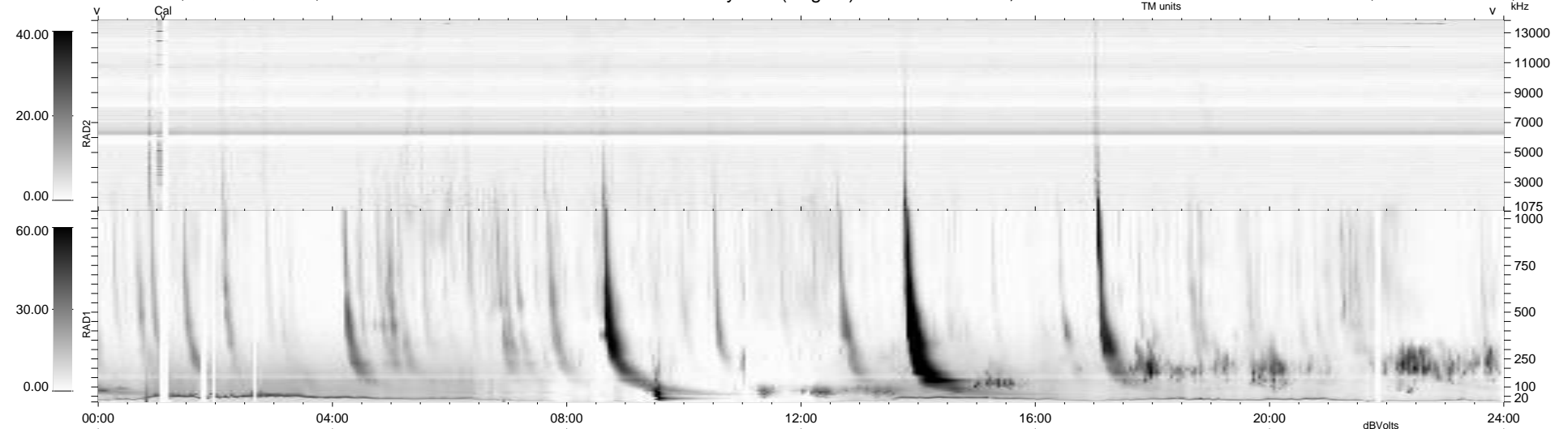
14 bad + 925 good MF/939MF projected (98%) - 0 missing MFs
 Avg interval = 180 secs
 Re = -258.92 (257.83, -7.42, 22.55 GSE)

windlib 2.0b

LZ version = v01

WIND/WAVES Summary Plot (Page 1) for 01-NOV-2012, DOY = 306

DAILY 2012-11-02 22:16:11
 Re = 258.92 (257.70, -10.96, 22.58 GSE)



```

RAD2
Antenna Ey .....
Mode LIN(1) .....
SUM/SEP SEP .....
Toggle OFF .....

RAD1
Antenna Ex .....
Mode LIS(2,4) .....
SUM/SEP SUM .....
Toggle OFF .....

TNR
Antenna ExEy .....
Mode A-32 .....
Sweep ACE .....
  
```