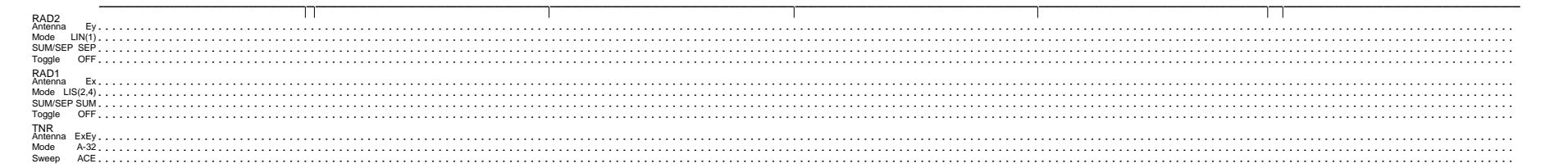
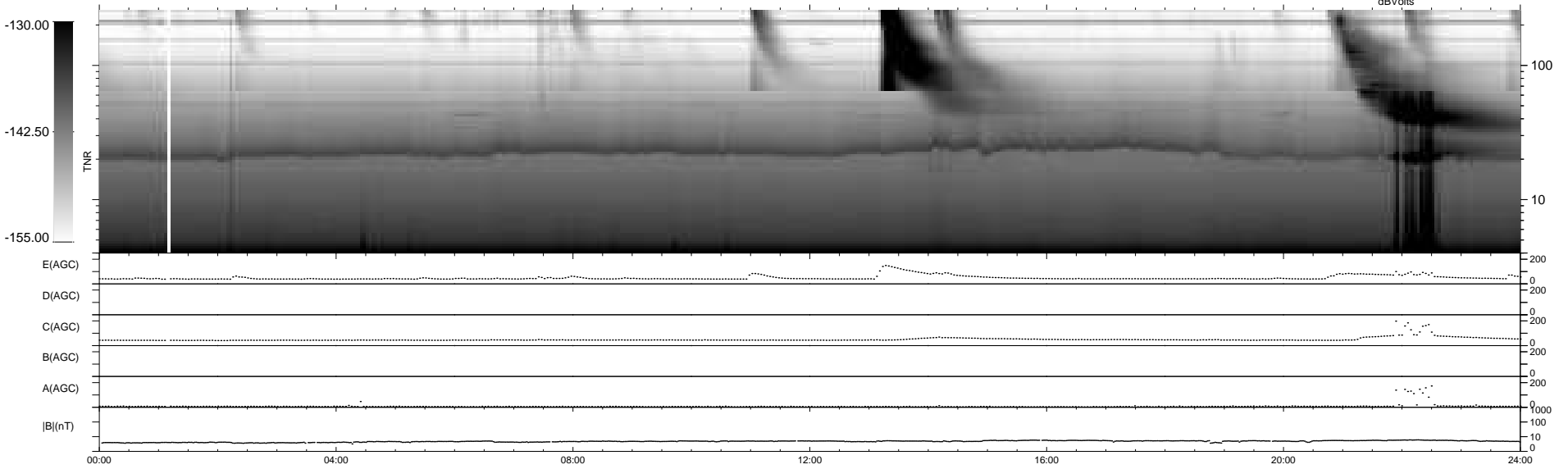
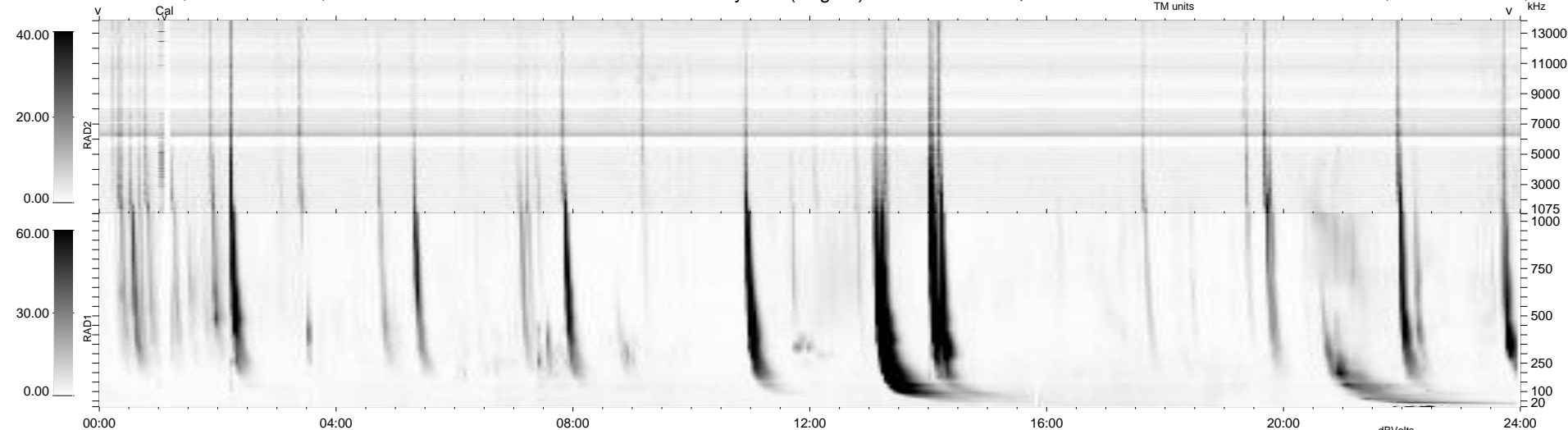


7 bad + 932 good MF/939MF projected (99%) - 0 missing MFs
 Avg interval = 180 secs
 Re = 259.41 (258.10, 14.06, 21.86 GSE)

windlib 2.0b LZ version = v01
 DAILY 2012-11-19 11:46:06
 Re = 259.27 (258.12, 10.54, 22.03 GSE)

WIND/WAVES Summary Plot (Page 1) for 26-OCT-2012, DOY = 300



```

RAD2
Antenna Ey .....
Mode LIN(1) .....
SUM/SEP SEP .....
Toggle OFF .....

RAD1
Antenna Ex .....
Mode LIS(2,4) .....
SUM/SEP SUM .....
Toggle OFF .....

TNR
Antenna ExEy .....
Mode A-32 .....
Sweep ACE .....
  
```