

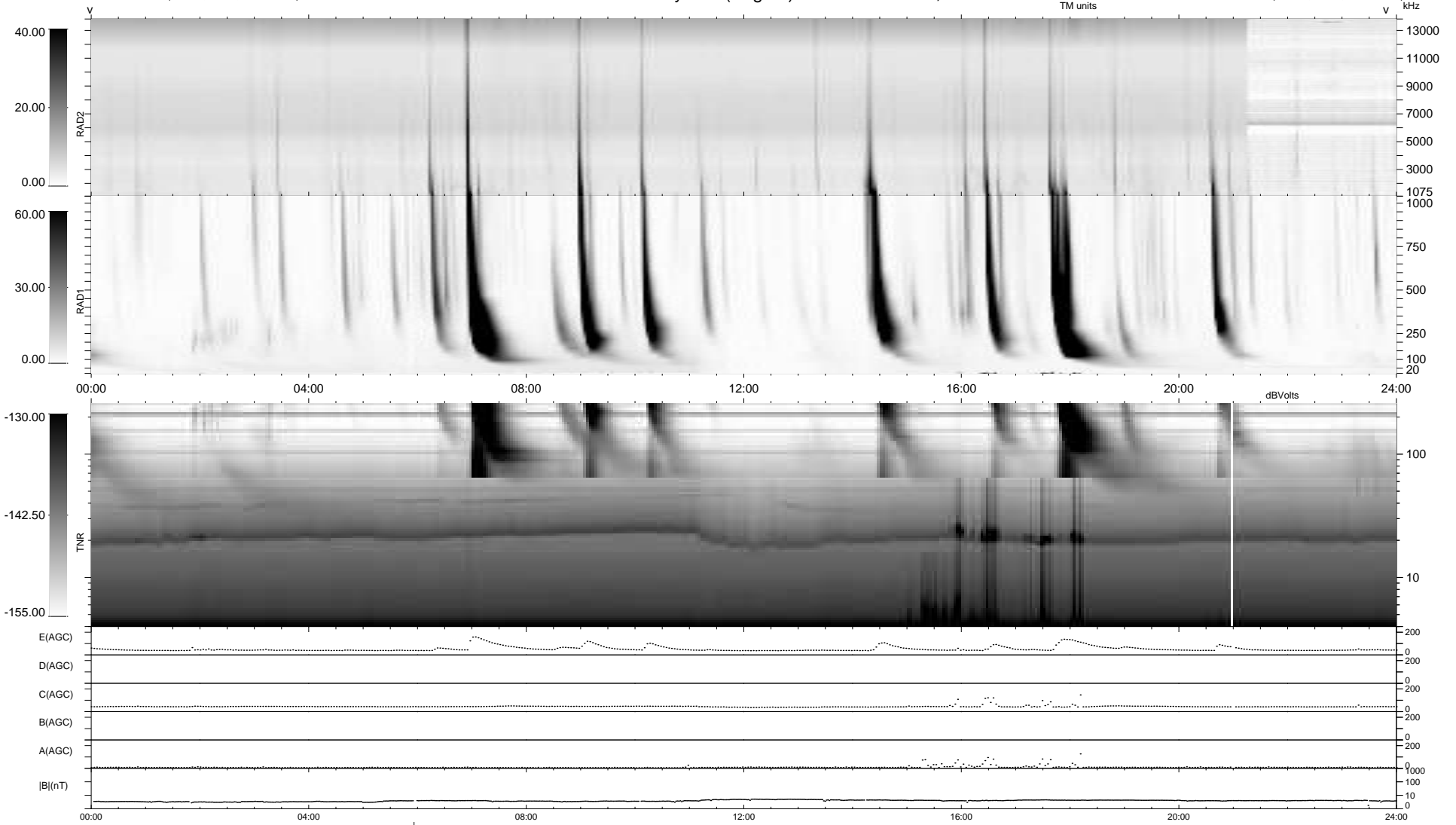
5 bad + 933 good MF/939MF projected (99%) - 1 missing MF
 Avg interval = 180 secs
 Re = 259.55 (258.05, 17.56, 21.66 GSE)

windlib 2.0b

LZ version = v01

WIND/WAVES Summary Plot (Page 1) for 25-OCT-2012, DOY = 299

DAILY 2012-10-27 02:16:07
 Re = 259.41 (258.10, 14.08, 21.86 GSE)



```

RAD2
Antenna  Ey .....
Mode LIS(0,0) .....
SUM/SEP SUM .....
Toggle OFF .....
RAD1
Antenna  Ex .....
Mode LIS(0,0) .....
SUM/SEP SUM .....
Toggle OFF .....
TNR
Antenna  ExEy .....
Mode A-32 .....
Sweep ACE .....
  
```