

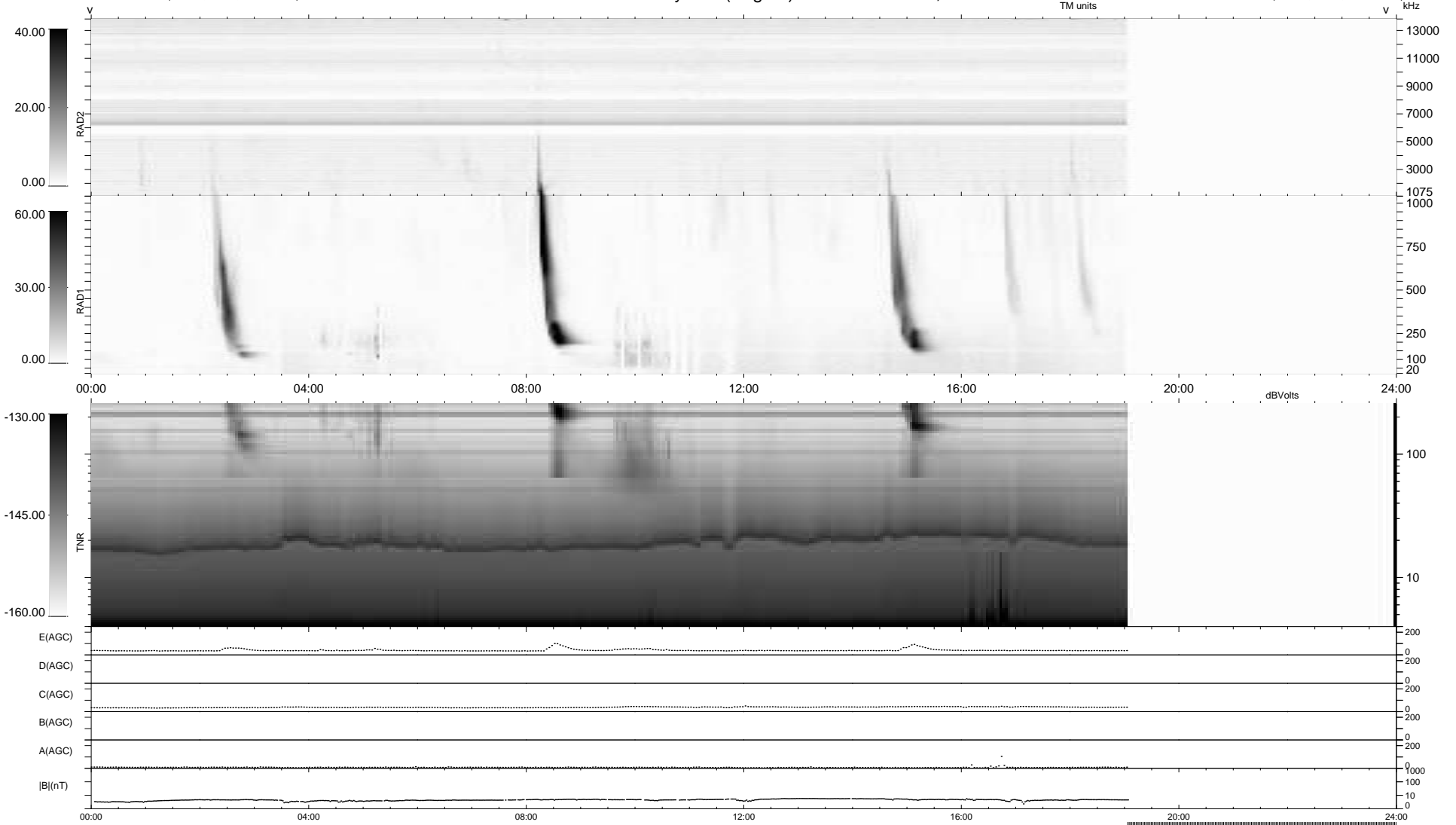
18 bad + 727 good MF/939MF projected (77%) - 194 missing MFs
 Avg interval = 180 secs
 Re = 260.13 (257.45, 31.04, 20.63 GSE)

windlib 2.0b

LZ version = v02

WIND/WAVES Summary Plot (Page 1) for 21-OCT-2012, DOY = 295

DAILY 2012-10-24 13:17:05
 Re = 260.01 (257.67, 27.79, 20.92 GSE)



RAD2
 Antenna Ey
 Mode LIN(1)
 SUM/SEP SEP
 Toggle OFF
 RAD1
 Antenna Ex
 Mode LIS(2,4)
 SUM/SEP SUM
 Toggle OFF
 TNR
 Antenna ExEy
 Mode A-32
 Sweep ACE