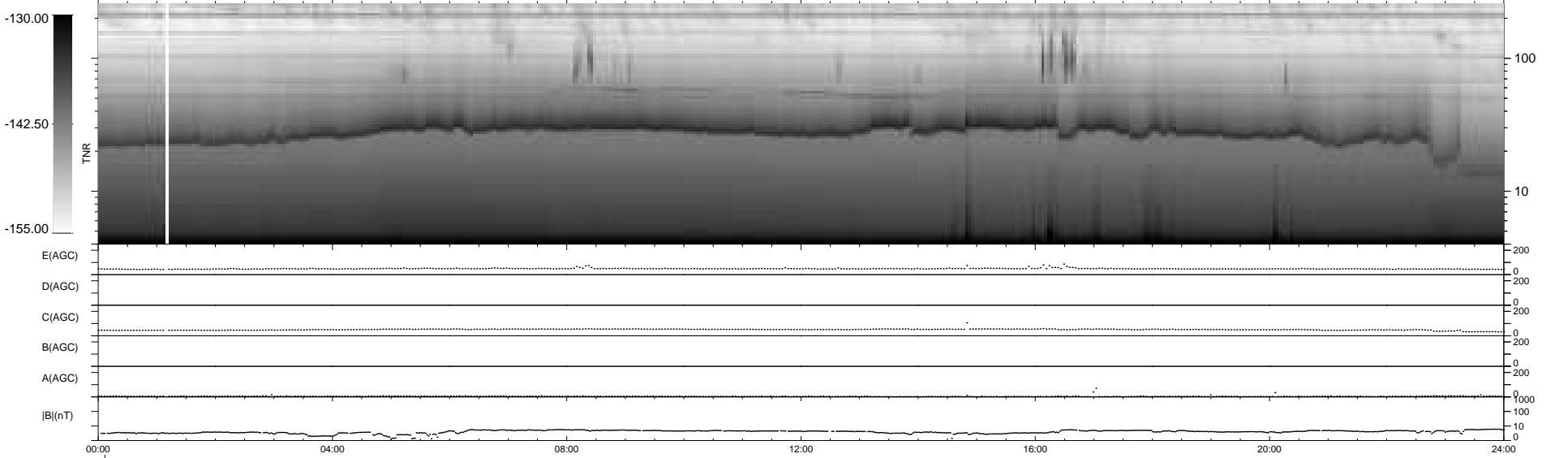
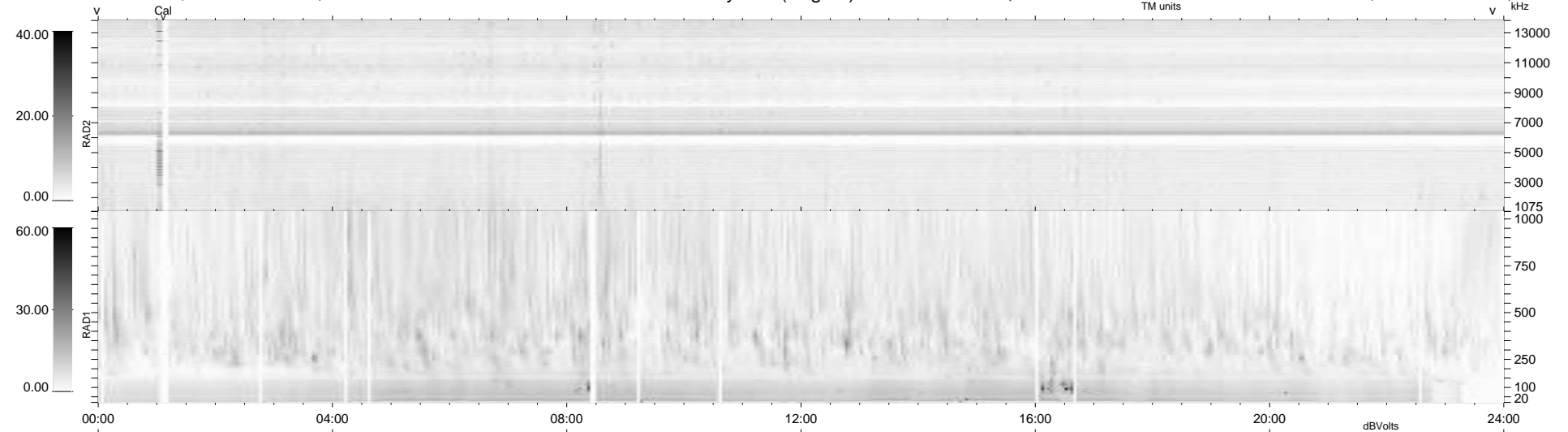


19 bad + 919 good MF/939MF projected (97%) - 1 missing MF  
 Avg interval = 180 secs  
 Re = 260.20 (255.34, 46.33, 18.84 GSE)

windlib 2.0b LZ version = v01  
 DAILY 2012-10-18 03:16:07  
 Re = 260.28 (255.91, 43.43, 19.23 GSE)

WIND/WAVES Summary Plot (Page 1) for 16-OCT-2012, DOY = 290



RAD2  
 Antenna Ey .....  
 Mode LIN(1) .....  
 SUM/SEP SEP .....  
 Toggle OFF .....  
 RAD1  
 Antenna Ex .....  
 Mode LIS(2,4) .....  
 SUM/SEP SUM .....  
 Toggle OFF .....  
 TNR  
 Antenna ExEy .....  
 Mode A-32 .....  
 Sweep ACE .....