

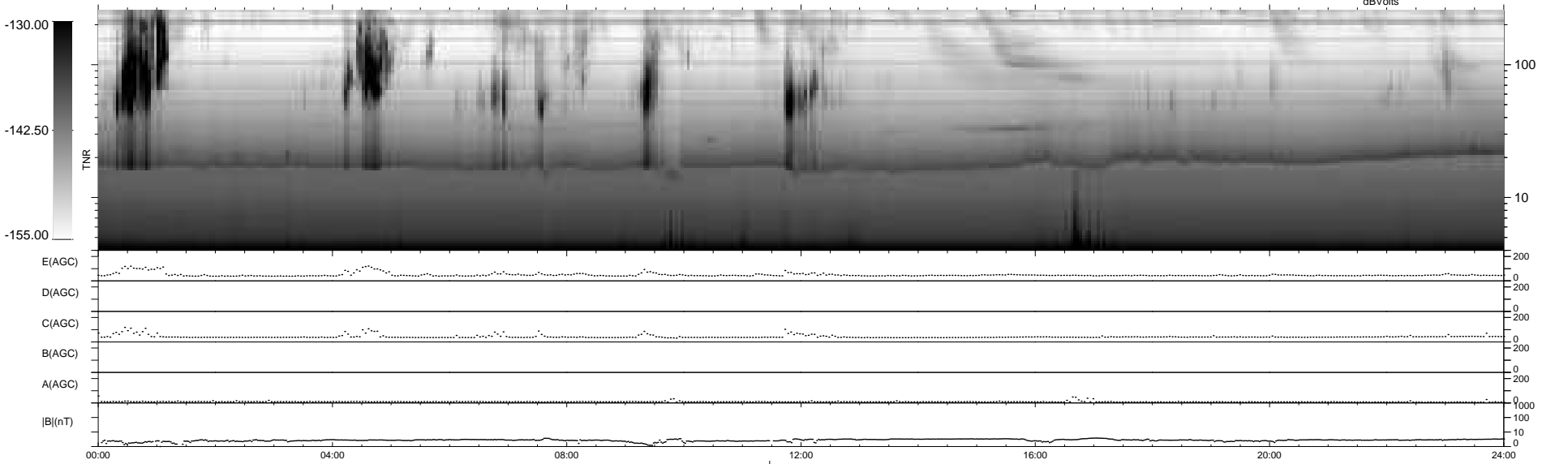
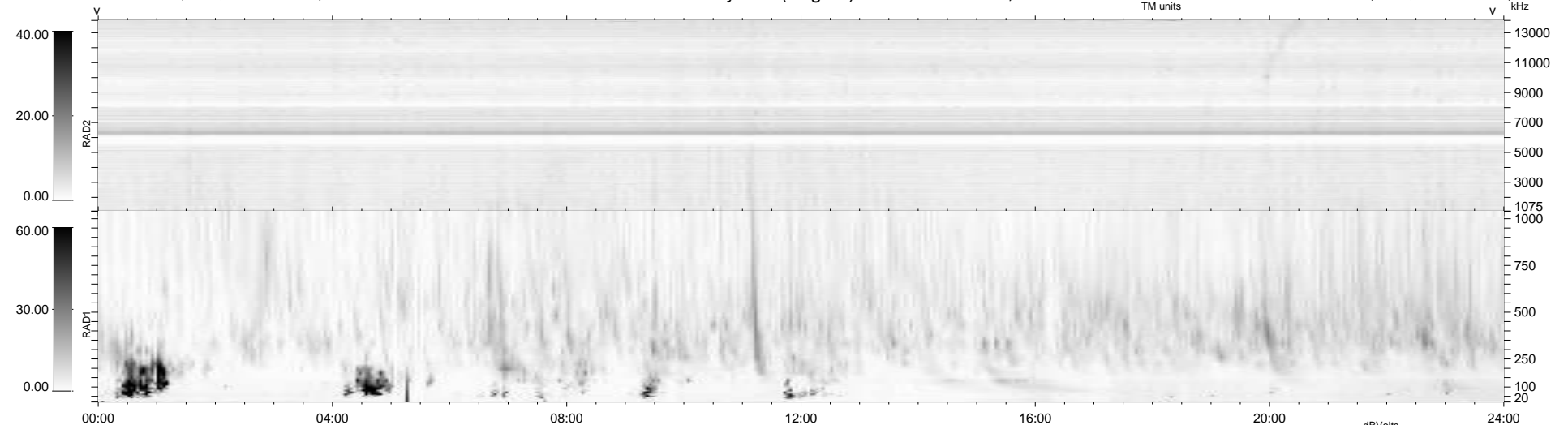
10 bad + 928 good MF/939MF projected (98%) - 1 missing MF
 Avg interval = 180 secs
 Re = 260.05 (254.69, 49.20, 18.43 GSE)

windlib 2.0b

LZ version = v02

WIND/WAVES Summary Plot (Page 1) for 15-OCT-2012, DOY = 289

DAILY 2012-10-18 13:16:08
 Re = 260.20 (255.34, 46.35, 18.84 GSE)



RAD2
 Antenna Ey
 Mode LIN(1)
 SUM/SEP SEP
 Toggle OFF

RAD1
 Antenna Ex
 Mode LIS(2,4)
 SUM/SEP SUM
 Toggle OFF

TNR
 Antenna ExEy
 Mode A-32
 Sweep ACE