

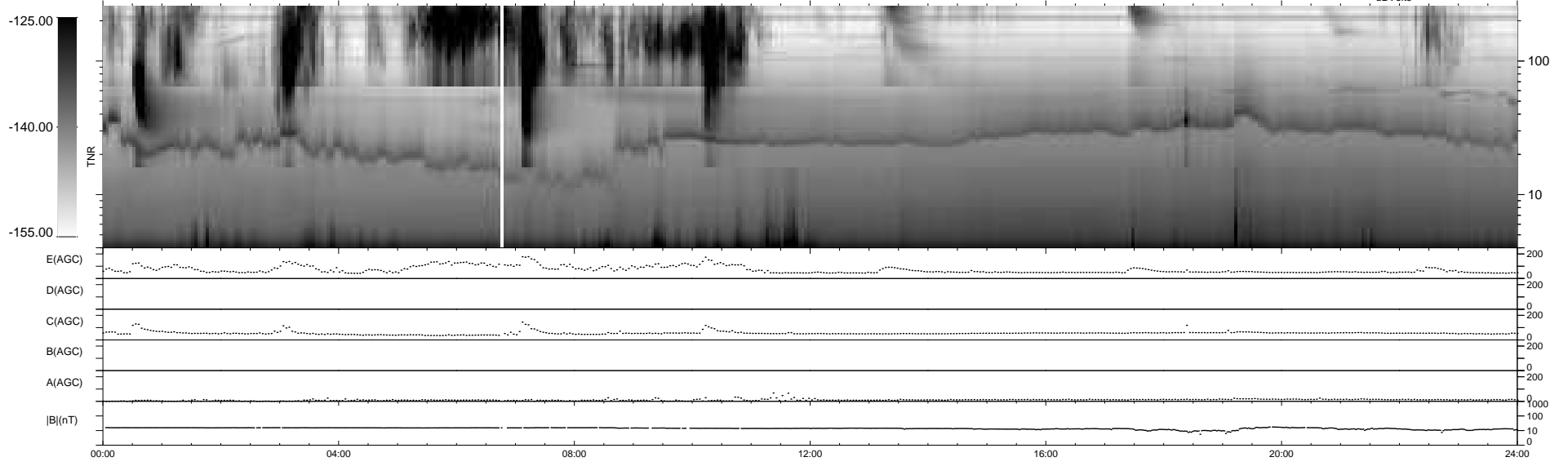
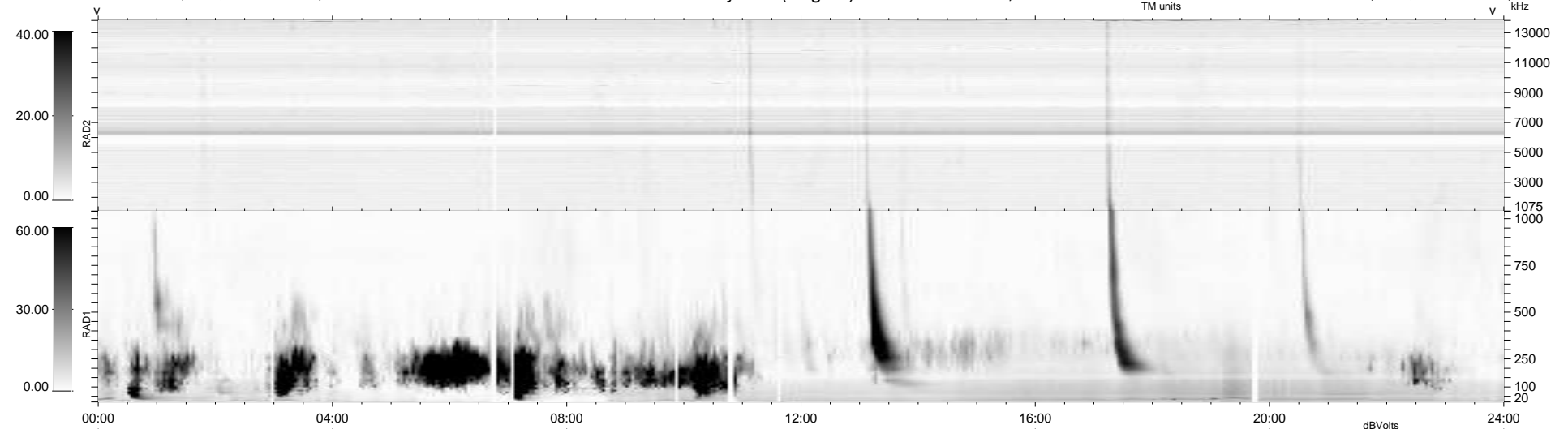
23 bad + 916 good MF/939MF projected (97%) - 0 missing MFs
 Avg interval = 180 secs
 Re = - 258.21 (249.32, 65.33, 15.65 GSE)

windlib 2.0b

LZ version = v02

WIND/WAVES Summary Plot (Page 1) for 09-OCT-2012, DOY = 283

DAILY 2012-10-12 13:16:08
 Re = 258.60 (250.34, 62.77, 16.14 GSE)



RAD2
 Antenna Ey
 Mode LIN(1)
 SUM/SEP SEP
 Toggle OFF
 RAD1
 Antenna Ex
 Mode LIS(2,4)
 SUM/SEP SUM
 Toggle OFF
 TNR
 Antenna ExEy
 Mode A-32
 Sweep ACE