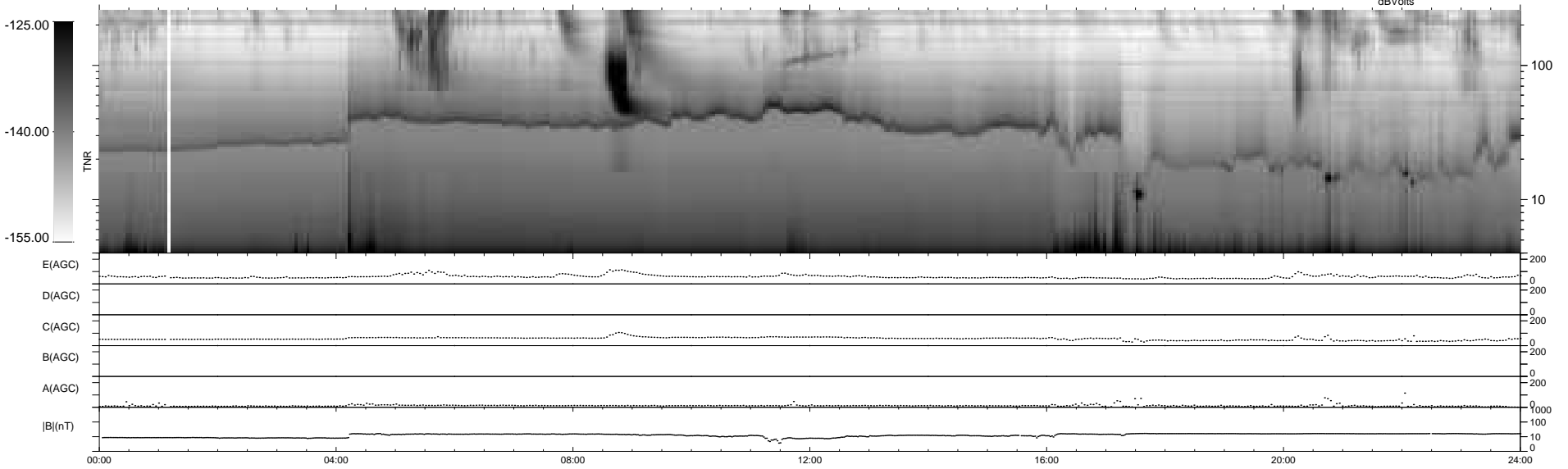
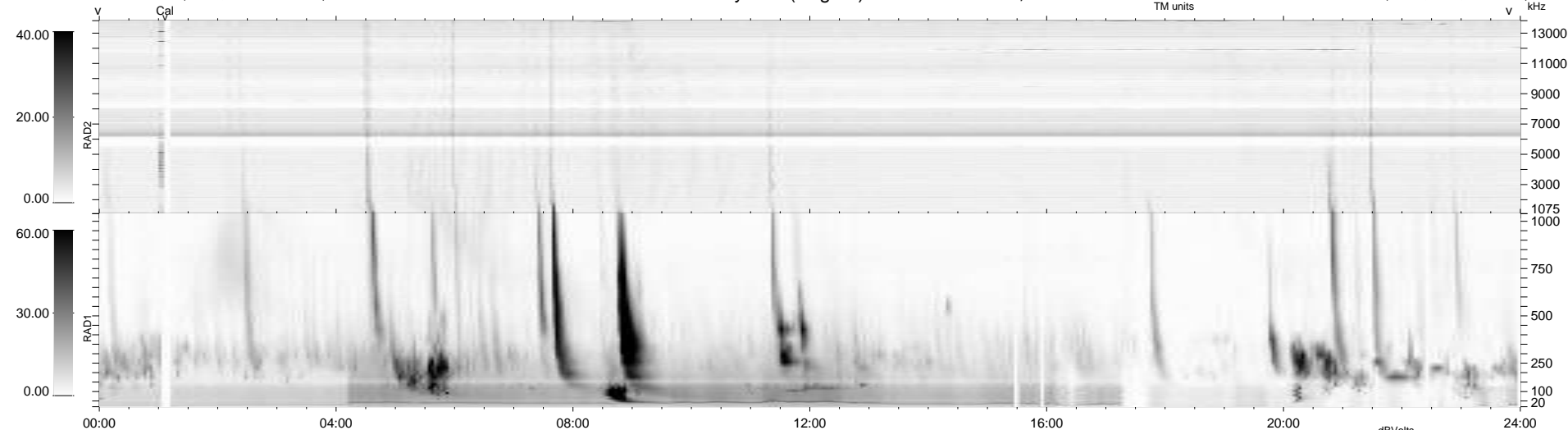


4 bad + 935 good MF/939MF projected (99%) - 0 missing MFs  
 Avg interval = 180 secs  
 Re = 257.81 (248.25, 67.86, 15.14 GSE)

windlib 2.0b LZ version = v03  
 DAILY 2012-10-10 16:16:07  
 Re = 258.21 (249.31, 65.35, 15.64 GSE)

### WIND/WAVES Summary Plot (Page 1) for 08-OCT-2012, DOY = 282



RAD2  
 Antenna Ey .....  
 Mode LIN(1) .....  
 SUM/SEP SEP .....  
 Toggle OFF .....  
 RAD1  
 Antenna Ex .....  
 Mode LIS(2/4) .....  
 SUM/SEP SUM .....  
 Toggle OFF .....  
 TNR  
 Antenna ExEy .....  
 Mode A-32 .....  
 Sweep ACE .....