

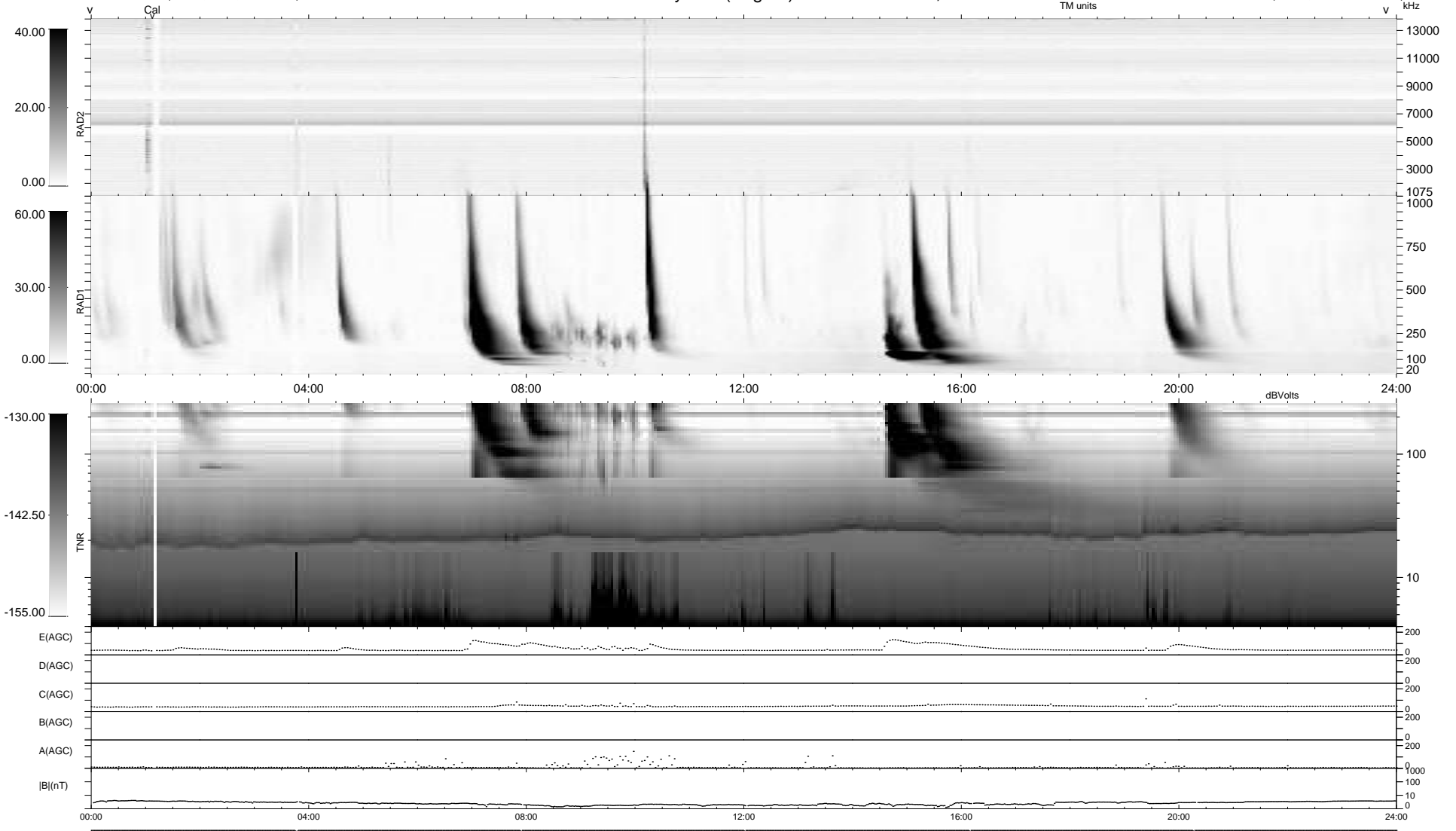
6 bad + 934 good MF/940MF projected (99%) - 0 missing MFs  
 Avg interval = 180 secs  
 Re = 256.11 (243.79, 77.41, 12.98 GSE)

windlib 2.0b

LZ version = v01

### WIND/WAVES Summary Plot (Page 1) for 04-OCT-2012, DOY = 278

DAILY 2012-10-06 01:16:07  
 Re = 256.53 (244.91, 75.13, 13.53 GSE)



```

RAD2
Antenna Ey .....
Mode LIN(1) .....
SUM/SEP SEP .....
Toggle OFF .....

RAD1
Antenna Ex .....
Mode LIS(2,4) .....
SUM/SEP SUM .....
Toggle OFF .....

TNR
Antenna ExEy .....
Mode A-32 .....
Sweep ACE .....
  
```