

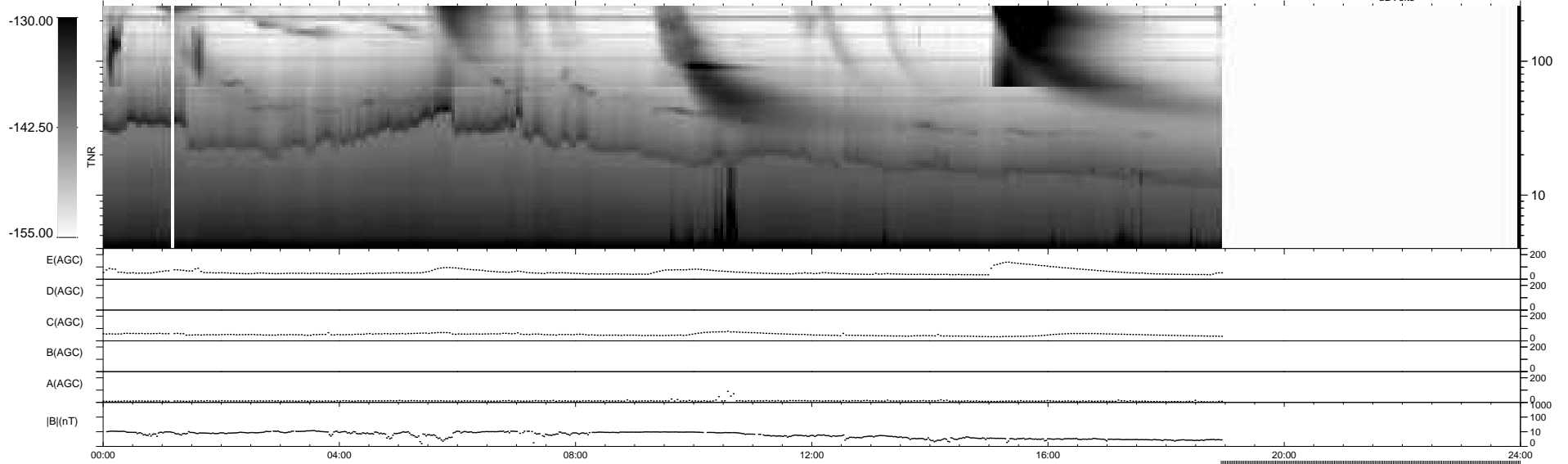
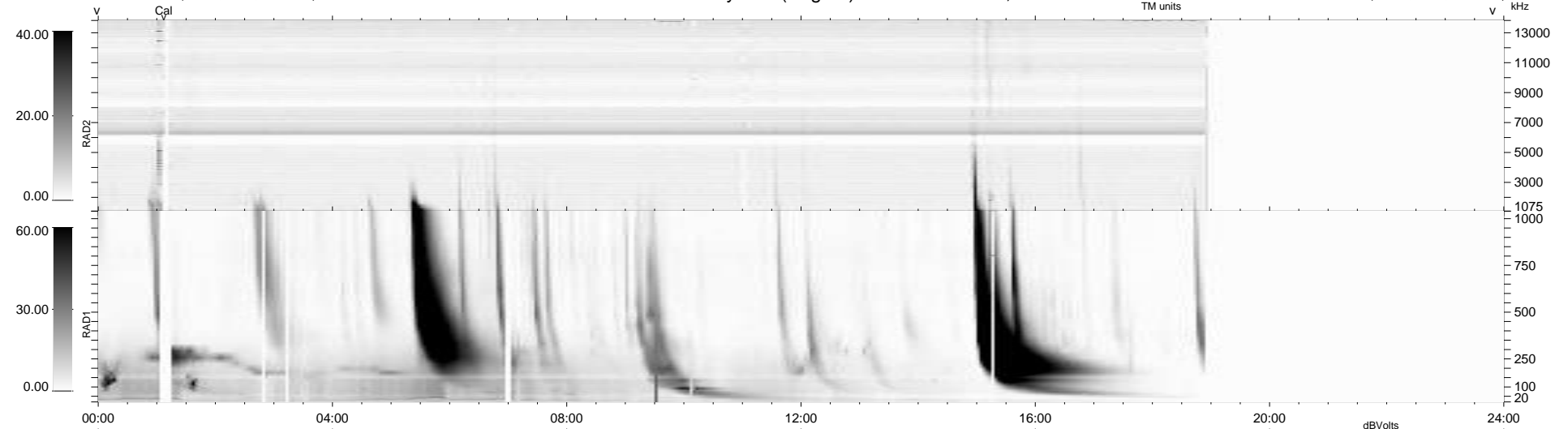
16 bad + 724 good MF/939MF projected (77%) - 199 missing MFs
 Avg interval = 180 secs
 Re = -249.42 (229.06, 98.62, 3.85 GSE)

windlib 2.0b

LZ version = v01

WIND/WAVES Summary Plot (Page 1) for 20-SEP-2012, DOY = 264

DAILY 2012-09-22 02:16:06
 Re = 250.09 (230.05, 97.98, 4.56 GSE)



```

RAD2
Antenna Ey .....
Mode LIN(1) .....
SUM/SEP SEP .....
Toggle OFF .....

RAD1
Antenna Ex .....
Mode LIS(2,4) .....
SUM/SEP SUM .....
Toggle OFF .....

TNR
Antenna ExEy .....
Mode A-32 .....
Sweep ACE .....
  
```