

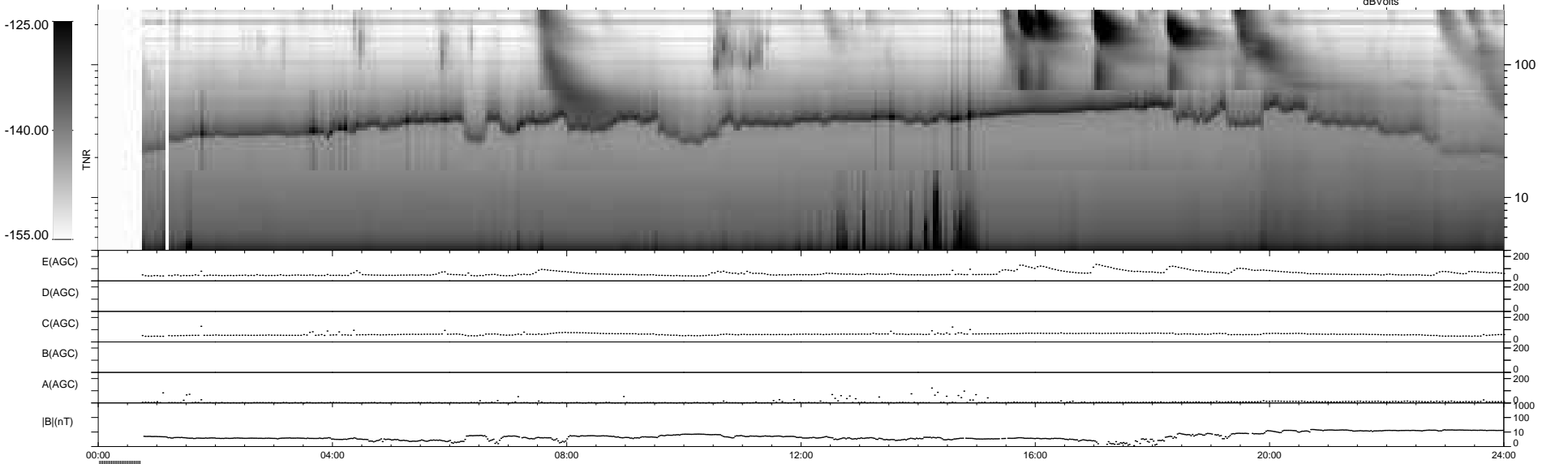
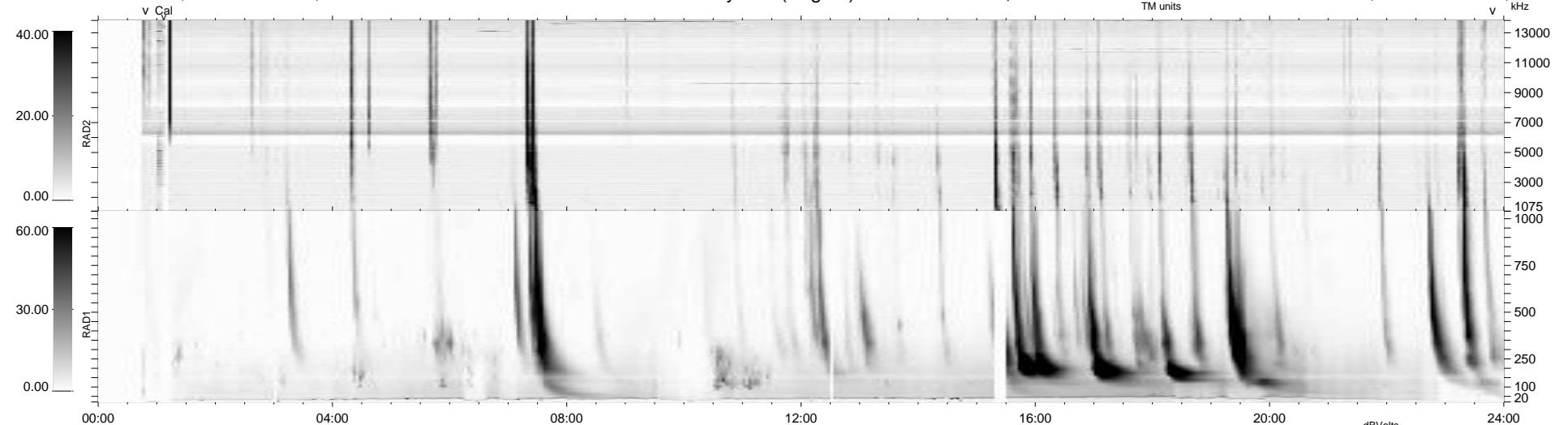
18 bad + 893 good MF/939MF projected (95%) - 28 missing MFs  
Avg interval = 180 secs  
Re = 241.69 (220.43, 99.10, -1.86 GSE)

windlib 2.0b

LZ version = v01

### WIND/WAVES Summary Plot (Page 1) for 12-SEP-2012, DOY = 256

DAILY 2012-09-14 03:16:09  
Re = 242.80 (221.51, 99.42, -1.18 GSE)



RAD2 Antenna Mode SUM/SEP Toggle  
RAD1 Antenna Mode SUM/SEP Toggle  
TNR Antenna Mode Sweep