

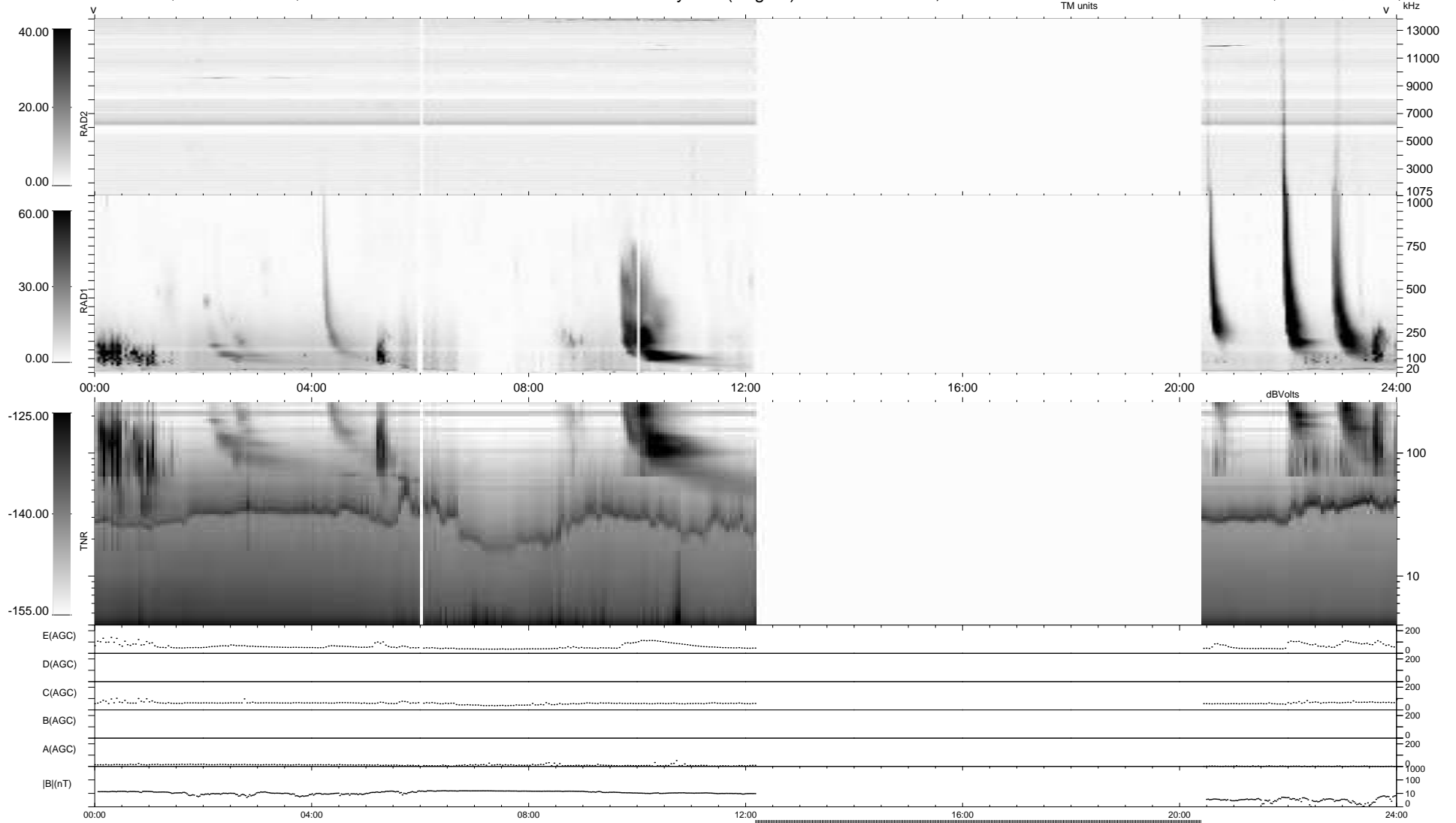
18 bad + 599 good MF/939MF projected (63%) - 322 missing MFs
 Avg interval = 180 secs
 Re = -232.92 (212.92, 94.20, -6.67 GSE)

windlib 2.0b

LZ version = v01

WIND/WAVES Summary Plot (Page 1) for 05-SEP-2012, DOY = 249

DAILY 2012-09-06 22:16:06
 Re = 234.17 (213.88, 95.16, -6.01 GSE)



RAD2
 Antenna Ey
 Mode LIN(1)
 SUM/SEP SEP
 Toggle OFF
 RAD1
 Antenna Ex
 Mode LIS(2,4)
 SUM/SEP SUM
 Toggle OFF
 TNR
 Antenna ExEy
 Mode A-32
 Sweep ACE