

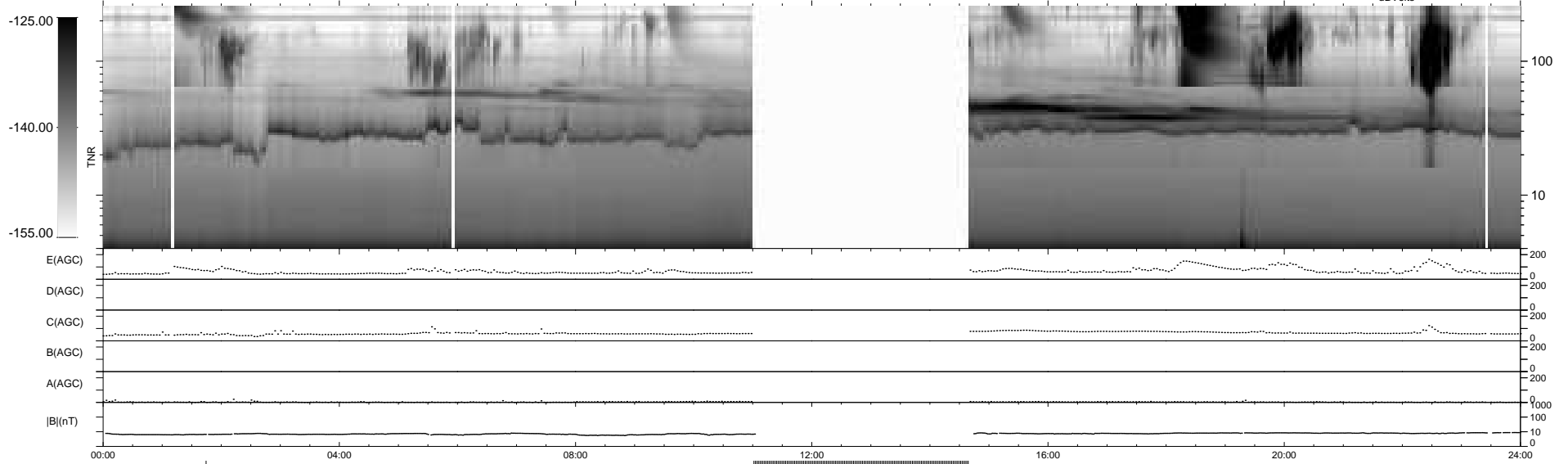
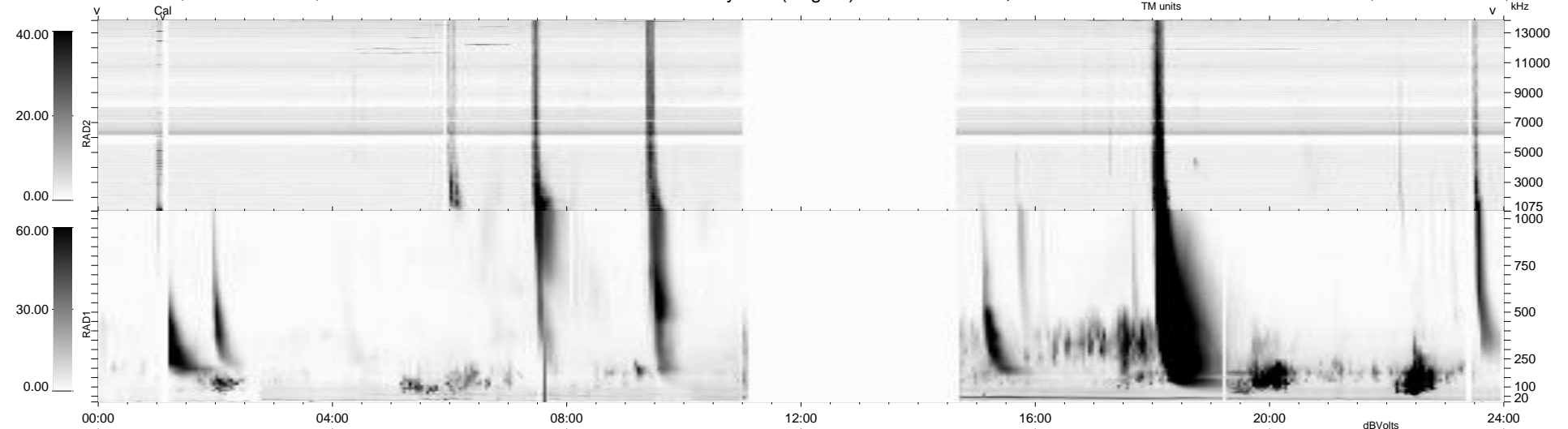
22 bad + 773 good MF/939MF projected (82%) - 144 missing MFs
 Avg interval = 180 secs
 Re = 229.21 (210.32, 90.72, -8.63 GSE)

windlib 2.0b

LZ version = v01

WIND/WAVES Summary Plot (Page 1) for 02-SEP-2012, DOY = 246

DAILY 2012-09-03 22:16:06
 Re = 230.42 (211.12, 91.97, -7.99 GSE)



```

RAD2
Antenna Ey .....
Mode LIN(1) .....
SUM/SEP SEP .....
Toggle OFF .....

RAD1
Antenna Ex .....
Mode LIS(2,4) .....
SUM/SEP SUM .....
Toggle OFF .....

TNR
Antenna ExEy .....
Mode A-32 .....
Sweep ACE .....
  
```