

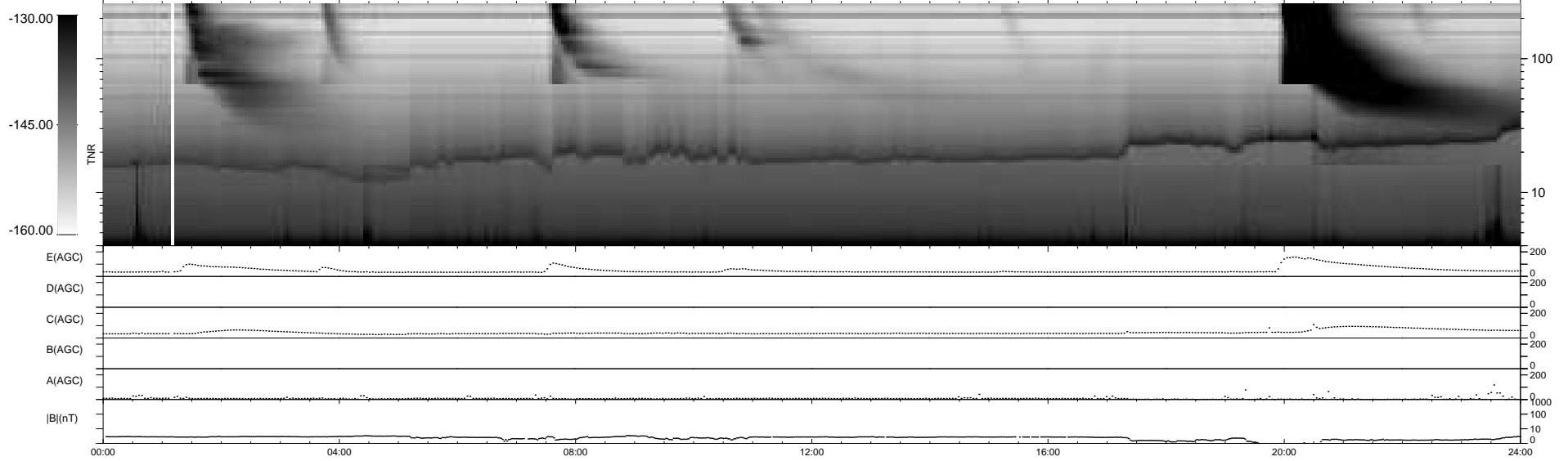
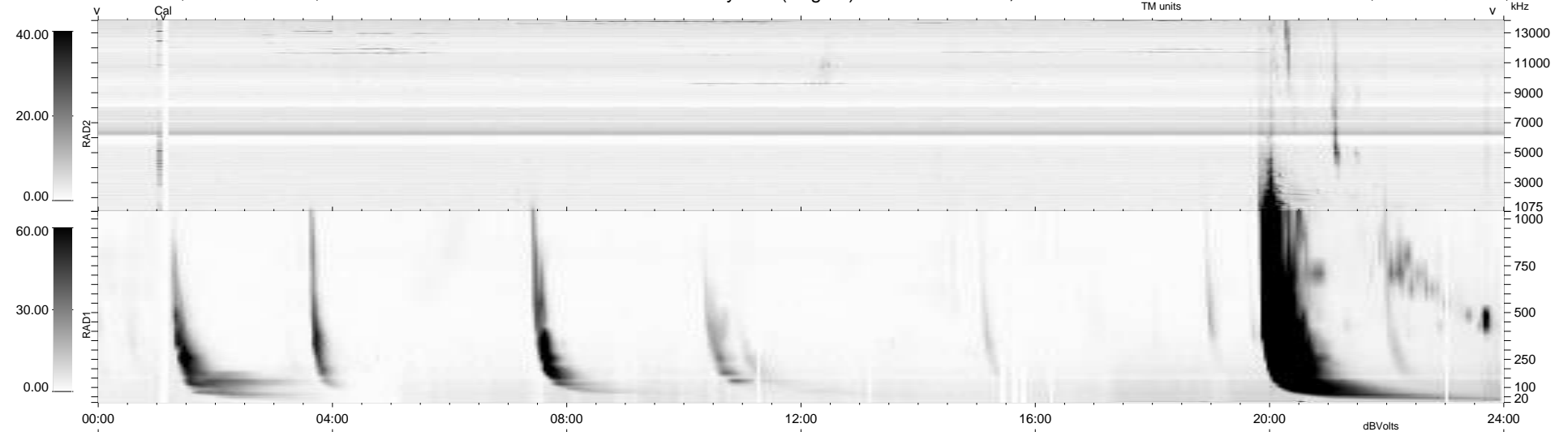
11 bad + 928 good MF/939MF projected (98%) - 0 missing MFs
 Avg interval = 180 secs
 Re = 226.83 (208.88, 87.88, -9.89 GSE)

windlib 2.0b

LZ version = v01

WIND/WAVES Summary Plot (Page 1) for 31-AUG-2012, DOY = 244

DAILY 2012-09-01 05:16:07
 Re = 228.00 (209.56, 89.34, -9.27 GSE)



RAD2
 Antenna Ey
 Mode LIN(1)
 SUM/SEP SEP
 Toggle OFF
 RAD1
 Antenna Ex
 Mode LIS(2,4)
 SUM/SEP SUM
 Toggle OFF
 TNR
 Antenna ExEy
 Mode A-32
 Sweep ACE