

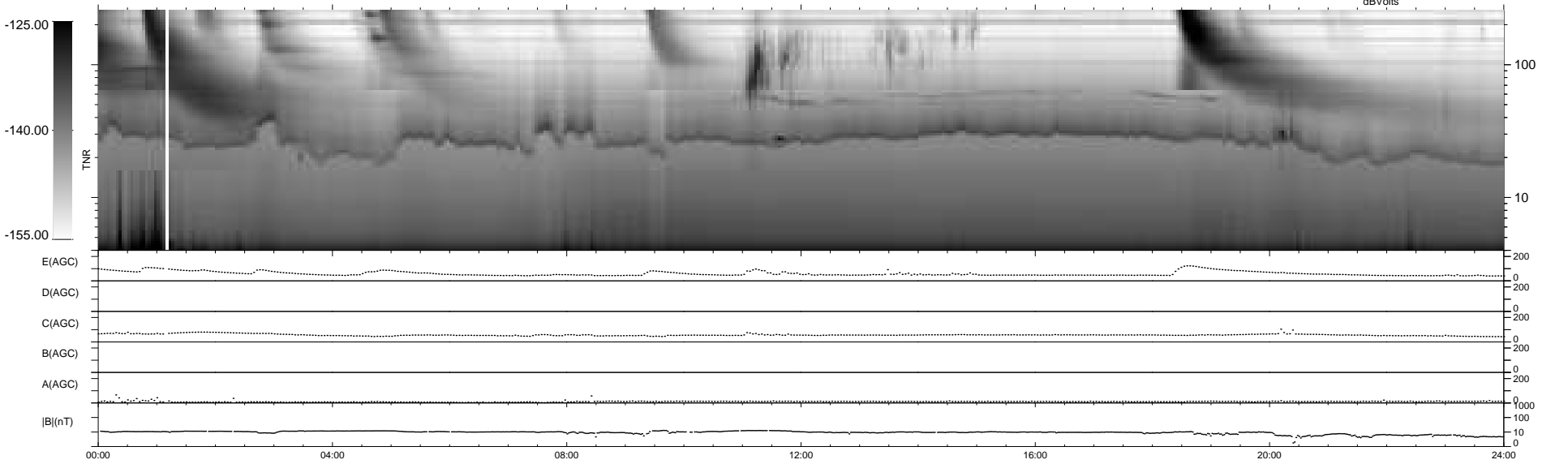
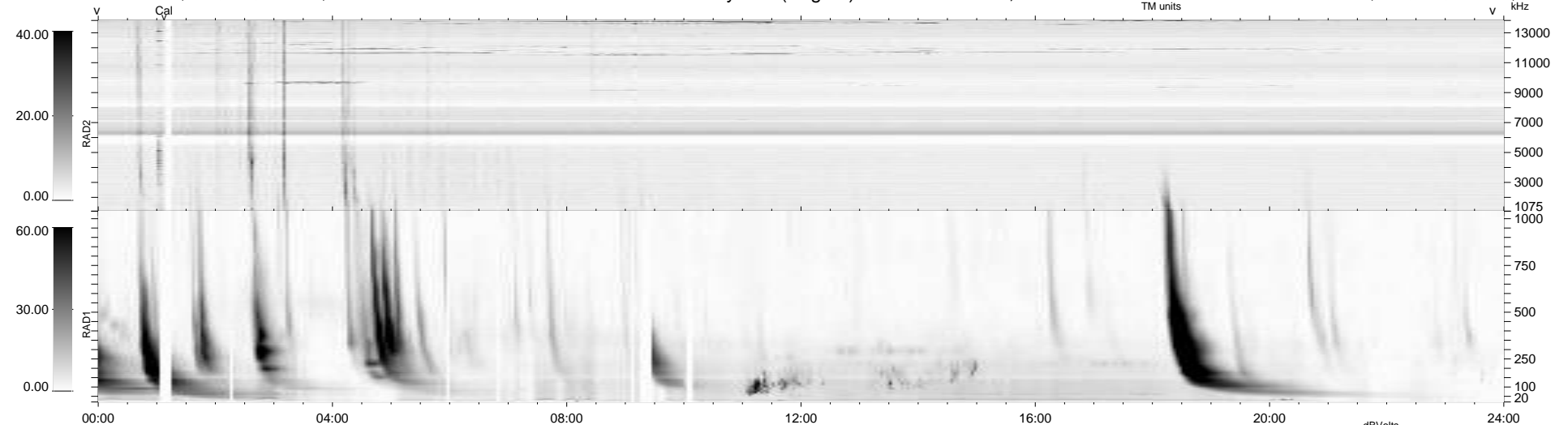
21 bad + 919 good MF/940MF projected (97%) - 0 missing MFs  
 Avg interval = 180 secs  
 Re = - 213.74 (204.44, 60.21, -16.30 GSE)

windlib 2.0b

LZ version = v01

### WIND/WAVES Summary Plot (Page 1) for 19-AUG-2012, DOY = 232

DAILY 2012-08-20 07:16:08  
 Re = 214.80 (204.69, 63.17, -15.88 GSE)



RAD2  
 Antenna Ey .....  
 Mode LIN(1) .....  
 SUM/SEP SEP .....  
 Toggle OFF .....  
 RAD1  
 Antenna Ex .....  
 Mode LIS(2,4) .....  
 SUM/SEP SUM .....  
 Toggle OFF .....  
 TNR  
 Antenna ExEy .....  
 Mode A-32 .....  
 Sweep ACE .....