

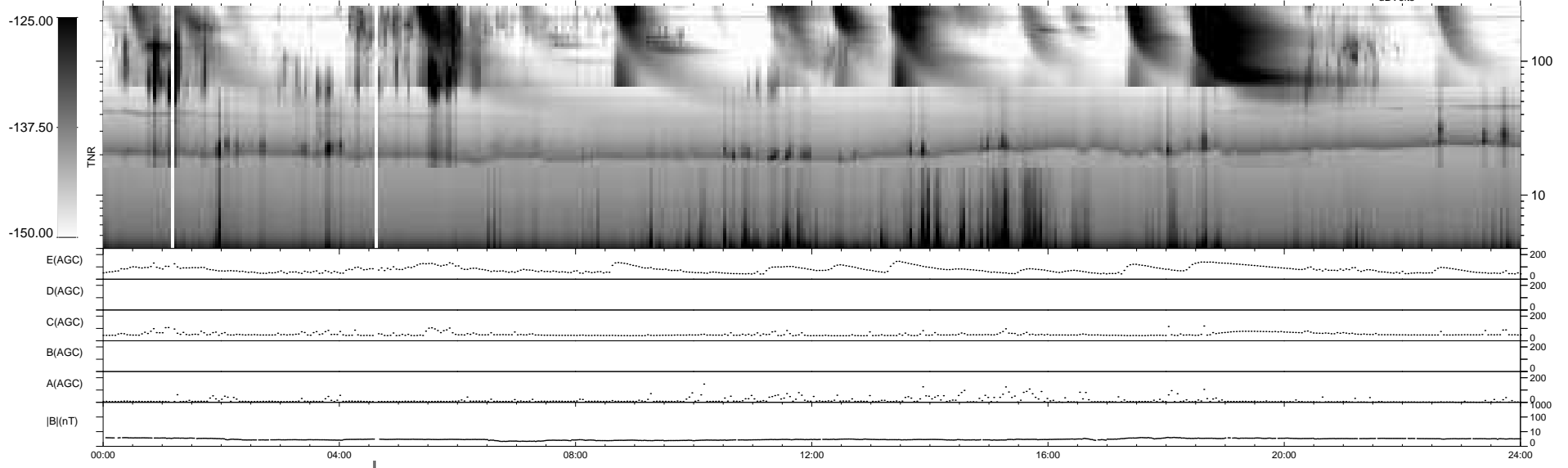
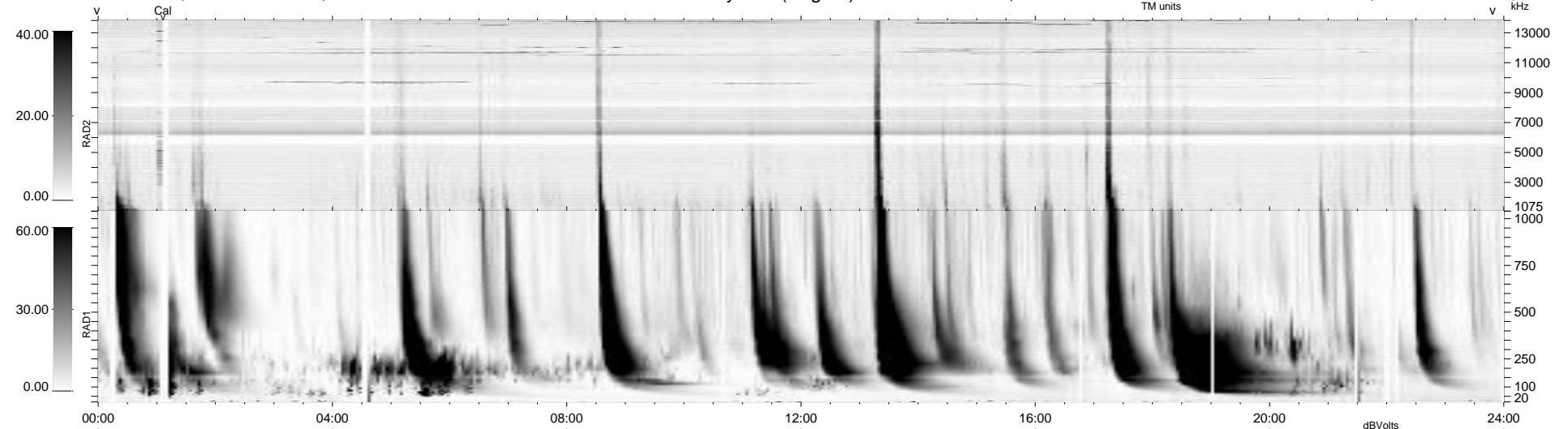
22 bad + 915 good MF/939MF projected (97%) - 2 missing MFs
 Avg interval = 180 secs
 Re = 211.62 (203.92, 53.95, -17.05 GSE)

windlib 2.0b

LZ version = v02

WIND/WAVES Summary Plot (Page 1) for 17-AUG-2012, DOY = 230

DAILY 2012-08-20 11:16:06
 Re = 212.67 (204.18, 57.10, -16.69 GSE)



```

RAD2
Antenna Ey .....
Mode LIN(1) .....
SUM/SEP SEP .....
Toggle OFF .....

RAD1
Antenna Ex .....
Mode LIS(2,4) .....
SUM/SEP SUM .....
Toggle OFF .....

TNR
Antenna ExEy .....
Mode A-32 .....
Sweep ACE .....
  
```