

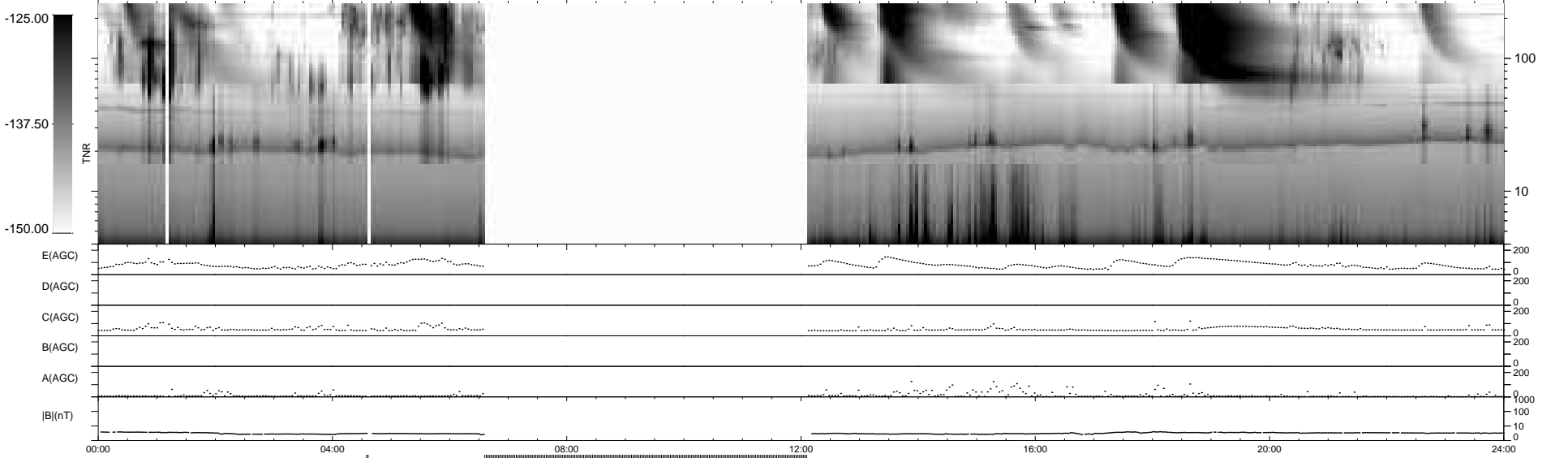
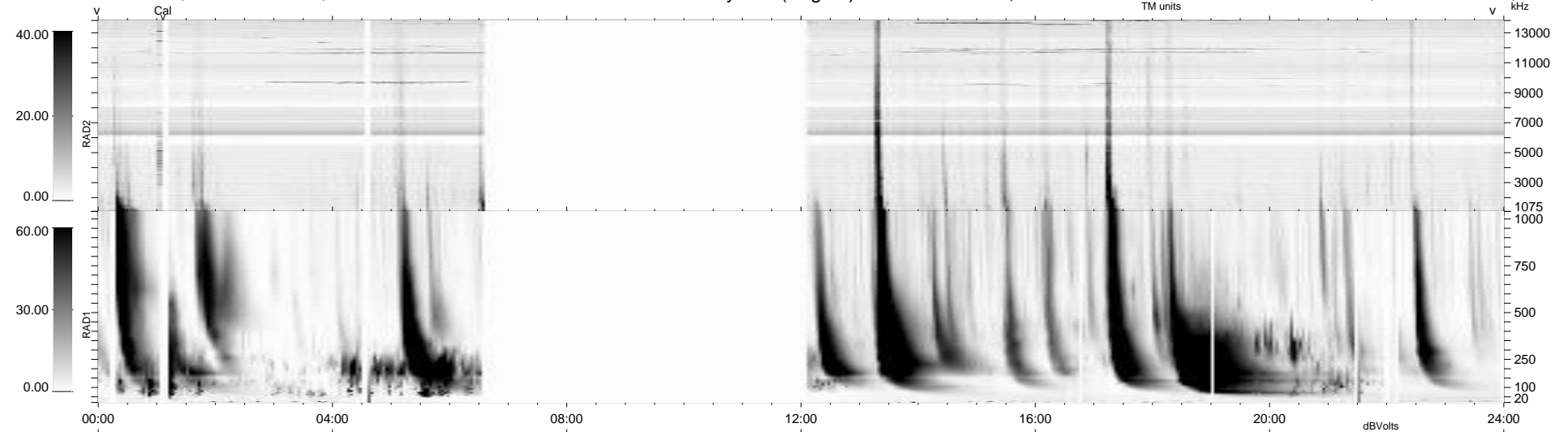
22 bad + 699 good MF/939MF projected (74%) - 218 missing MFs
 Avg interval = 180 secs
 Re = 211.62 (203.92, 53.95, -17.05 GSE)

windlib 2.0b

LZ version = v01

WIND/WAVES Summary Plot (Page 1) for 17-AUG-2012, DOY = 230

DAILY 2012-08-18 06:16:06
 Re = 212.67 (204.18, 57.10, -16.69 GSE)



RAD2
 Antenna Ey
 Mode LIN(1)
 SUM/SEP SEP
 Toggle OFF

RAD1
 Antenna Ex
 Mode LIS(2,4)
 SUM/SEP SUM
 Toggle OFF

TNR
 Antenna ExEy
 Mode A-32
 Sweep ACE