

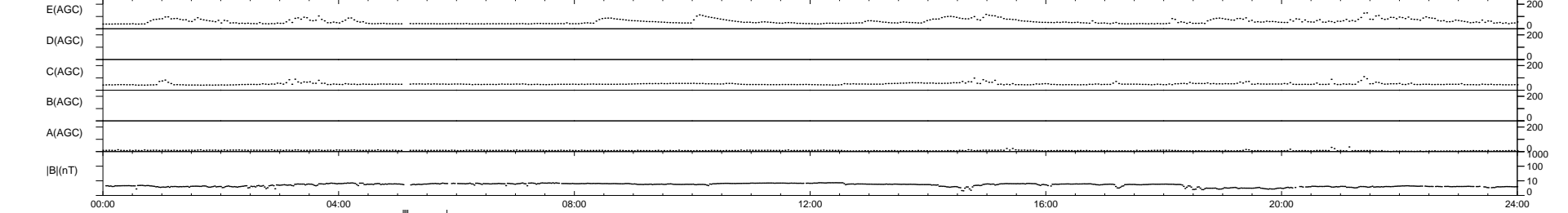
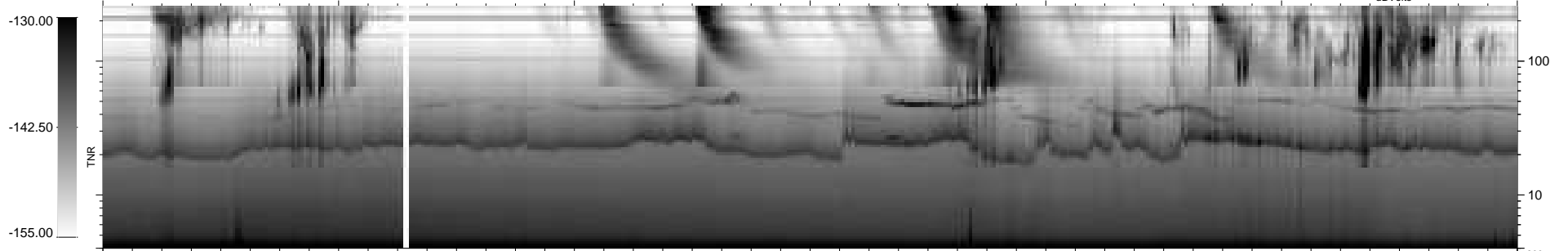
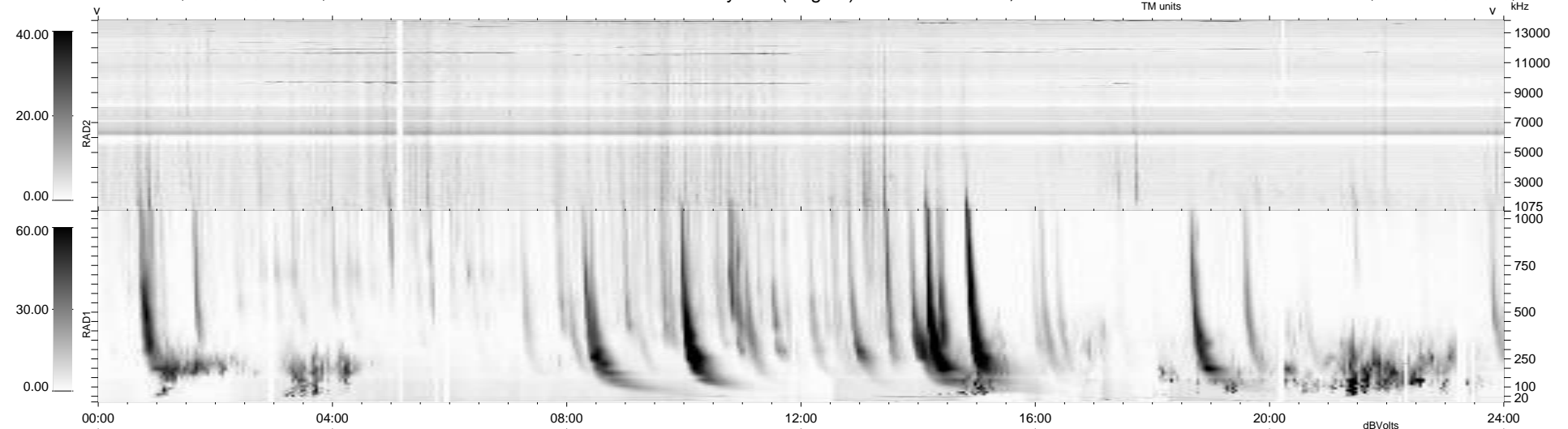
25 bad + 909 good MF/939MF projected (96%) - 5 missing MFs  
 Avg interval = 180 secs  
 Re = 210.59 (203.65, 50.71, -17.38 GSE)

windlib 2.0b

LZ version = v01

### WIND/WAVES Summary Plot (Page 1) for 16-AUG-2012, DOY = 229

DAILY 2012-08-17 09:16:06  
 Re = 211.62 (203.92, 53.93, -17.05 GSE)



RAD2  
 Antenna Ey  
 Mode LIN(1)  
 SUM/SEP SEP  
 Toggle OFF

RAD1  
 Antenna Ex  
 Mode LIS(2,4)  
 SUM/SEP SUM  
 Toggle OFF

TNR  
 Antenna ExEy  
 Mode A-32  
 Sweep ACE