

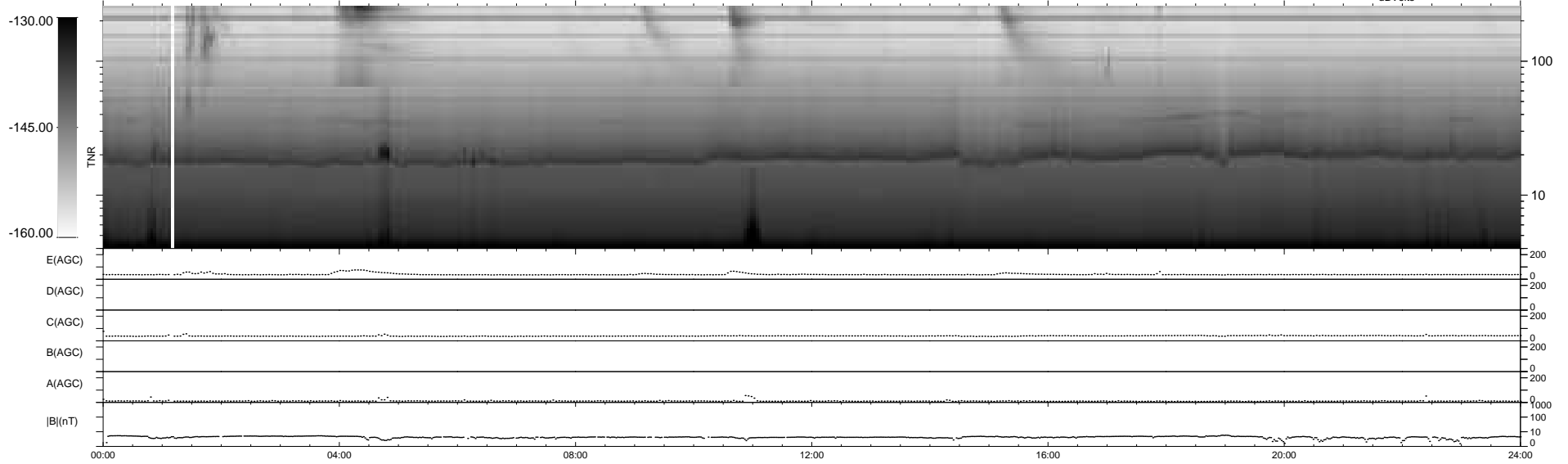
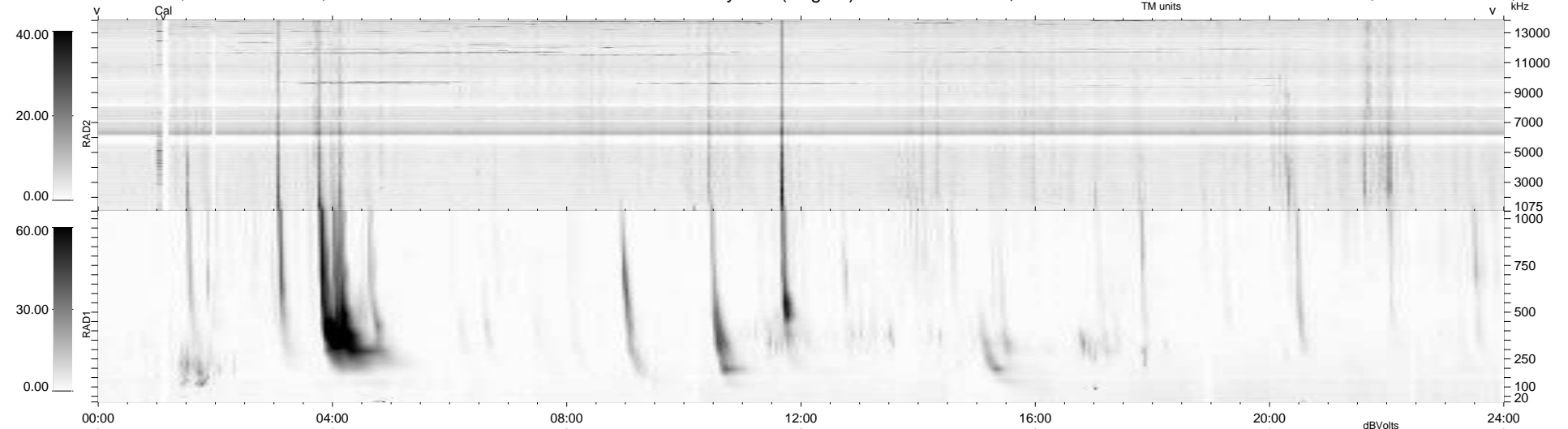
21 bad + 918 good MF/939MF projected (97%) - 0 missing MFs
 Avg interval = 180 secs
 Re = 209.57 (203.37, 47.41, -17.68 GSE)

windlib 2.0b

LZ version = v01

WIND/WAVES Summary Plot (Page 1) for 15-AUG-2012, DOY = 228

DAILY 2012-08-16 10:16:07
 Re = 210.58 (203.65, 50.69, -17.38 GSE)



```

RAD2
Antenna Ey .....
Mode LIN(1) .....
SUM/SEP SEP .....
Toggle OFF .....

RAD1
Antenna Ex .....
Mode LIS(2/4) .....
SUM/SEP SUM .....
Toggle OFF .....

TNR
Antenna ExEy .....
Mode A-32 .....
Sweep ACE .....
  
```