

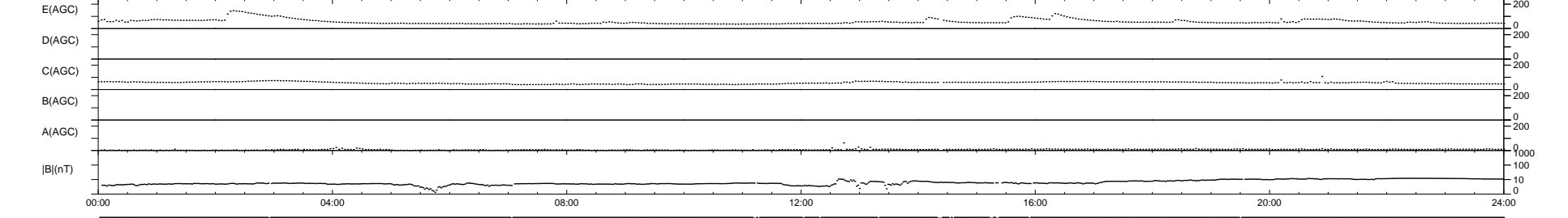
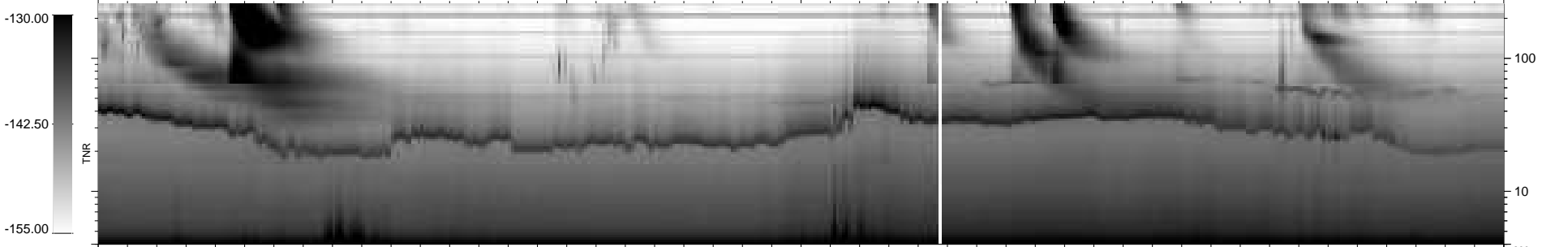
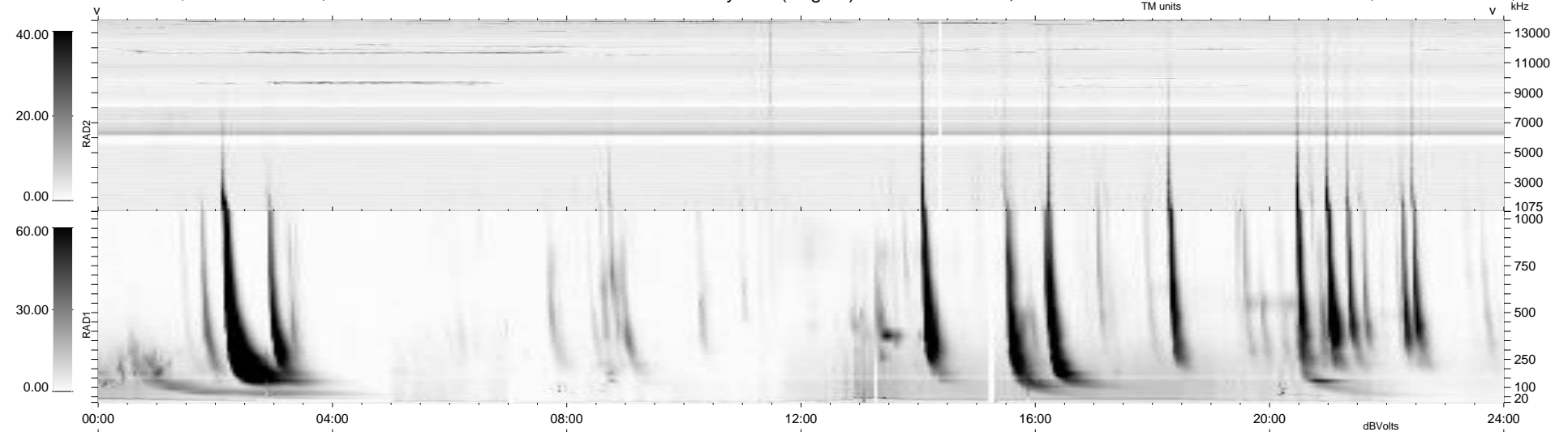
19 bad + 920 good MF/939MF projected (97%) - 0 missing MFs  
 Avg interval = 180 secs  
 Re = 206.76 (202.54, 37.22, -18.41 GSE)

windlib 2.0b

LZ version = v01

### WIND/WAVES Summary Plot (Page 1) for 12-AUG-2012, DOY = 225

DAILY 2012-08-13 09:16:08  
 Re = 207.64 (202.82, 40.63, -18.20 GSE)



RAD2  
 Antenna Ey .....  
 Mode LIN(1) .....  
 SUM/SEP SEP .....  
 Toggle OFF .....  
 RAD1  
 Antenna Ex .....  
 Mode LIS(2,4) .....  
 SUM/SEP SUM .....  
 Toggle OFF .....  
 TNR  
 Antenna ExEy .....  
 Mode A-32 .....  
 Sweep ACE .....