

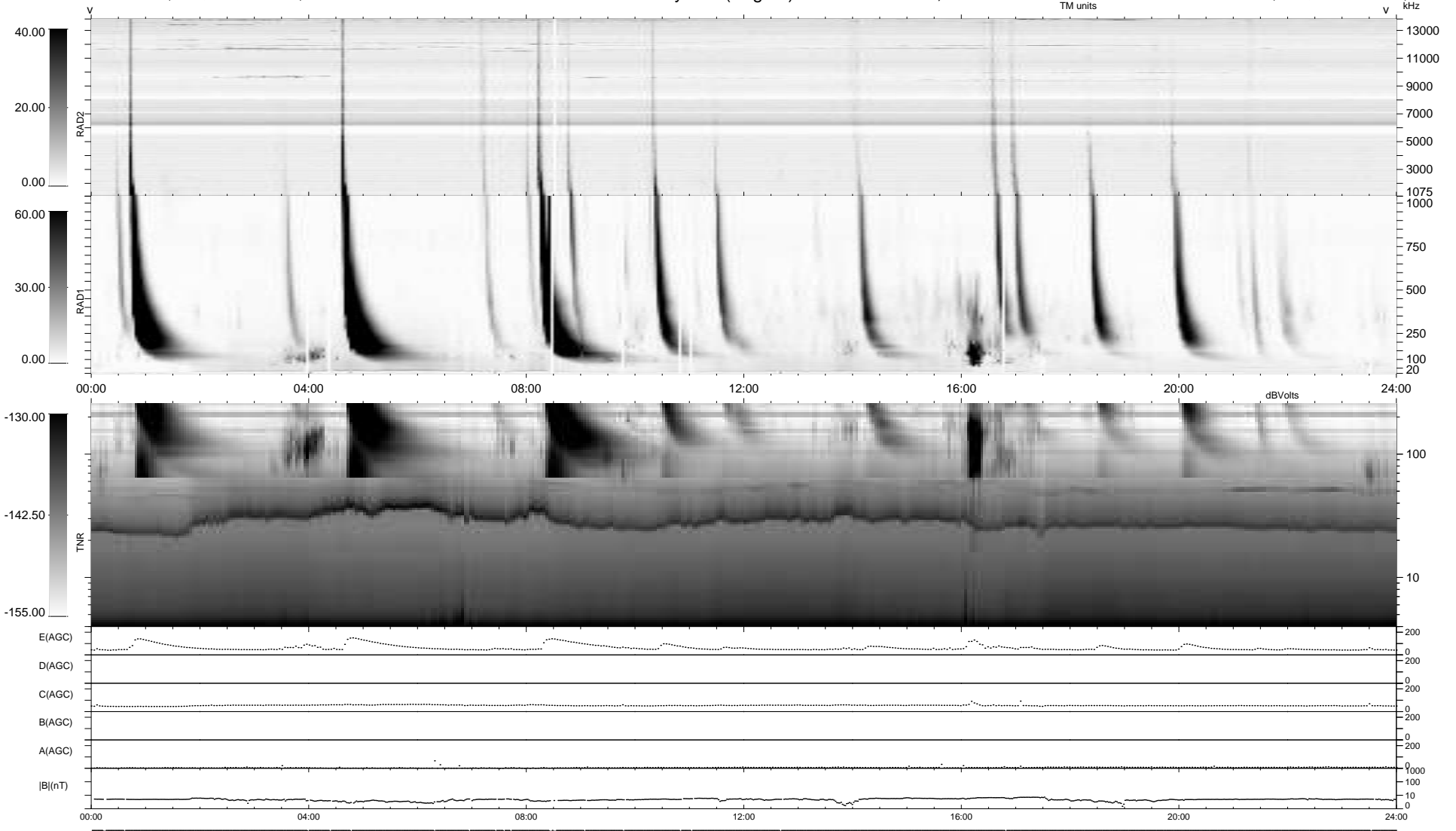
22 bad + 917 good MF/939MF projected (97%) - 0 missing MFs  
 Avg interval = 180 secs  
 Re = 202.80 (201.26, 16.21, -19.05 GSE)

windlib 2.0b

LZ version = v01

### WIND/WAVES Summary Plot (Page 1) for 06-AUG-2012, DOY = 219

DAILY 2012-08-08 03:16:07  
 Re = 203.26 (201.41, 19.71, -19.02 GSE)



RAD2  
 Antenna Ey  
 Mode LIN(1)  
 SUM/SEP SEP  
 Toggle OFF

RAD1  
 Antenna Ex  
 Mode LIS(2,4)  
 SUM/SEP SUM  
 Toggle OFF

TNR  
 Antenna ExEy  
 Mode A-32  
 Sweep ACE