

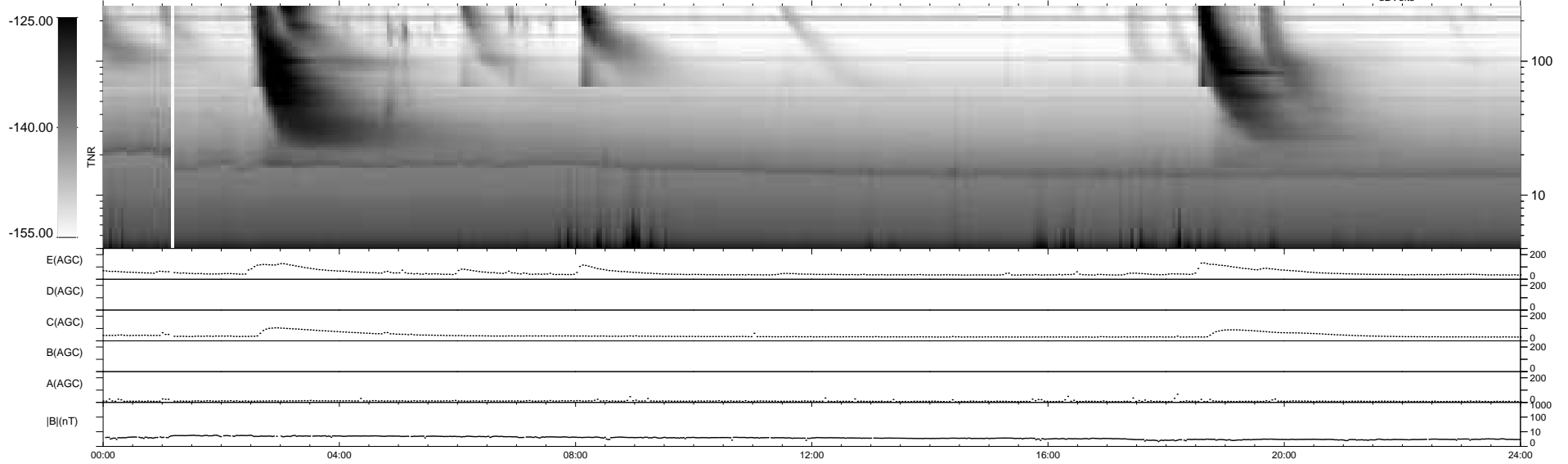
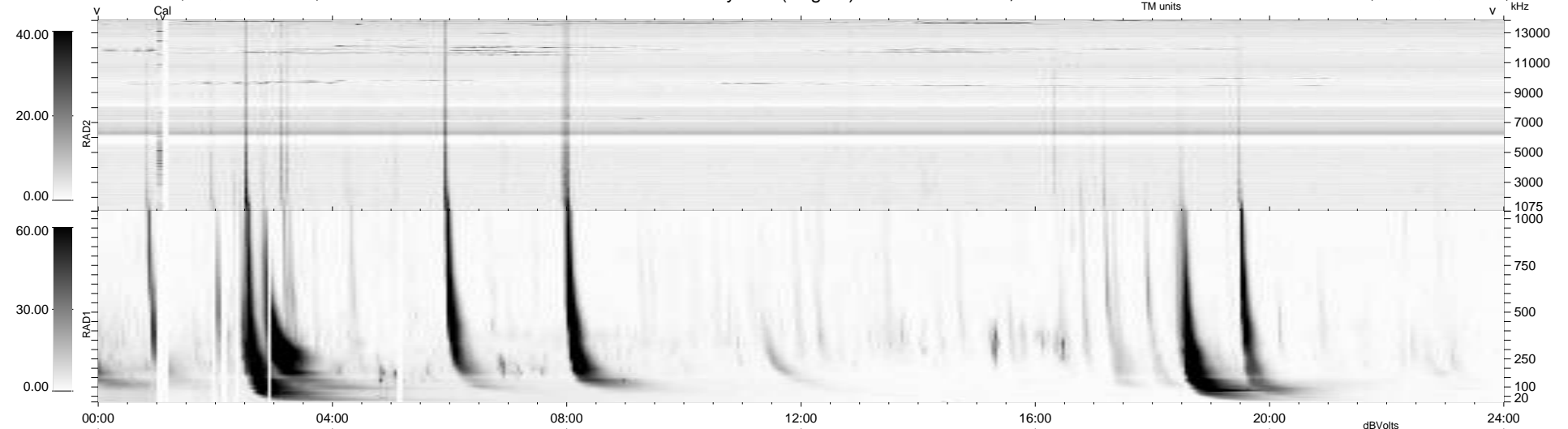
16 bad + 923 good MF/939MF projected (98%) - 0 missing MFs
 Avg interval = 180 secs
 Re = 202.00 (201.03, 5.63, -18.98 GSE)

windlib 2.0b

LZ version = v01

WIND/WAVES Summary Plot (Page 1) for 03-AUG-2012, DOY = 216

DAILY 2012-08-06 12:18:02
 Re = 202.17 (201.06, 9.14, -19.03 GSE)



RAD2
 Antenna Ey
 Mode LIN(1)
 SUM/SEP SEP
 Toggle OFF

RAD1
 Antenna Ex
 Mode LIS(2/4)
 SUM/SEP SUM
 Toggle OFF

TNR
 Antenna ExEy
 Mode A-32
 Sweep ACE