

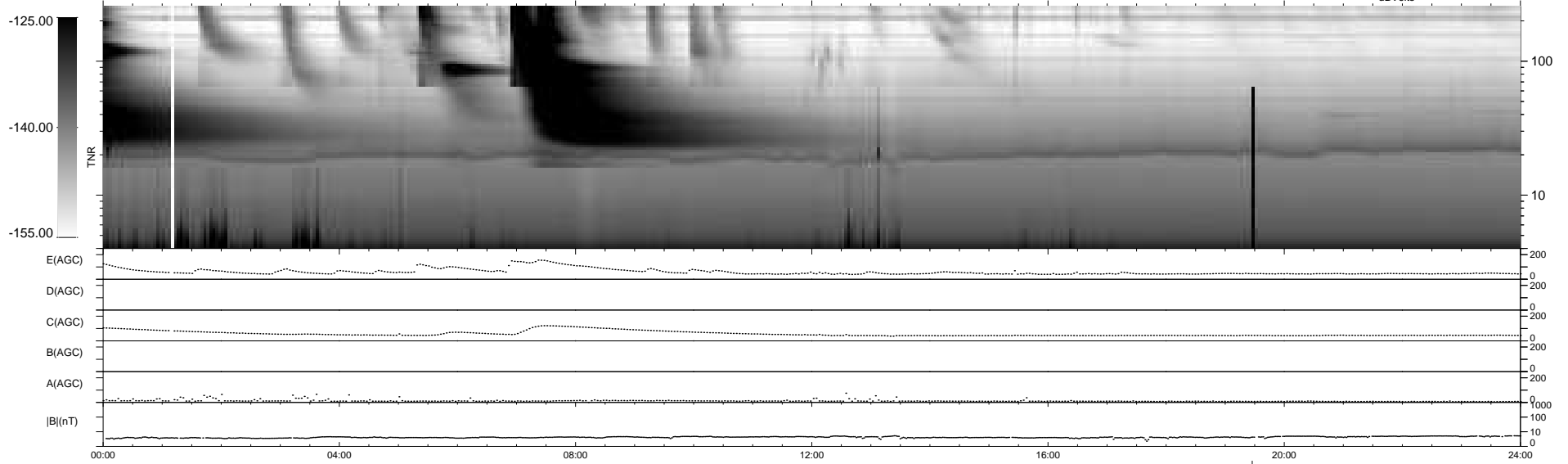
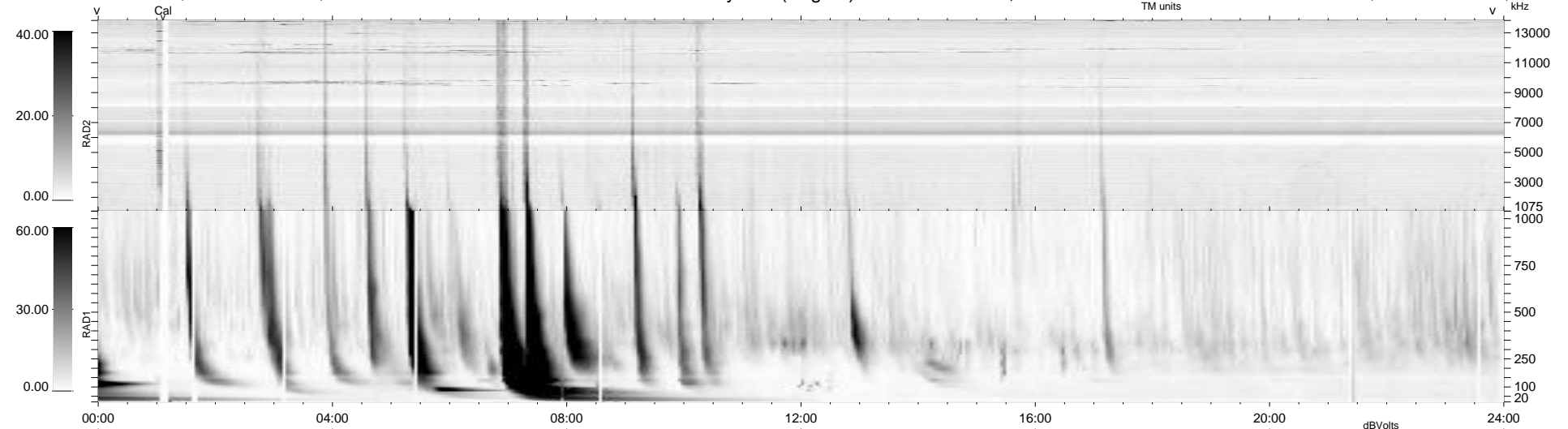
21 bad + 917 good MF/939MF projected (97%) - 1 missing MF
 Avg interval = 180 secs
 Re = - 201.99 (201.11, -1.42, -18.79 GSE)

windlib 2.0b

LZ version = v01

WIND/WAVES Summary Plot (Page 1) for 01-AUG-2012, DOY = 214

DAILY 2012-08-06 12:16:20
 Re = 201.94 (201.05, 2.08, -18.90 GSE)



RAD2
 Antenna Ey
 Mode LIN(1)
 SUM/SEP SEP
 Toggle OFF
 RAD1
 Antenna Ex
 Mode LIS(2/4)
 SUM/SEP SUM
 Toggle OFF
 TNR
 Antenna ExEy
 Mode A-32
 Sweep ACE