

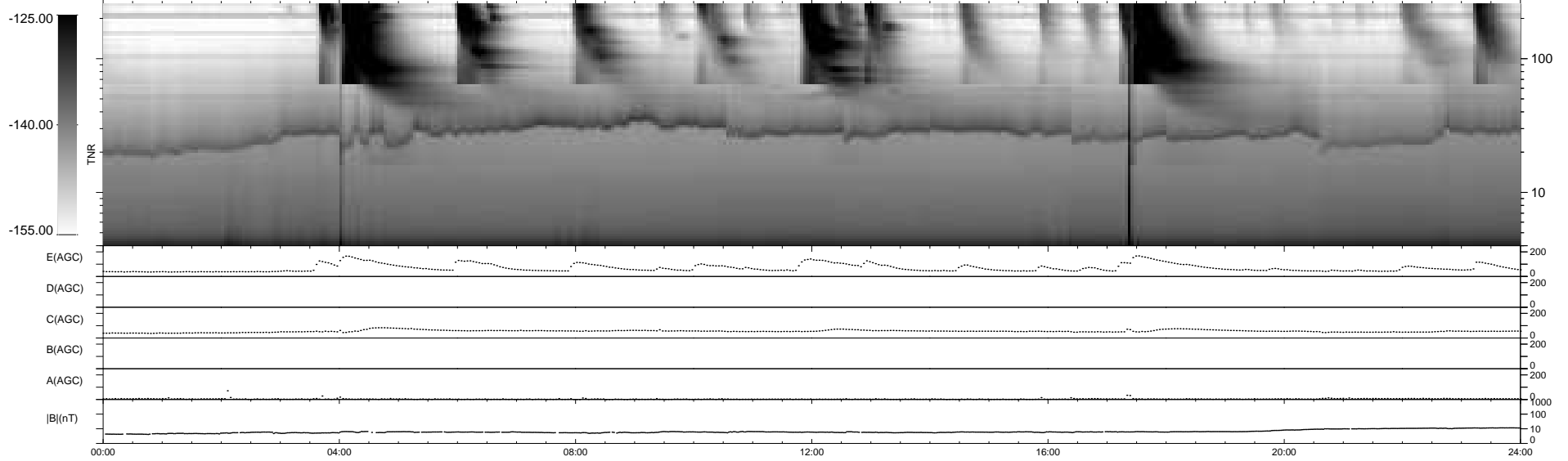
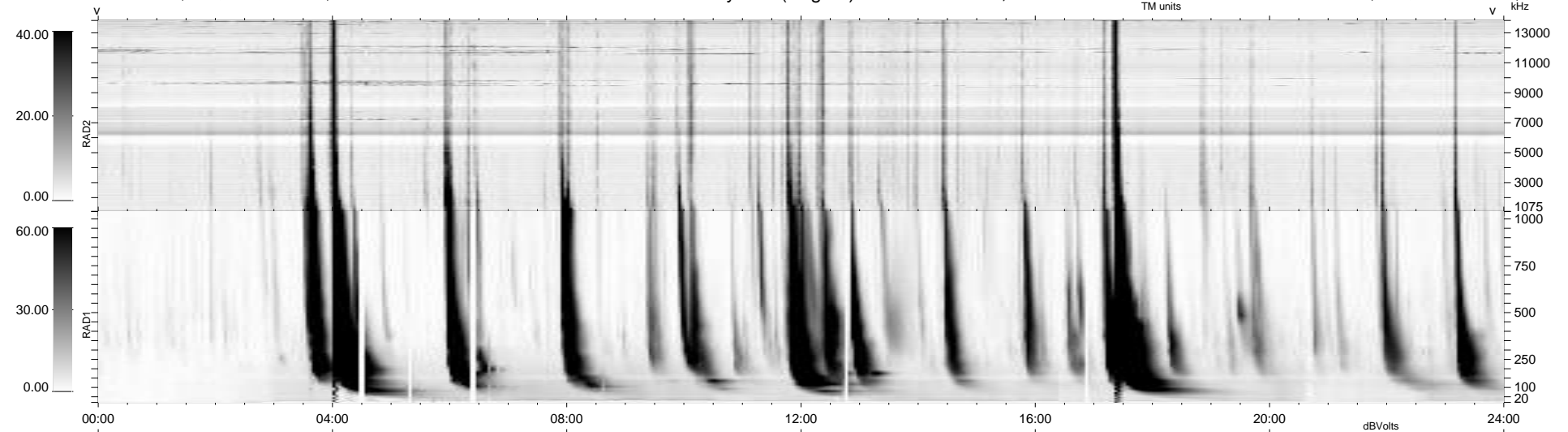
20 bad + 920 good MF/940MF projected (97%) - 0 missing MFs
 Avg interval = 180 secs
 Re = 203.75 (202.06, -19.21, -17.79 GSE)

windlib 2.0b

LZ version = v01

WIND/WAVES Summary Plot (Page 1) for 27-JUL-2012, DOY = 209

DAILY 2012-07-28 21:16:08
 Re = 203.21 (201.80, -15.66, -18.05 GSE)



RAD2
 Antenna Ey
 Mode LIN(1)
 SUM/SEP SEP
 Toggle OFF

RAD1
 Antenna Ex
 Mode LIS(2,4)
 SUM/SEP SUM
 Toggle OFF

TNR
 Antenna ExEy
 Mode A-32
 Sweep ACE