

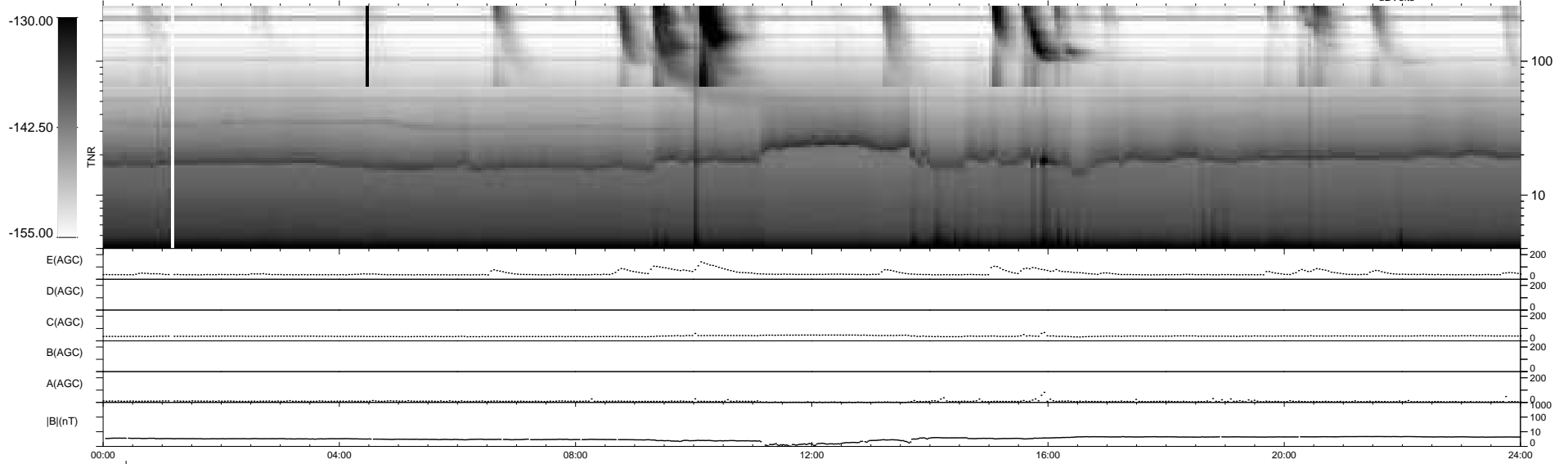
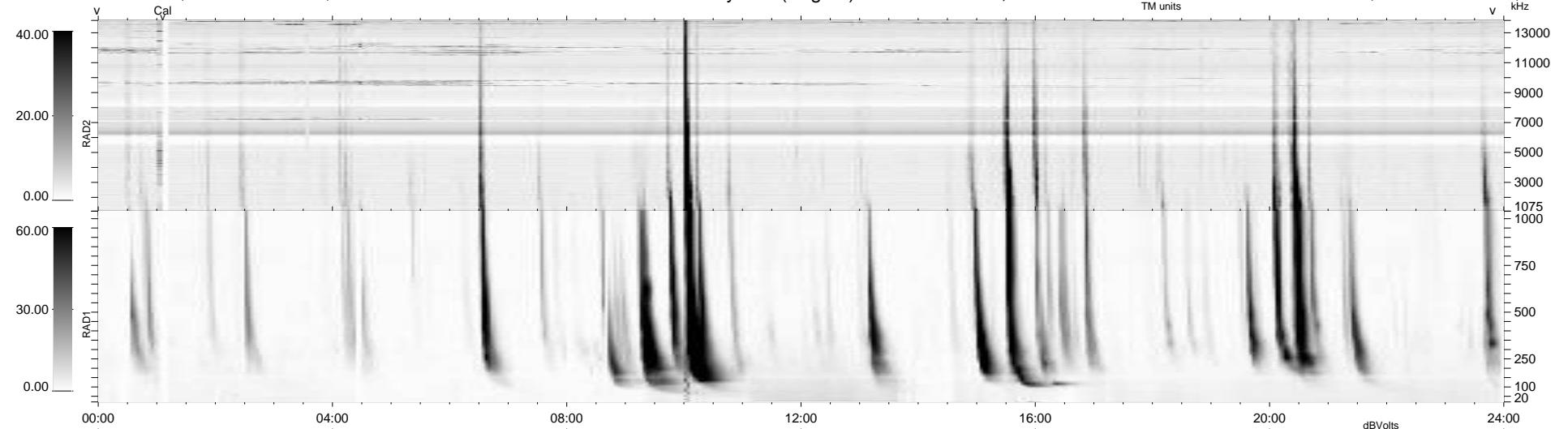
23 bad + 915 good MF/939MF projected (97%) - 1 missing MF
 Avg interval = 180 secs
 Re = 204.37 (202.34, -22.79, -17.50 GSE)

windlib 2.0b

LZ version = v02

WIND/WAVES Summary Plot (Page 1) for 26-JUL-2012, DOY = 208

DAILY 2012-07-30 10:16:08
 Re = 203.75 (202.06, -19.24, -17.79 GSE)



```

RAD2
Antenna  Ey .....
Mode     LIN(1) .....
SUM/SEP  SEP .....
Toggle   OFF .....

RAD1
Antenna  Ex .....
Mode     LIS(2,4) .....
SUM/SEP  SUM .....
Toggle   OFF .....

TNR
Antenna  ExEy .....
Mode     A-32 .....
Sweep    ACE .....
  
```