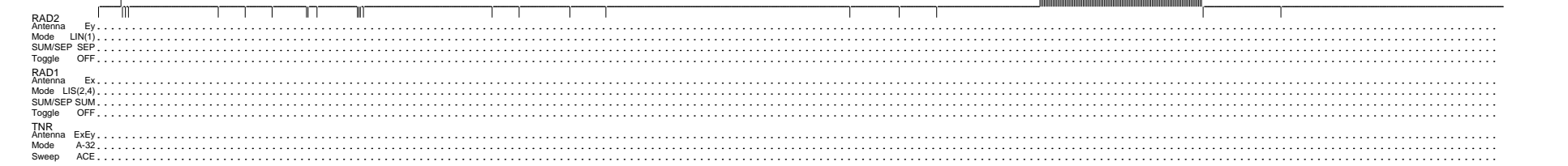
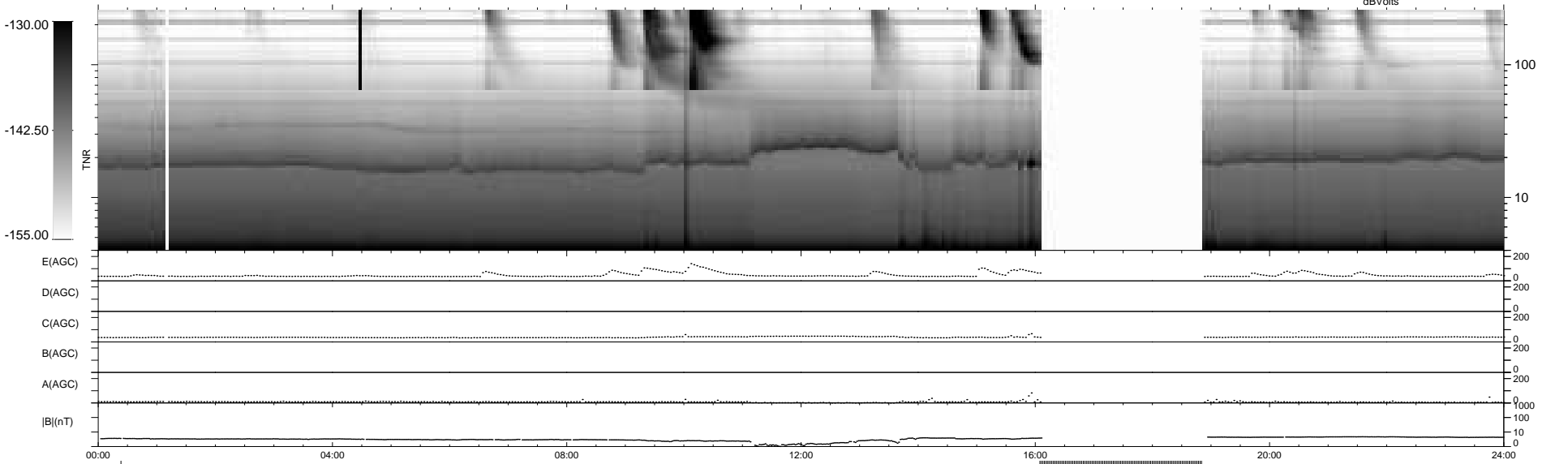
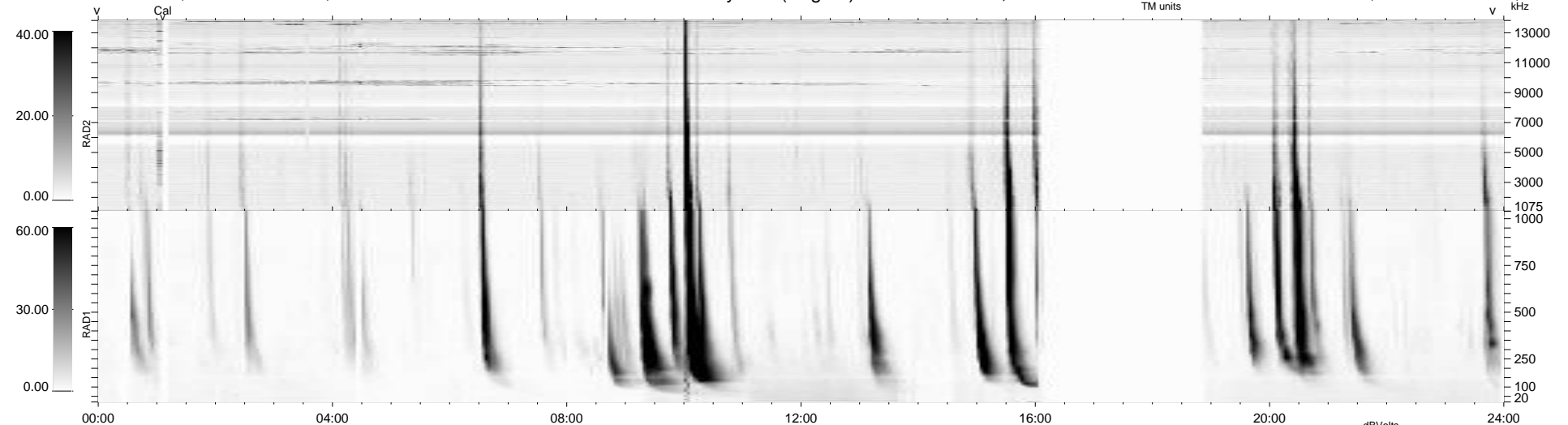


23 bad + 806 good MF/939MF projected (85%) - 110 missing MFs  
 Avg interval = 180 secs  
 Re = 204.37 (202.34, -22.79, -17.50 GSE)

windlib 2.0b LZ version = v01  
 DAILY 2012-07-28 03:16:06  
 Re = 203.75 (202.06, -19.24, -17.79 GSE)

### WIND/WAVES Summary Plot (Page 1) for 26-JUL-2012, DOY = 208



```

RAD2
Antenna Ey .....
Mode LIN(1) .....
SUM/SEP SEP .....
Toggle OFF .....

RAD1
Antenna Ex .....
Mode LIS(2,4) .....
SUM/SEP SUM .....
Toggle OFF .....

TNR
Antenna ExEy .....
Mode A-32 .....
Sweep ACE .....
  
```