

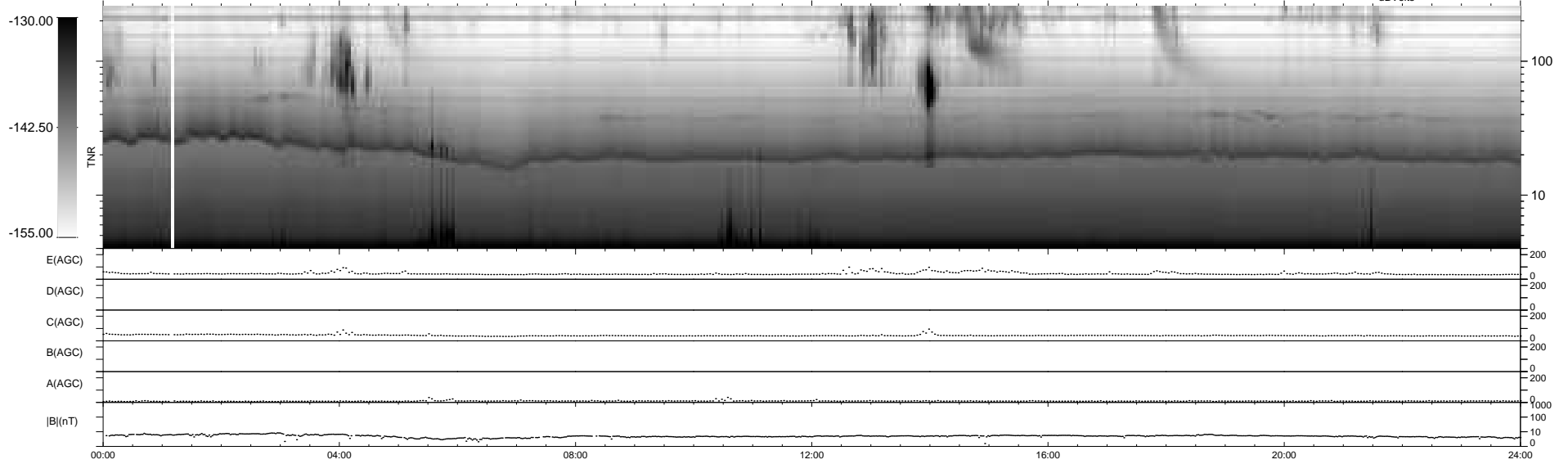
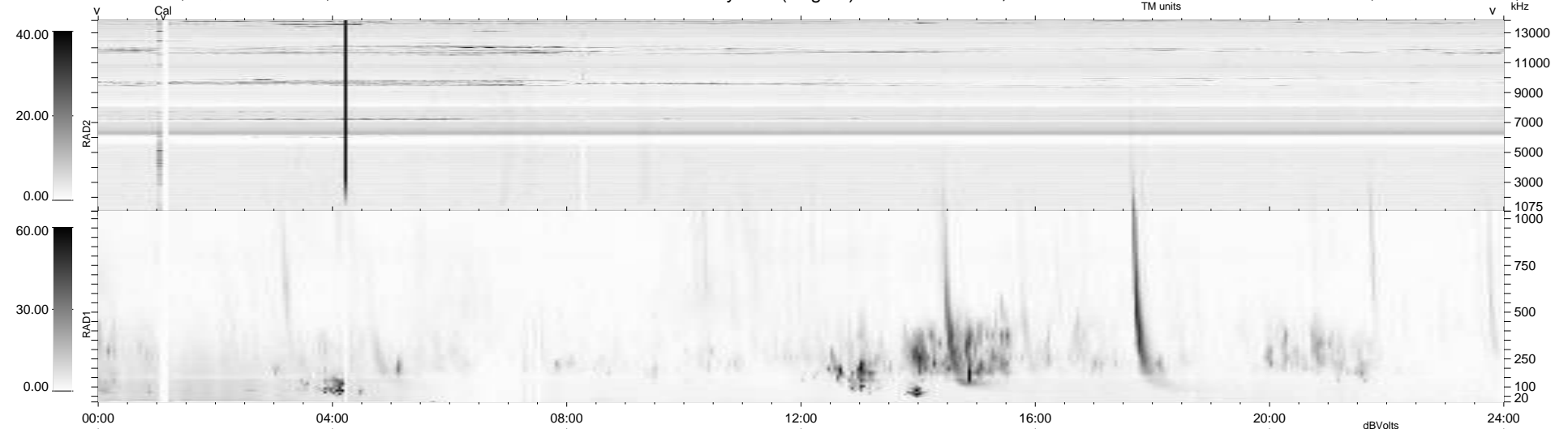
16 bad + 923 good MF/939MF projected (98%) - 0 missing MFs  
Avg interval = 180 secs  
Re = 205.82 (202.93, -29.95, -16.82 GSE)

windlib 2.0b

LZ version = v01

### WIND/WAVES Summary Plot (Page 1) for 24-JUL-2012, DOY = 206

DAILY 2012-07-25 14:16:10  
Re = 205.07 (202.63, -26.40, -17.17 GSE)



RAD2  
Antenna Ey  
Mode LIN(1)  
SUM/SEP SEP  
Toggle OFF

RAD1  
Antenna Ex  
Mode LIS(2,4)  
SUM/SEP SUM  
Toggle OFF

TNR  
Antenna ExEy  
Mode A-32  
Sweep ACE