

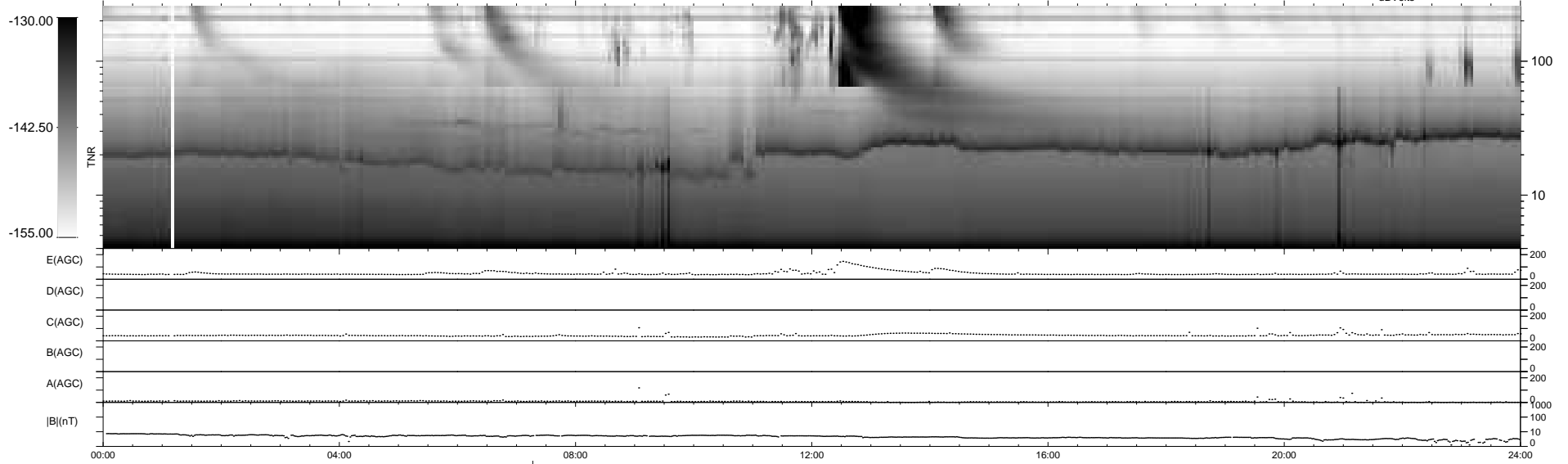
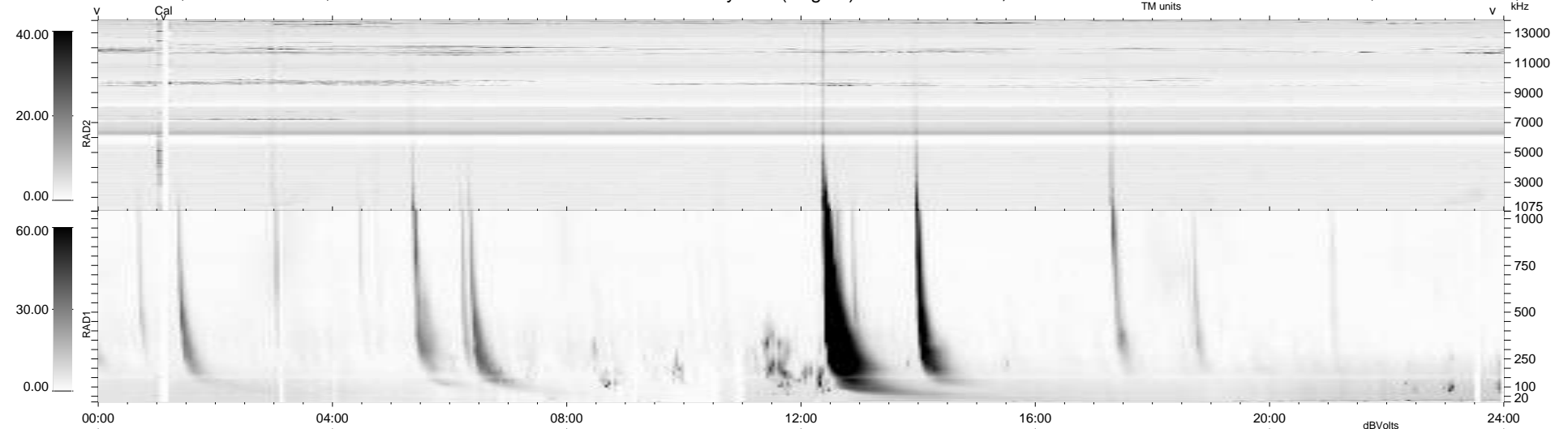
11 bad + 927 good MF/939MF projected (98%) - 1 missing MF  
 Avg interval = 180 secs  
 Re = 207.49 (203.53, -37.04, -16.03 GSE)

windlib 2.0b

LZ version = v01

### WIND/WAVES Summary Plot (Page 1) for 22-JUL-2012, DOY = 204

DAILY 2012-07-23 18:16:07  
 Re = 206.64 (203.23, -33.54, -16.44 GSE)



```

RAD2
Antenna Ey .....
Mode LIN(1) .....
SUM/SEP SEP .....
Toggle OFF .....

RAD1
Antenna Ex .....
Mode LIS(2,4) .....
SUM/SEP SUM .....
Toggle OFF .....

TNR
Antenna ExEy .....
Mode A-32 .....
Sweep ACE .....
  
```