

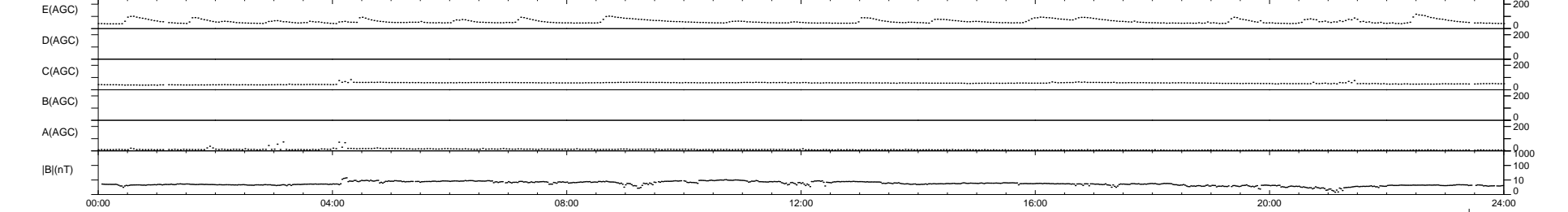
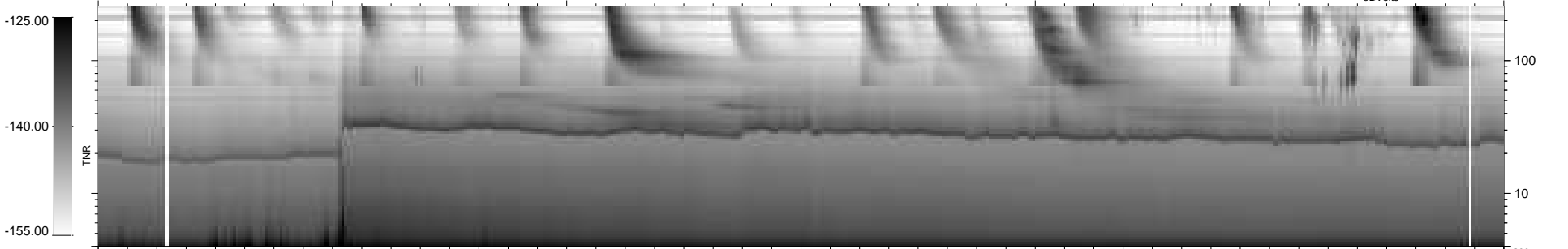
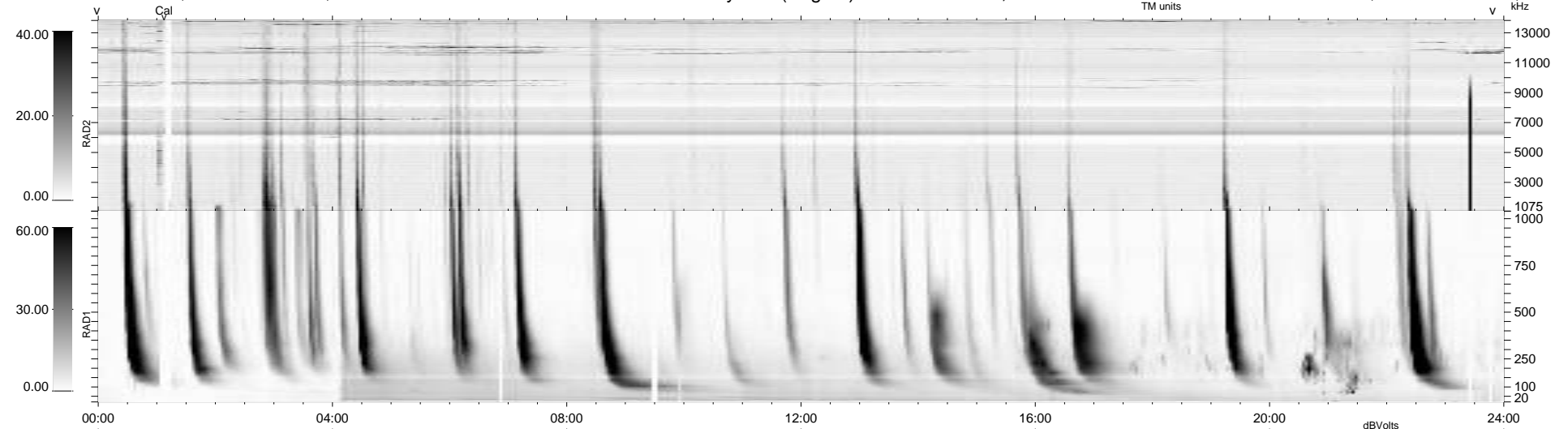
8 bad + 930 good MF/939MF projected (99%) - 1 missing MF
 Avg interval = 180 secs
 Re = 209.32 (204.09, -43.98, -15.12 GSE)

windlib 2.0b

LZ version = v01

WIND/WAVES Summary Plot (Page 1) for 20-JUL-2012, DOY = 202

DAILY 2012-07-21 18:16:06
 Re = 208.40 (203.82, -40.56, -15.59 GSE)



```

RAD2
Antenna Ey .....
Mode LIN(1) .....
SUM/SEP SEP .....
Toggle OFF .....

RAD1
Antenna Ex .....
Mode LIS(2/4) .....
SUM/SEP SUM .....
Toggle OFF .....

TNR
Antenna ExEy .....
Mode A-32 .....
Sweep ACE .....
  
```