

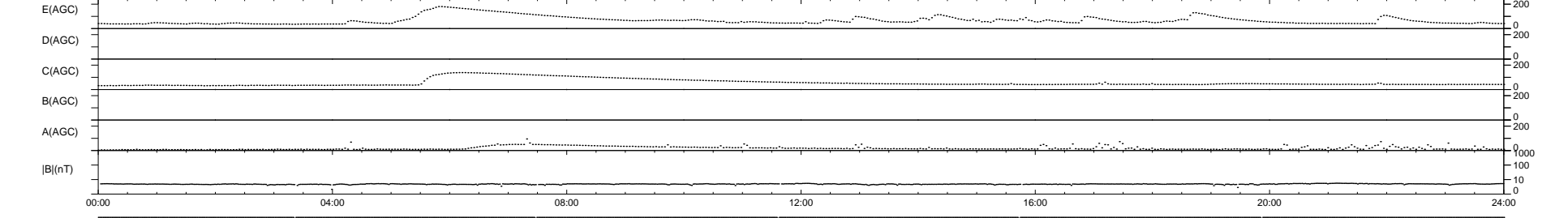
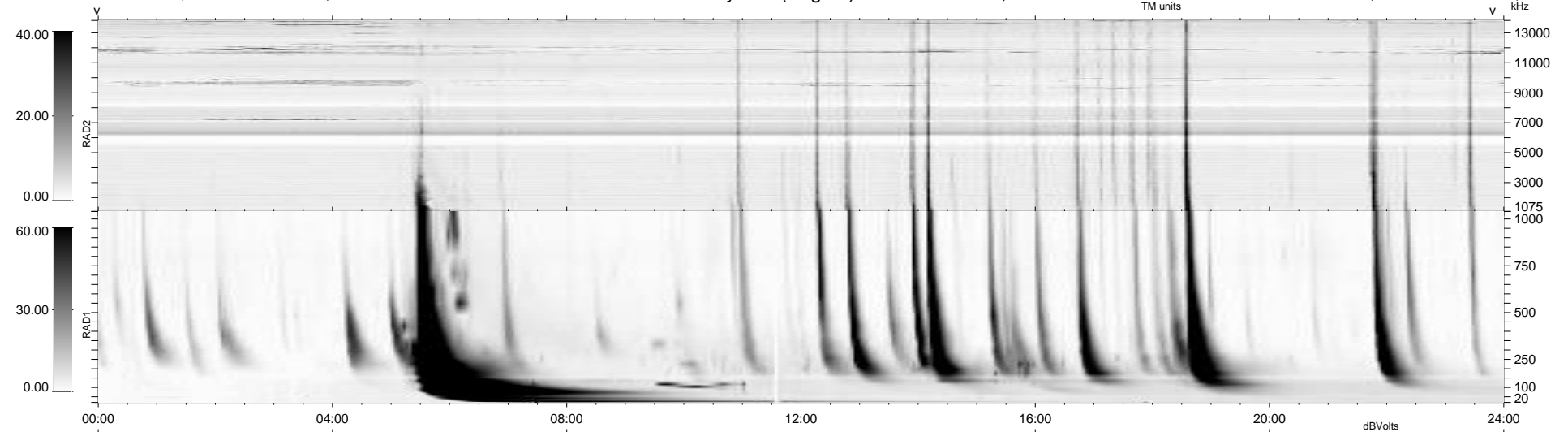
5 bad + 935 good MF/940MF projected (99%) - 0 missing MFs
 Avg interval = 180 secs
 Re = -210.28 (204.36, -47.37, -14.62 GSE)

windlib 2.0b

LZ version = v01

WIND/WAVES Summary Plot (Page 1) for 19-JUL-2012, DOY = 201

DAILY 2012-07-20 17:16:06
 Re = 209.33 (204.09, -44.01, -15.12 GSE)



```

RAD2
Antenna Ey .....
Mode LIN(1) .....
SUM/SEP SEP .....
Toggle OFF .....

RAD1
Antenna Ex .....
Mode LIS(2,4) .....
SUM/SEP SUM .....
Toggle OFF .....

TNR
Antenna ExEy .....
Mode A-32 .....
Sweep ACE .....
  
```