

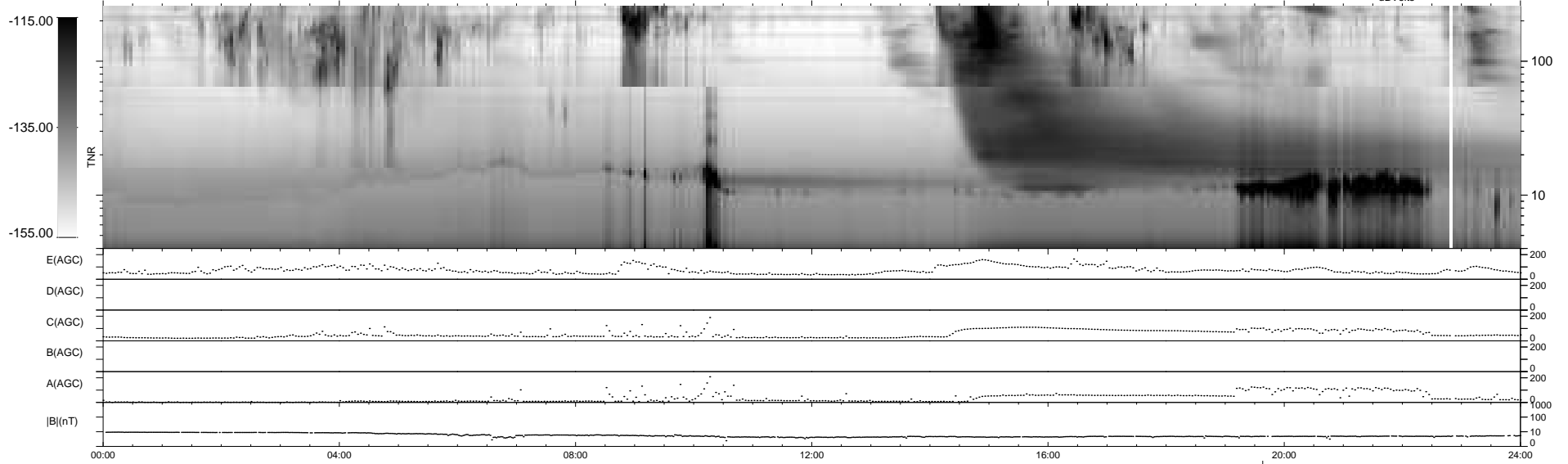
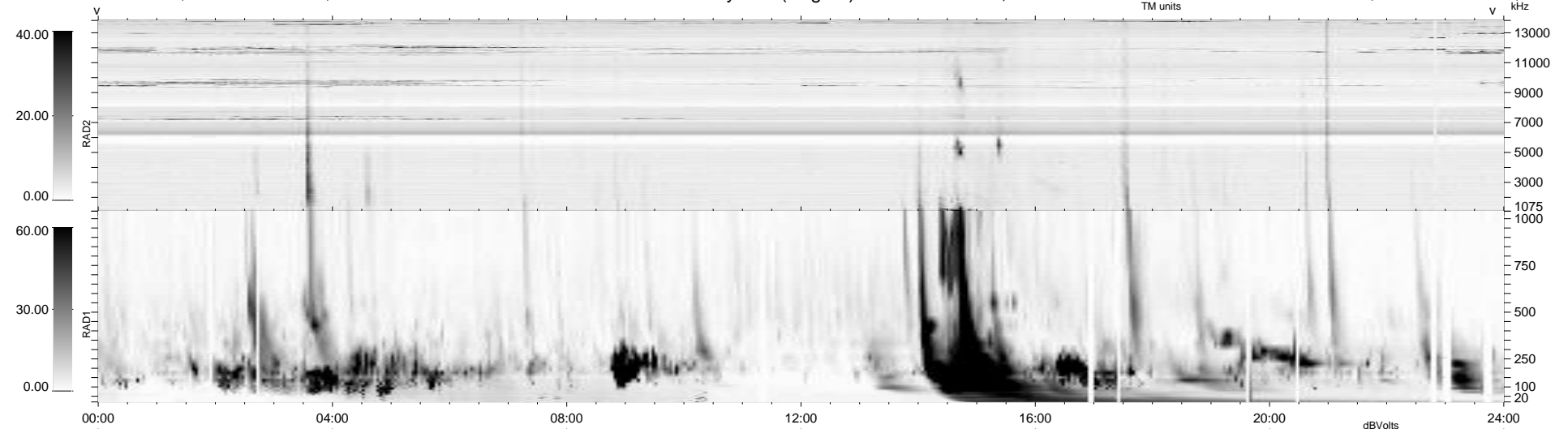
27 bad + 911 good MF/939MF projected (97%) - 1 missing MF
 Avg interval = 180 secs
 Re = -212.27 (204.86, -53.92, -13.56 GSE)

windlib 2.0b

LZ version = v02

WIND/WAVES Summary Plot (Page 1) for 17-JUL-2012, DOY = 199

DAILY 2012-07-20 12:16:07
 Re = 211.28 (204.61, -50.71, -14.10 GSE)



RAD2
 Antenna Ey
 Mode LIN(1)
 SUM/SEP SEP
 Toggle OFF
 RAD1
 Antenna Ex
 Mode LIS(2,4)
 SUM/SEP SUM
 Toggle OFF
 TNR
 Antenna ExEy
 Mode A-32
 Sweep ACE