

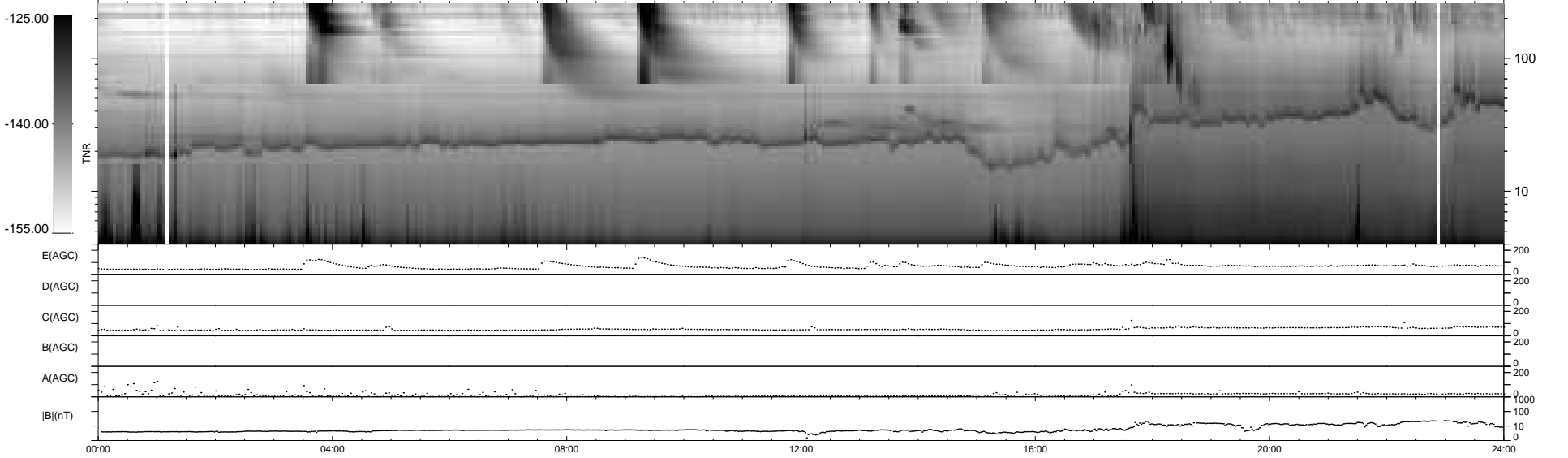
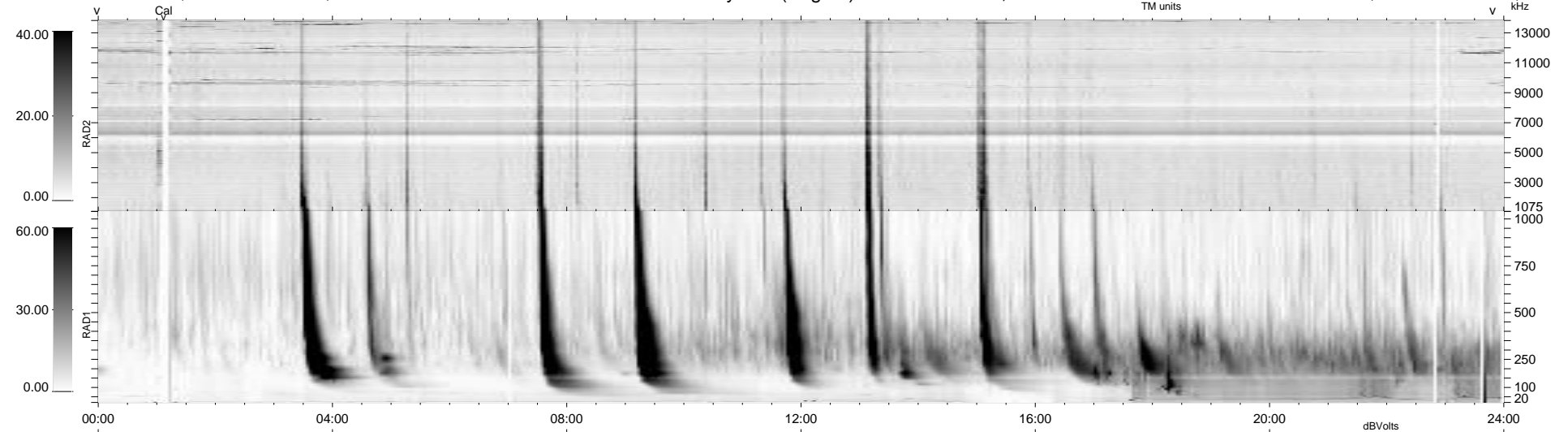
13 bad + 926 good MF/939MF projected (98%) - 0 missing MFs
 Avg interval = 180 secs
 Re = - 215.38 (205.60, -63.06, -11.80 GSE)

windlib 2.0b

LZ version = v01

WIND/WAVES Summary Plot (Page 1) for 14-JUL-2012, DOY = 196

DAILY 2012-07-15 15:16:07
 Re = 214.34 (205.35, -60.14, -12.40 GSE)



RAD2
 Antenna Ey
 Mode LIN(1)
 SUM/SEP SEP
 Toggle OFF

RAD1
 Antenna Ex
 Mode LIS(2,4)
 SUM/SEP SUM
 Toggle OFF

TNR
 Antenna ExEy
 Mode A-32
 Sweep ACE