

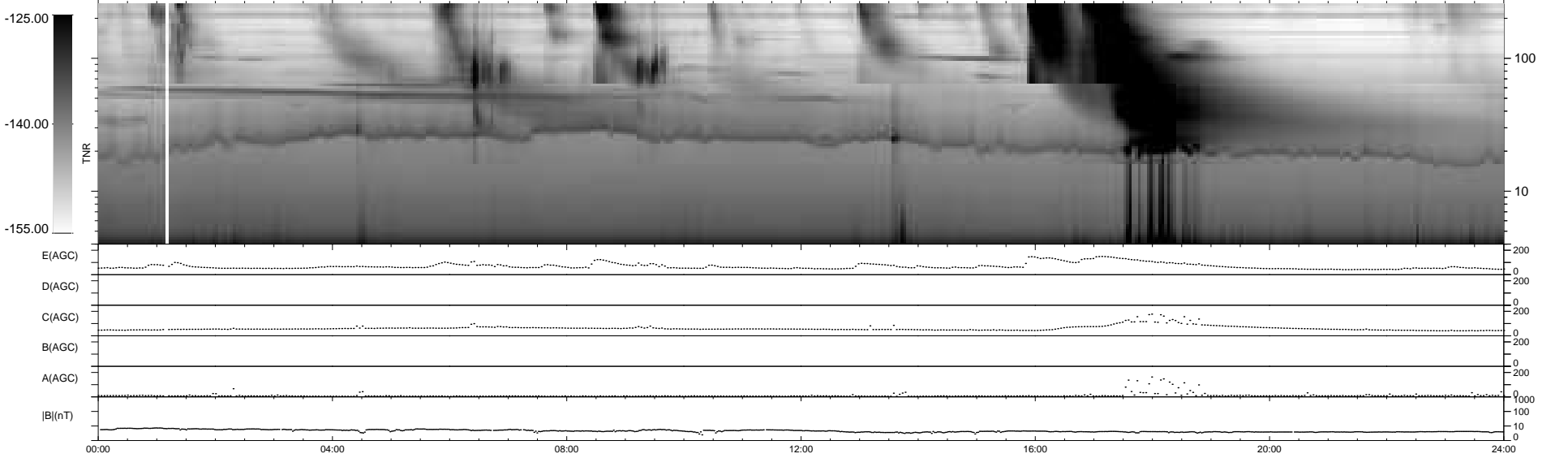
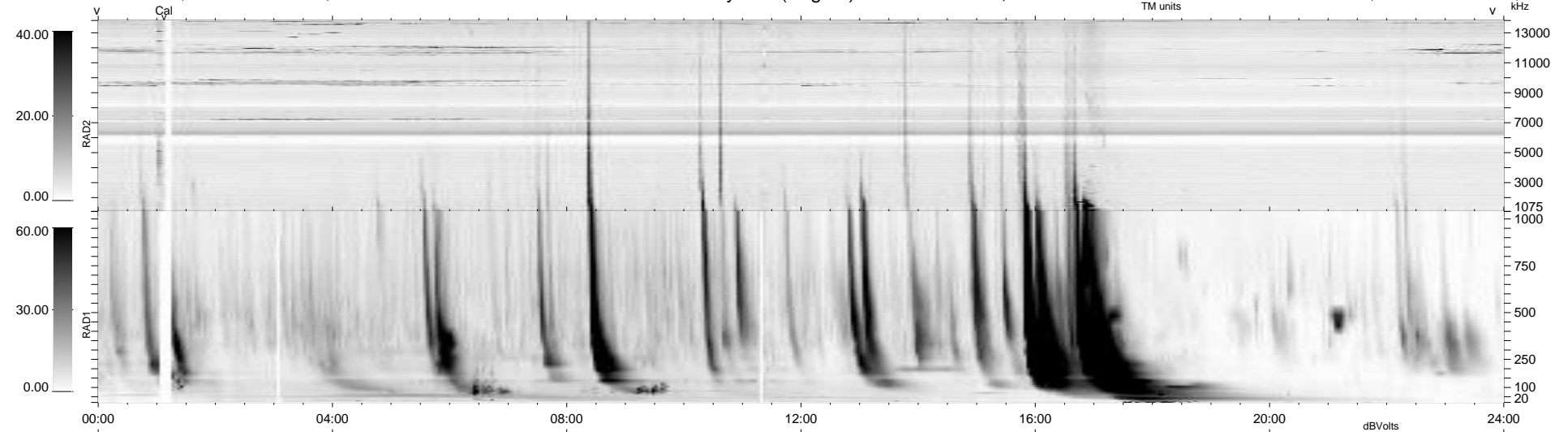
6 bad + 934 good MF/940MF projected (99%) - 0 missing MFs
 Avg interval = 180 secs
 Re = 217.51 (206.14, -68.61, -10.54 GSE)

windlib 2.0b

LZ version = v01

WIND/WAVES Summary Plot (Page 1) for 12-JUL-2012, DOY = 194

DAILY 2012-07-13 11:17:03
 Re = 216.45 (205.86, -65.91, -11.17 GSE)



RAD2
 Antenna Ey
 Mode LIN(1)
 SUM/SEP SEP
 Toggle OFF
 RAD1
 Antenna Ex
 Mode LIS(2,4)
 SUM/SEP SUM
 Toggle OFF
 TNR
 Antenna ExEy
 Mode A-32
 Sweep ACE