

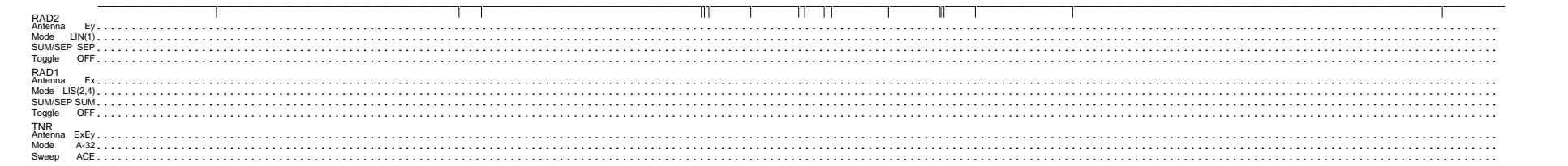
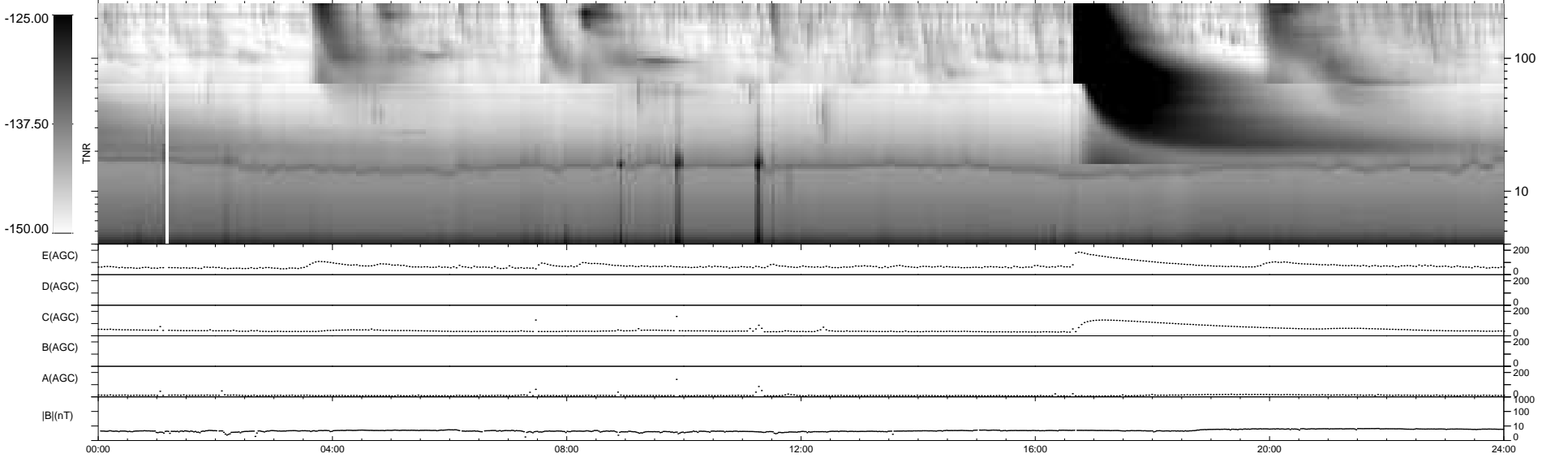
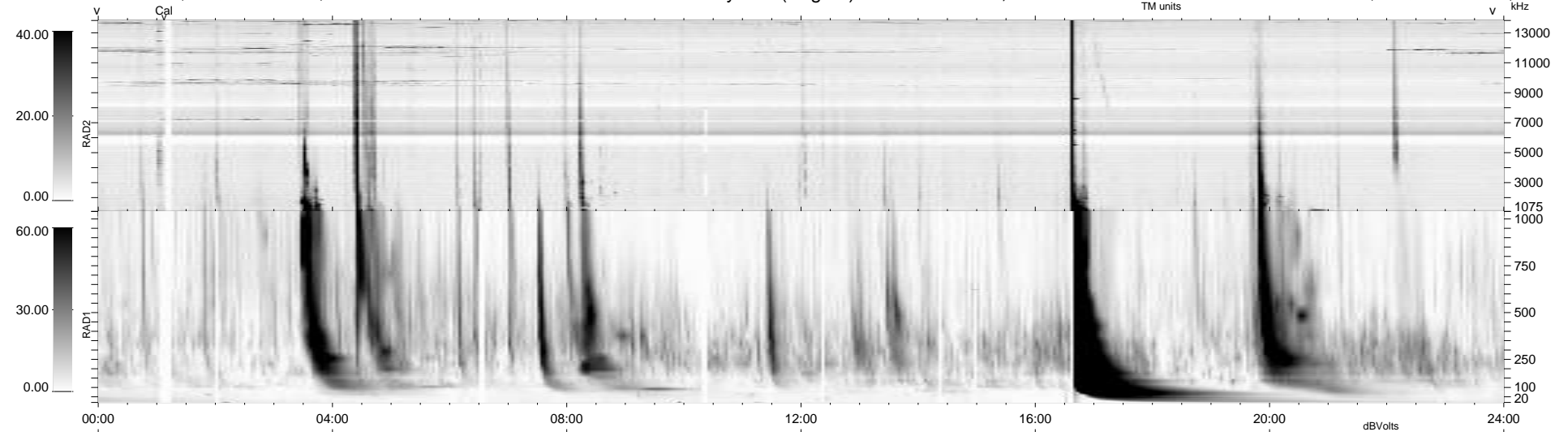
18 bad + 922 good MF/940MF projected (98%) - 0 missing MFs
 Avg interval = 180 secs
 Re = -226.68 (209.74, -85.84, -5.09 GSE)

windlib 2.0b

LZ version = v01

WIND/WAVES Summary Plot (Page 1) for 04-JUL-2012, DOY = 186

DAILY 2012-07-05 18:16:06
 Re = 225.47 (209.10, -84.13, -5.79 GSE)



```

RAD2
Antenna Ey .....
Mode LIN(1) .....
SUM/SEP SEP .....
Toggle OFF .....

RAD1
Antenna Ex .....
Mode LIS(2,4) .....
SUM/SEP SUM .....
Toggle OFF .....

TNR
Antenna ExEy .....
Mode A-32 .....
Sweep ACE .....
  
```