

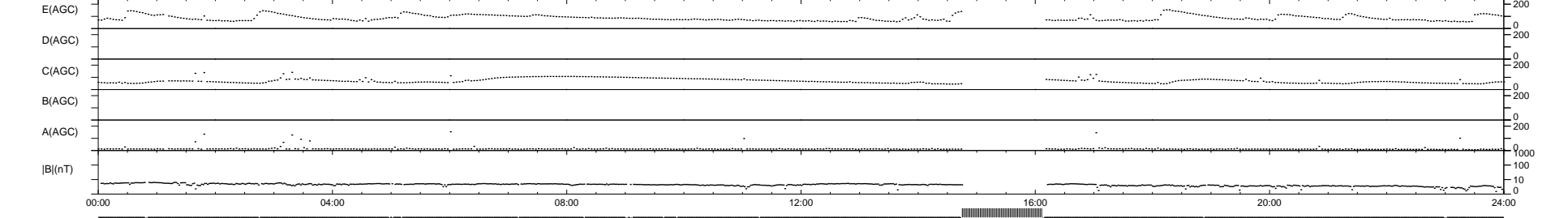
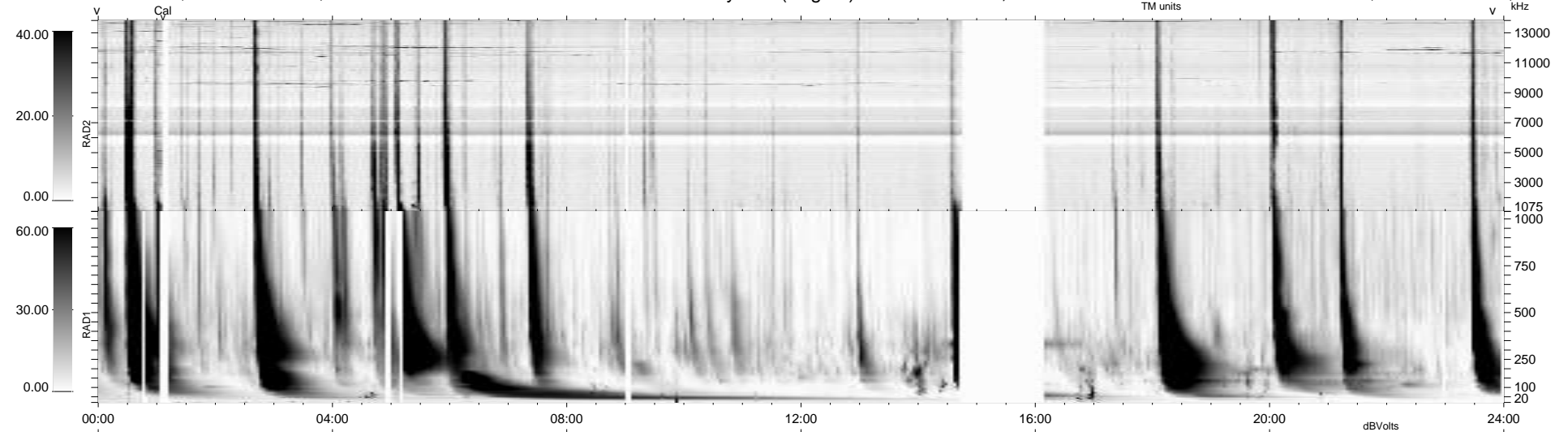
20 bad + 865 good MF/939MF projected (92%) - 54 missing MFs  
 Avg interval = 180 secs  
 Re = 229.22 (211.22, -88.96, -3.68 GSE)

windlib 2.0b

LZ version = v01

### WIND/WAVES Summary Plot (Page 1) for 02-JUL-2012, DOY = 184

DAILY 2012-07-03 18:16:21  
 Re = 227.95 (210.45, -87.46, -4.39 GSE)



RAD2  
 Antenna Ey .....  
 Mode LIN(1) .....  
 SUM/SEP SEP .....  
 Toggle OFF .....  
 RAD1  
 Antenna Ex .....  
 Mode LIS(2,4) .....  
 SUM/SEP SUM .....  
 Toggle OFF .....  
 TNR  
 Antenna ExEy .....  
 Mode A-32 .....  
 Sweep ACE .....