

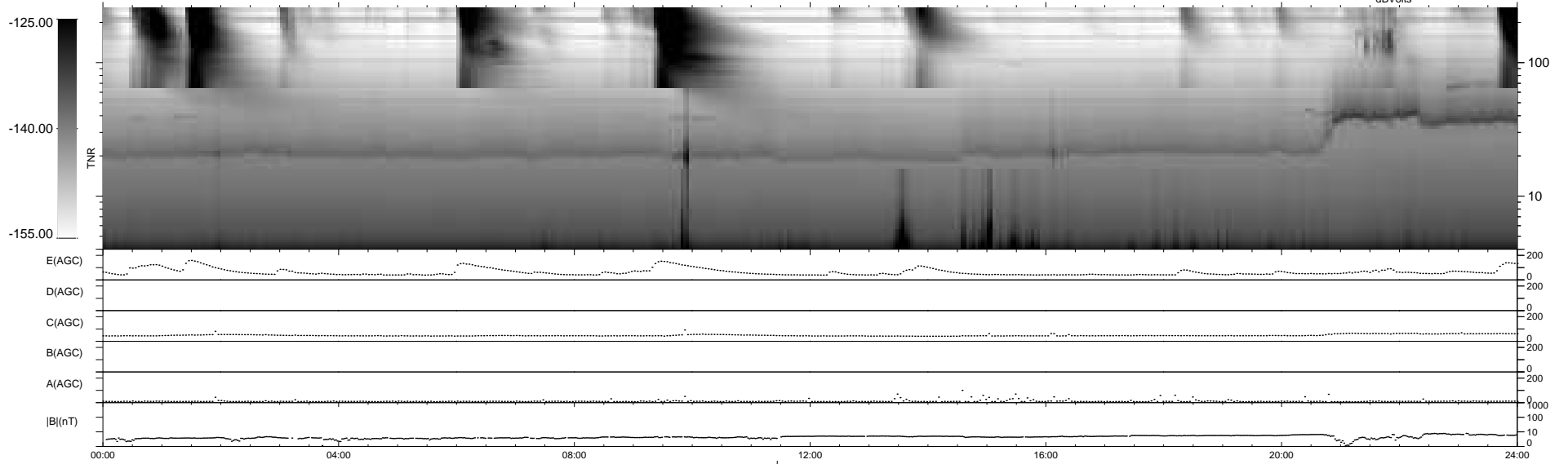
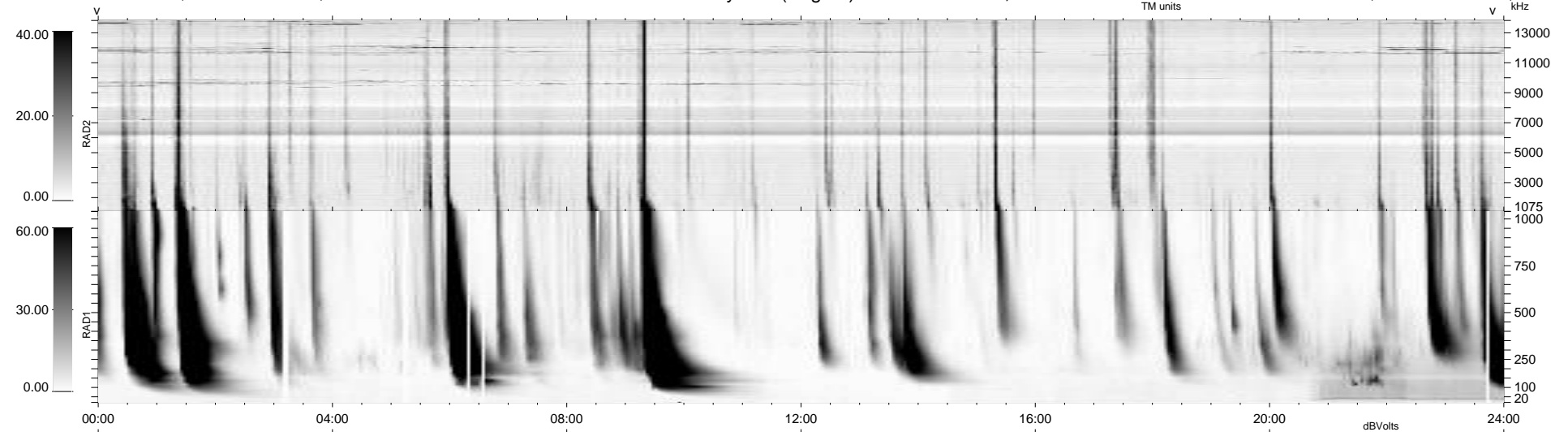
27 bad + 911 good MF/939MF projected (97%) - 1 missing MF
 Avg interval = 180 secs
 Re = 233.23 (213.91, -92.93, -1.52 GSE)

windlib 2.0b

LZ version = v01

WIND/WAVES Summary Plot (Page 1) for 29-JUN-2012, DOY = 181

DAILY 2012-07-03 14:16:09
 Re = 231.88 (212.97, -91.70, -2.24 GSE)



```

RAD2
Antenna  Ey .....
Mode     LIN(1) .....
SUM/SEP  SEP .....
Toggle   OFF .....

RAD1
Antenna  Ex .....
Mode     LIS(2,4) .....
SUM/SEP  SUM .....
Toggle   OFF .....

TNR
Antenna  ExEy .....
Mode     A-32 .....
Sweep    ACE .....
  
```