

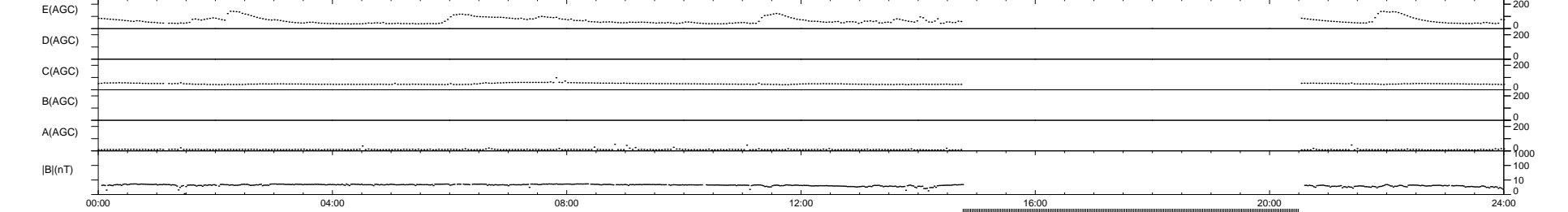
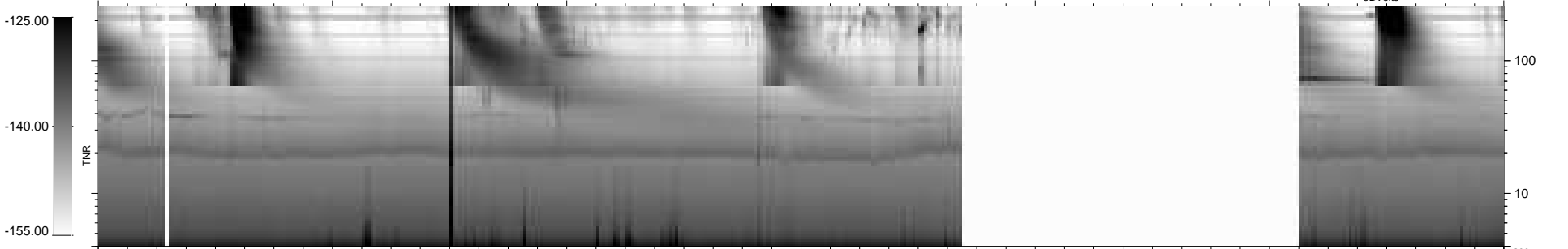
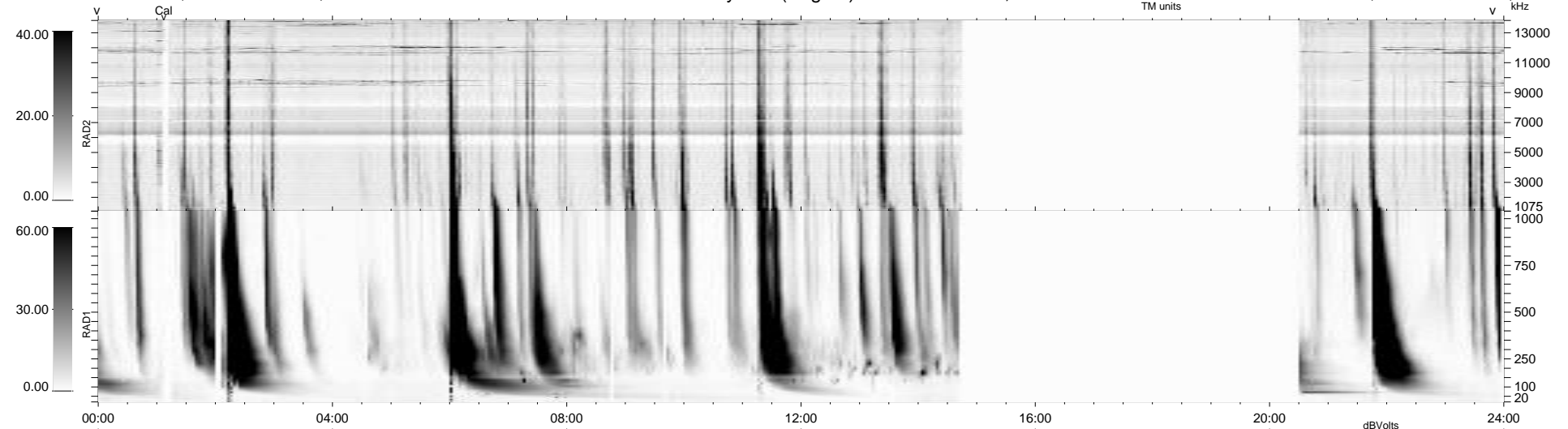
19 bad + 695 good MF/939MF projected (74%) - 225 missing MFs
 Avg interval = 180 secs
 Re = -234.60 (214.90, -94.08, -0.79 GSE)

windlib 2.0b

LZ version = v01

WIND/WAVES Summary Plot (Page 1) for 28-JUN-2012, DOY = 180

DAILY 2012-06-30 02:16:06
 Re = 233.24 (213.92, -92.93, -1.51 GSE)



RAD2
 Antenna Ey
 Mode LIN(1)
 SUM/SEP SEP
 Toggle OFF
 RAD1
 Antenna Ex
 Mode LIS(2,4)
 SUM/SEP SUM
 Toggle OFF
 TNR
 Antenna ExEy
 Mode A-32
 Sweep ACE