

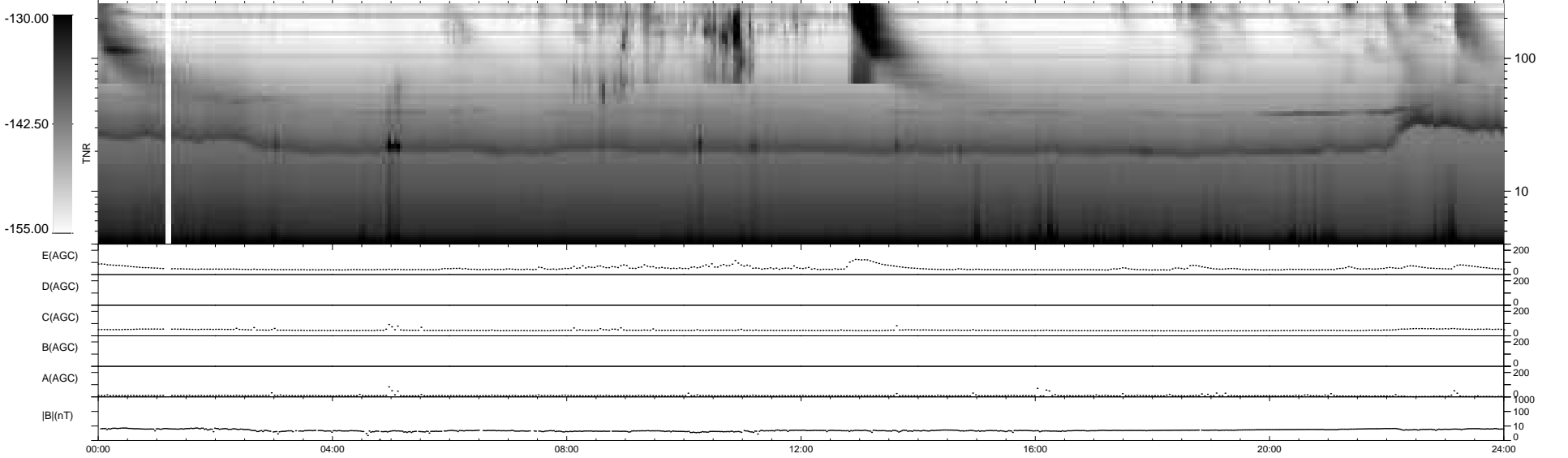
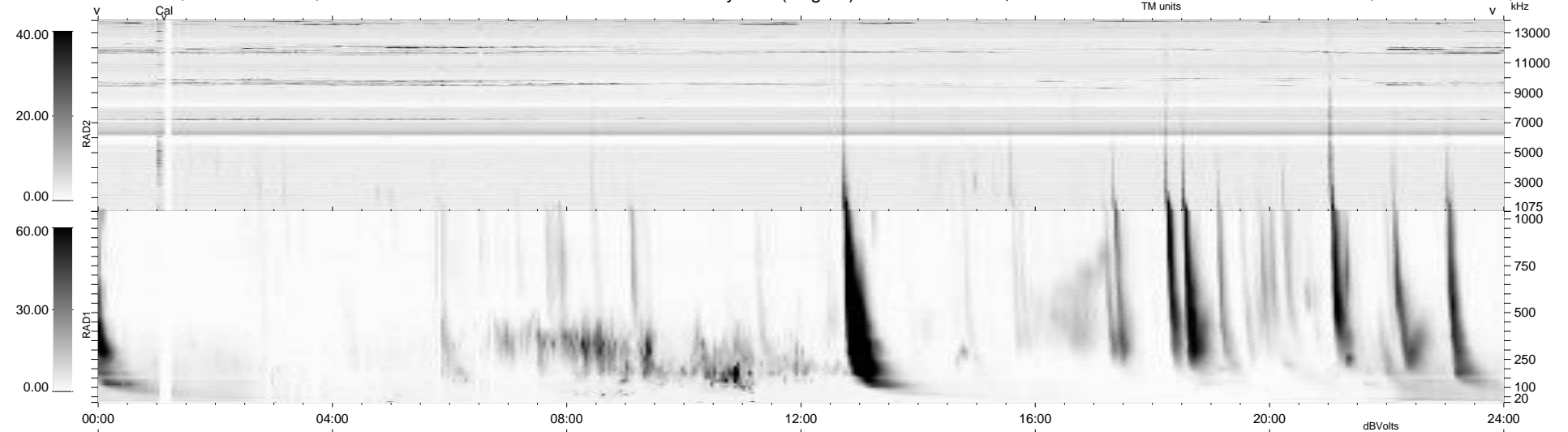
16 bad + 924 good MF/940MF projected (98%) - 0 missing MFs
 Avg interval = 180 secs
 Re = 237.34 (216.99, -96.16, 0.67 GSE)

windlib 2.0b

LZ version = v01

WIND/WAVES Summary Plot (Page 1) for 26-JUN-2012, DOY = 178

DAILY 2012-06-27 17:16:07
 Re = 235.98 (215.94, -95.17, -0.06 GSE)



RAD2	
Antenna	Ey
Mode	LIN(1)
SUM/SEP	SEP
Toggle	OFF
RAD1	
Antenna	Ex
Mode	LIS(2,4)
SUM/SEP	SUM
Toggle	OFF
TNR	
Antenna	ExEy
Mode	A-32
Sweep	ACE