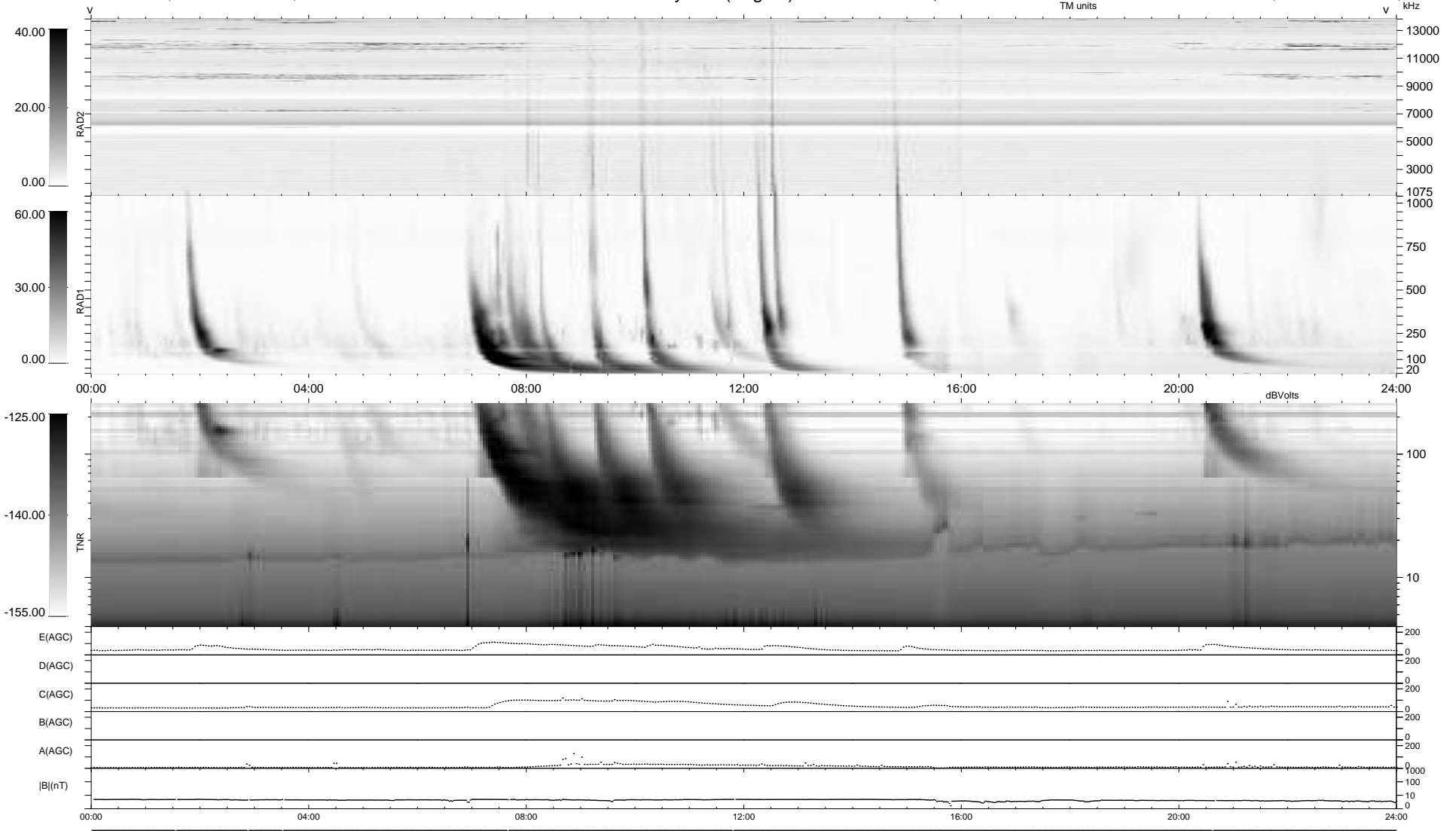


6 bad + 933 good MF/939MF projected (99%) - 0 missing MFs
 Avg interval = 180 secs
 Re = -241.33 (220.24, -98.64, 2.89 GSE)

windlib 2.0b LZ version = v01
 DAILY 2012-06-24 12:16:06
 Re = 240.04 (219.15, -97.91, 2.15 GSE)

WIND/WAVES Summary Plot (Page 1) for 23-JUN-2012, DOY = 175



```

RAD2
Antenna Ey .....
Mode LIN(1) .....
SUM/SEP SEP .....
Toggle OFF .....

RAD1
Antenna Ex .....
Mode LIS(2,4) .....
SUM/SEP SUM .....
Toggle OFF .....

TNR
Antenna ExEy .....
Mode A-32 .....
Sweep ACE .....
  
```