

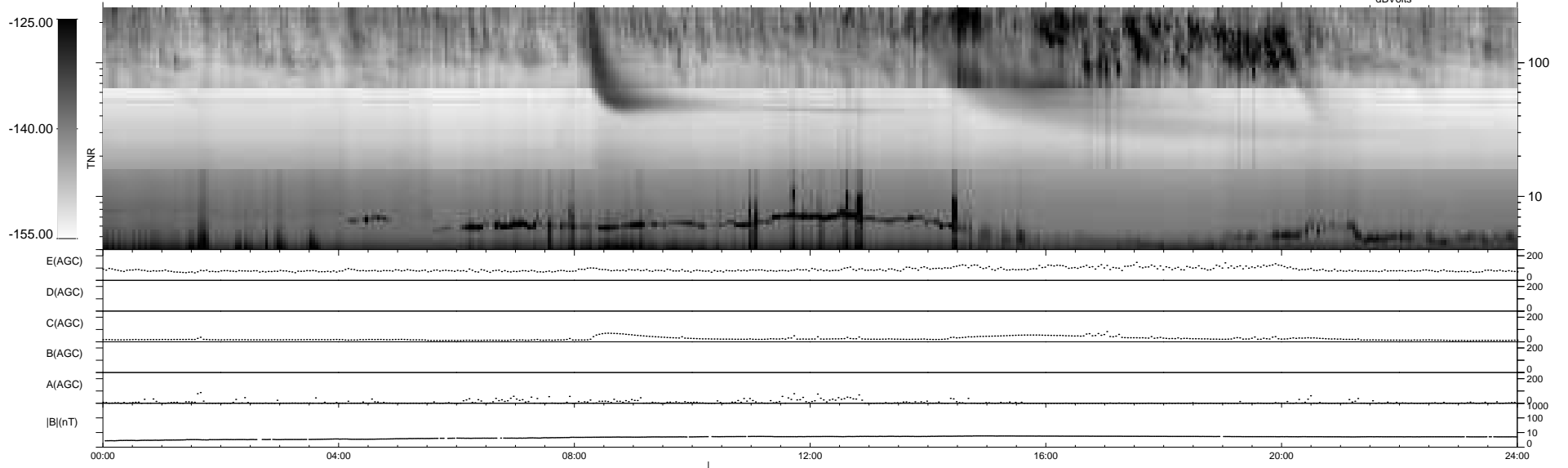
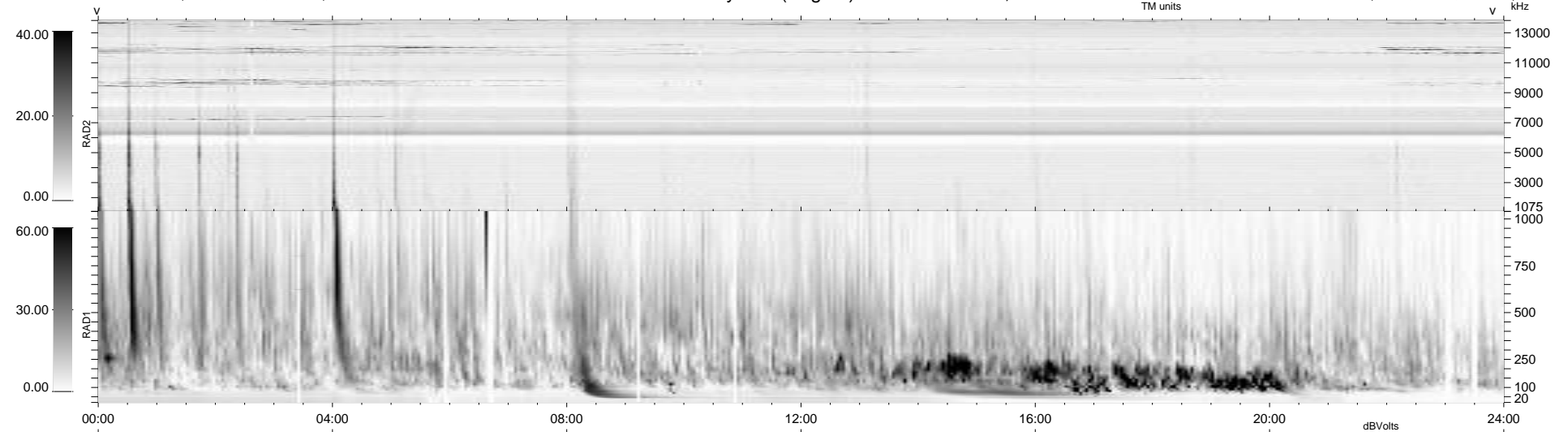
21 bad + 918 good MF/940MF projected (97%) - 1 missing MF  
 Avg interval = 180 secs  
 Re = -246.10 (224.54, -100.56, 5.83 GSE)

windlib 2.0b

LZ version = v01

### WIND/WAVES Summary Plot (Page 1) for 19-JUN-2012, DOY = 171

DAILY 2012-06-21 02:16:07  
 Re = 244.99 (223.49, -100.25, 5.10 GSE)



RAD2  
 Antenna Ey .....  
 Mode LIN(1) .....  
 SUM/SEP SEP .....  
 Toggle OFF .....  
 RAD1  
 Antenna Ex .....  
 Mode LIS(2,4) .....  
 SUM/SEP SUM .....  
 Toggle OFF .....  
 TNR  
 Antenna ExEy .....  
 Mode A-32 .....  
 Sweep ACE .....