

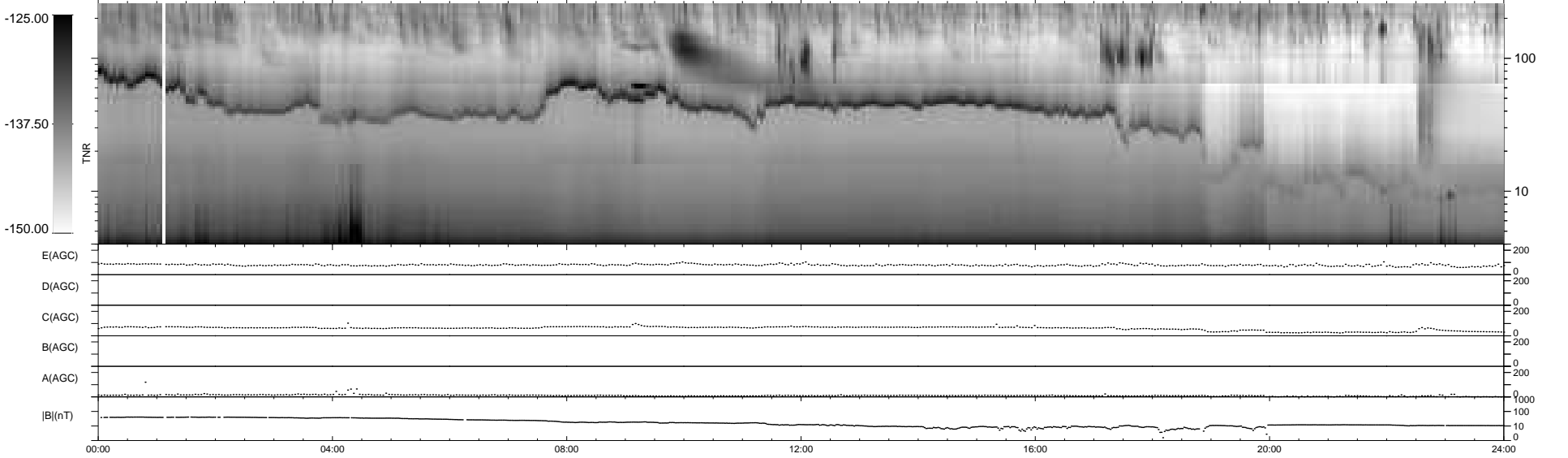
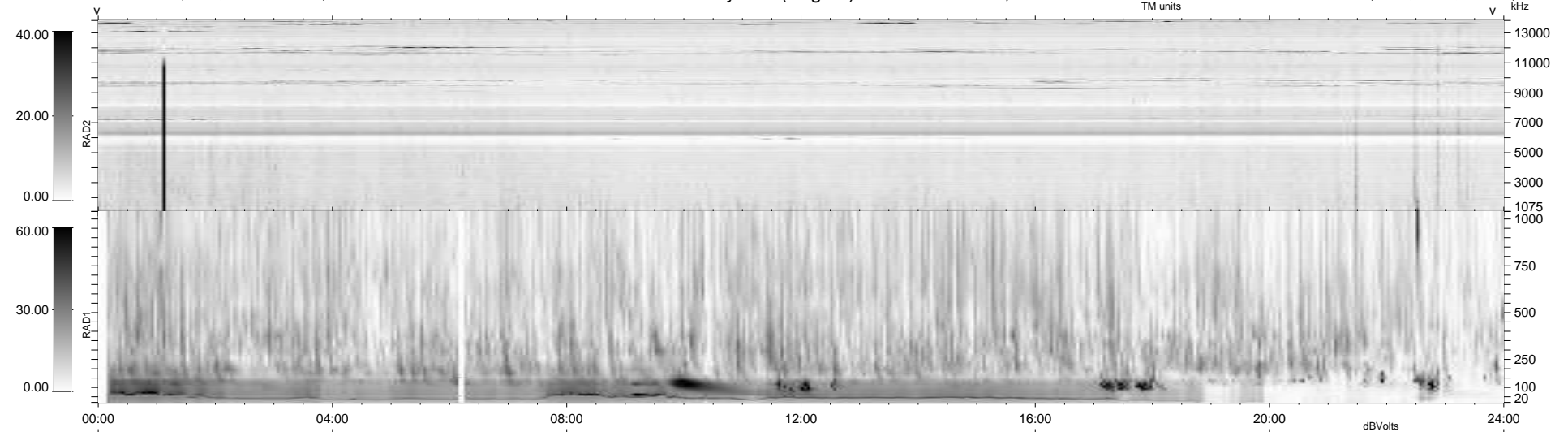
17 bad + 922 good MF/939MF projected (98%) - 0 missing MFs  
Avg interval = 180 secs  
Re = -248.15 (226.63, -100.82, 7.27 GSE)

windlib 2.0b

LZ version = v01

### WIND/WAVES Summary Plot (Page 1) for 17-JUN-2012, DOY = 169

DAILY 2012-06-18 17:16:07  
Re = 247.16 (225.60, -100.75, 6.56 GSE)



RAD2  
Antenna Ey .....  
Mode LIN(1) .....  
SUM/SEP SEP .....  
Toggle OFF .....  
RAD1  
Antenna .....  
Mode .....  
SUM/SEP .....  
Toggle .....  
TNR  
Antenna ExEy .....  
Mode A-32 .....  
Sweep ACE .....