

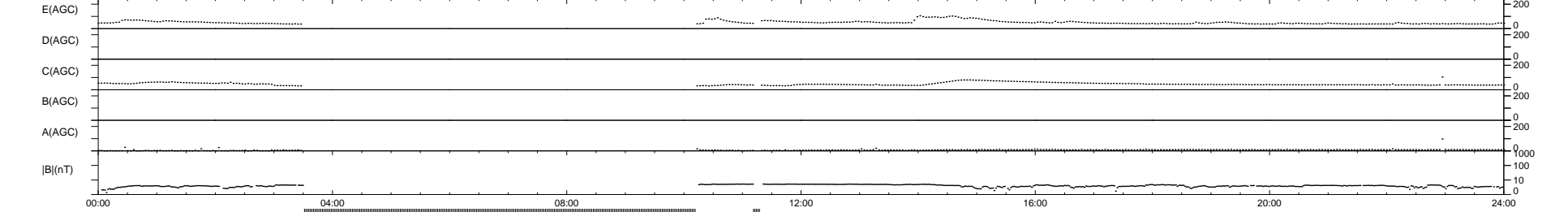
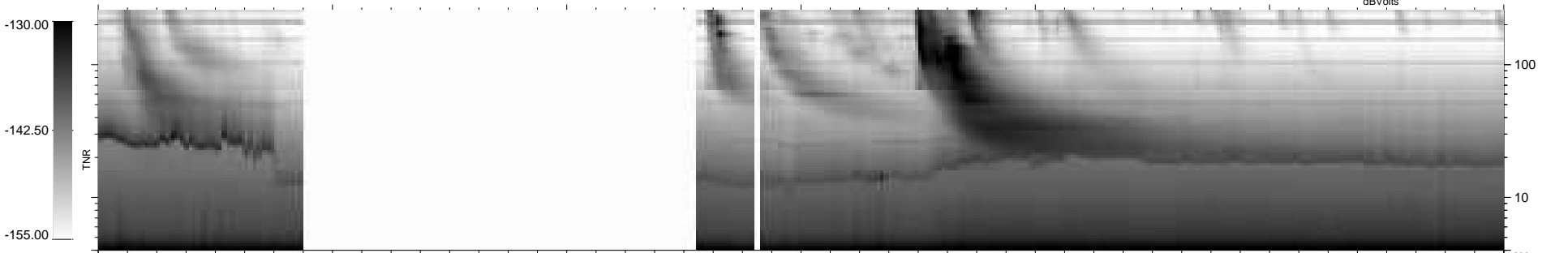
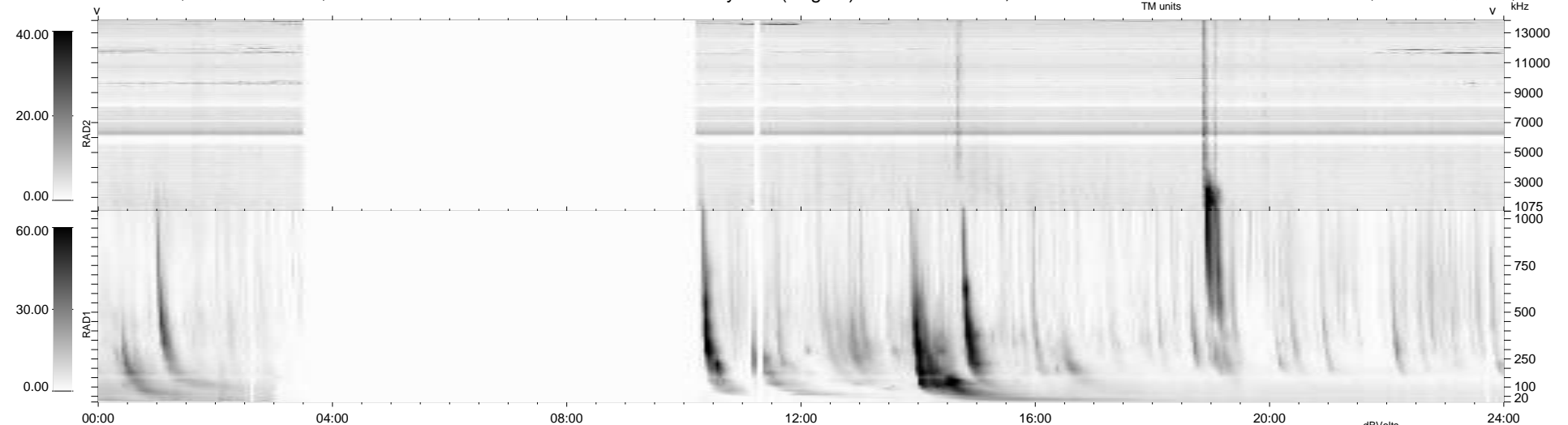
17 bad + 655 good MF/939MF projected (69%) - 267 missing MFs  
 Avg interval = 180 secs  
 Re = 251.53 (230.68, -99.75, 10.06 GSE)

windlib 2.0b

LZ version = v01

### WIND/WAVES Summary Plot (Page 1) for 13-JUN-2012, DOY = 165

DAILY 2012-06-15 00:16:06  
 Re = 250.78 (229.69, -100.22, 9.38 GSE)



```

RAD2
Antenna Ey .....
Mode LIN(1) .....
SUM/SEP SEP .....
Toggle OFF .....

RAD1
Antenna Ex .....
Mode LIS(2,4) .....
SUM/SEP SUM .....
Toggle OFF .....

TNR
Antenna ExEy .....
Mode A-32 .....
Sweep ACE .....
  
```