

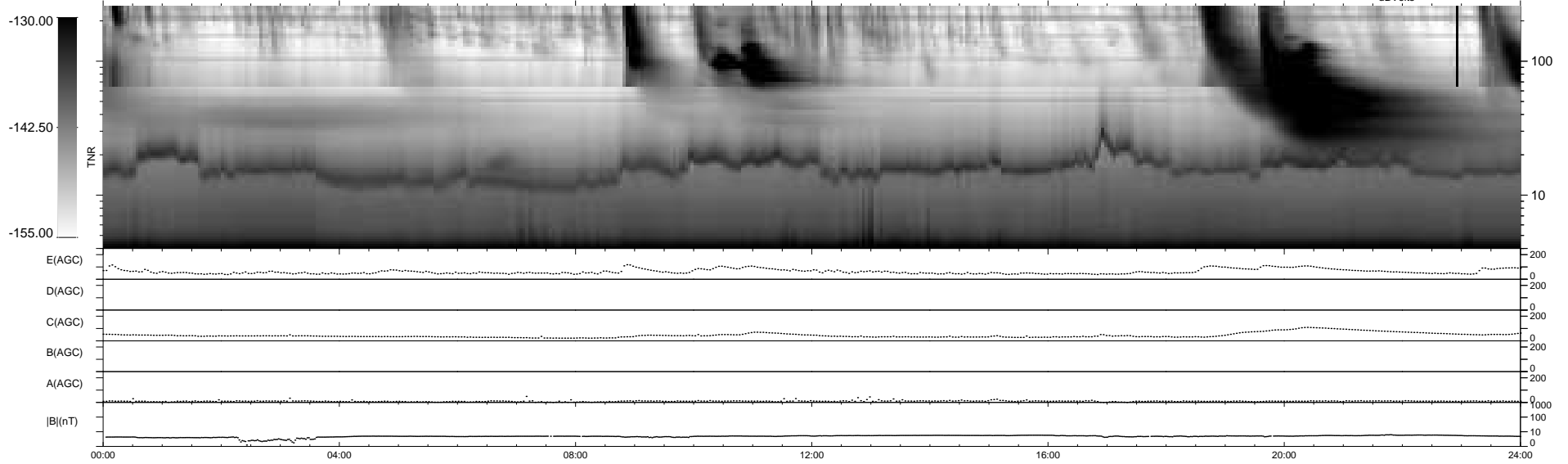
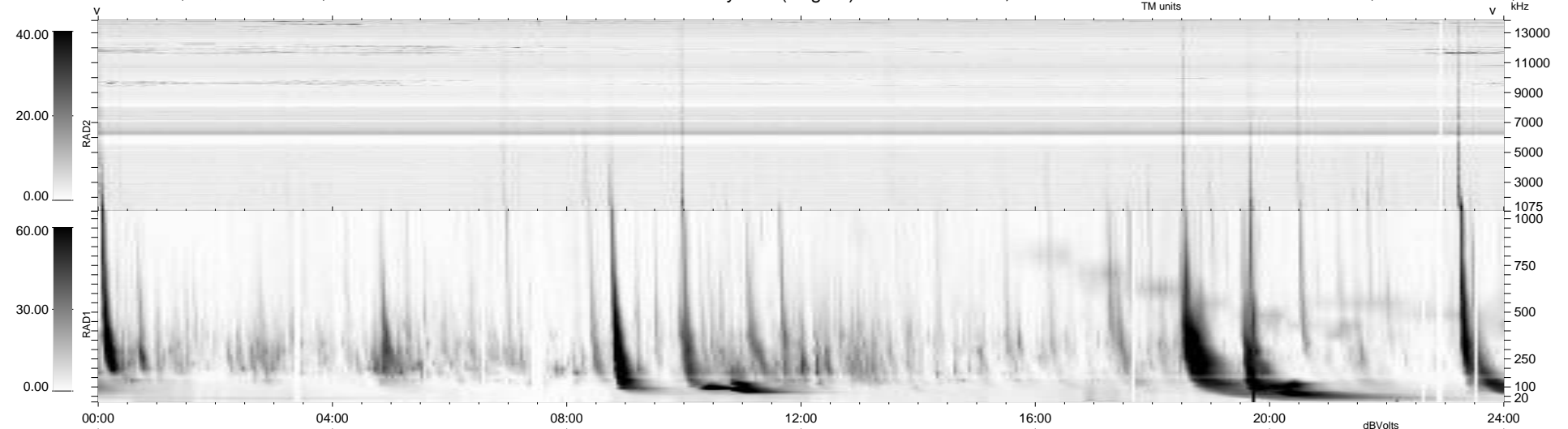
20 bad + 919 good MF/939MF projected (97%) - 0 missing MFs
 Avg interval = 180 secs
 Re = 254.08 (234.72, -96.43, 12.63 GSE)

windlib 2.0b

LZ version = v01

WIND/WAVES Summary Plot (Page 1) for 09-JUN-2012, DOY = 161

DAILY 2012-06-10 19:16:06
 Re = 253.50 (233.71, -97.47, 12.02 GSE)



RAD2
 Antenna Ey
 Mode LIN(1)
 SUM/SEP SEP
 Toggle OFF

RAD1
 Antenna Ex
 Mode LIS(2,4)
 SUM/SEP SUM
 Toggle OFF

TNR
 Antenna ExEy
 Mode A-32
 Sweep ACE